



**PNB**

**20/21**  
DIGITAL  
SEASON

*Dance*

HAPPENS  
EVERYWHERE

**ANNUAL  
REPORT  
2020/2021**

**PNB** PACIFIC  
NORTHWEST  
BALLET



## VISION

Enriching lives in the Pacific Northwest, considered a national treasure, and acclaimed worldwide, PNB epitomizes excellence in the performing arts.

## MISSION

Set new standards for artistic excellence, innovation, and creativity.

Attract the most talented dancers, choreographers, musicians, collaborative artists, staff, and volunteers.

Educate and develop dance artists as well as enthusiasts.

Captivate a devoted, supportive, continually growing, and diverse audience.

Strengthen our financial and organizational foundation.



## Letter from the **ARTISTIC DIRECTOR**



"Hope is not a strategy." So said a wise former CFO at Pacific Northwest Ballet, but we knew she didn't believe it. After all, she worked at PNB. It has absolutely been a strategy of ours, and never more so than last year.

Ellen Walker recalls the moment by the mini-fridge outside of our offices in the late spring of 2020, when I said we need to go digital. And go digital we did, offering 82 videos to somewhat isolated and deprived ballet lovers—82 offerings of hope and fulfillment. Because of our digital offerings, we kept dancers, musicians, designers, choreographers, staff, and crew employed. And what beautiful work emerged from our team. Perhaps more important than employment was the opportunity to continue contributing in meaningful ways and to offer joy to so many in a truly dark time.

The number of people we reached would be impressive in any year, but considering the challenges of the pandemic, they are even more extraordinary: subscribers and donors from 50 states, ticket buyers from 39 countries, hundreds of students trained through Zoom, and a 3-million-dollar Future Fund realized. Our revenue from the digital season produced 2.4 million dollars, with George Balanchine's *The Nutcracker* bringing in a half million. These numbers sustained operations and employment for hundreds.

There are so many people to thank for the past year. Lia Chiarelli and members of our marketing team stepped up to the challenge at every turn. Imagine an artistic director suggesting 82 video projects from an early Serenade to a spectacular School Performance. Each was executed with care and quality. Our Development staff forged close friendships with hundreds of donors and found common bonds in the love of ballet. They also fostered strong corporate and foundation support in our time of need.

A small team including Ellen, Terrie Flaming, and Kiyon Ross turned to unions, designers, choreographers, and other artists to request a multitude of waivers and concessions. Thank you to all who understood the need and agreed to move forward together. The same team—plus several managers and our unflappable COVID supervisor, Lauren Kirchner—rode an ever-changing wave of health mandates and safety protocols to ensure a healthy work environment for all. Faculty and school staff were at the front line, reassuring students and parents that we could keep instruction and inspiration alive in the school. Craig and Jason, our two-person IT department, offered the highest levels of patient instruction while keeping us all connected.

In the hot seat was current CFO David Thorpe, who does believe in hope, but also in careful stewardship and government funding, in the form of Employee Retention Tax Credit, Shuttered Venues Operators Grant, and Payroll Protection Programs. We also had a few angels step forward to help, like City of Seattle and Seattle Center offering rent abatement and free use of McCaw Hall. Our Board of Trustees, Advisory Council, patrons, and friends stood by our side, ensuring the future would be possible. The collective belief in the survival of PNB was lifesaving.

What we saw, from dancers to accountants and choreographers to corporations, was a shared belief in the transformative power of dance. We saw our very existence on the line, and we decided, as a team, to embrace hope and implement a strategy in order to not only survive but thrive. PNB is here and we are looking forward to a bright future filled with hope...and you.

A handwritten signature in black ink that reads "Peter Boal". The signature is fluid and cursive, with the first letters of the first and last names being capitalized and prominent.

Peter Boal, Artistic Director



# ARTISTIC STAFF

Peter Boal, Artistic Director

Kent Stowell and Francia Russell, Founding Artistic Directors

## PRINCIPALS

Leta Biasucci  
Kyle Davis  
Angelica Generosa  
William Lin-Yee  
James Moore  
Elizabeth Murphy  
Seth Orza  
Noelani Pantastico  
Lucien Postlewaite  
Lesley Rausch  
Jerome Tisserand  
Laura Tisserand  
Dylan Wald

## SOLOISTS

Joshua Grant  
Cecilia Iliesiu  
Steven Loch  
Elle Macy  
Leah Merchant  
Price Suddarth  
Ezra Thomson

## CORPS DE BALLET

Madison Rayn Abeo  
Guillaume Basso  
Ryan Cardea  
Nancy Casciano  
Dammiel Cruz  
Mark Cuddihee  
Christopher D'Ariano  
Abby Jayne DeAngelo  
Luther DeMyer  
Angeli Kiana Mamon-Urrea  
Amanda Morgan  
Sarah Pasch  
Miles Pertl  
Christian Poppe  
Juliet Prine  
Clara Ruf Maldonado  
Sarah-Gabrielle Ryan  
Emma Love Suddarth  
Yuki Takahashi  
Leah Terada  
Sarah Villwock  
Genevieve Waldorf

## APPRENTICES

Malena Ani  
Connor Horton  
Noah Martzall

Emil de Cou ,  
*Music Director/Principal Conductor*

Christina Siemens, *Company Pianist*

Josh Archibald-Seiffer,  
*Company Pianist/Conductor*

Otto Neubert, Anne Dabrowski,  
Paul Gibson, *Rehearsal Directors*

Norbert Herriges,  
*Technical Director*

Randall G. Chiarelli,  
*Resident Lighting Designer*

Christine Joly De Lotbiniere,  
*Costume Shop Manager*





# ORCHESTRA

## **VIOLIN 1**

Michael Jinsoo Lim, *Concertmaster*  
Jennifer Caine Provine,  
*Associate Concertmaster*  
Emilie Choi,  
*Assistant Concertmaster*  
Stephen Daniels\*\*  
Tom Dziekonski\*  
Ella Marie Gray\*  
YeSol Im  
Lynn Bartlett Johnson\*\*  
Petro Krysa

## **VIOLIN 2**

Rita Lee, *Principal*  
Raffaela Kalmar, *Assistant Principal*  
Ingrid Fredrickson\*  
William E. Boyd\*  
Anne Cady\*  
Adrianna Hulscher  
Laurie Wells  
Kim Zabelle\*\*

## **VIOLA**

Alexander Grimes, *Principal*  
Betty Agent\*, *Assistant Principal*  
Kayleigh Miller  
Joyce Ramée\*  
Laura Renz  
Eileen Swanson\*

## **CELLO**

Page Smith\*, *Principal*  
Virginia Dziekonski\*,  
*Assistant Principal*  
Meg Brennand\*\*  
Andrea Chandler\*\*  
Charles Jacot  
Brian Wharton

## **BASS**

Todd Larsen\*\*, *Principal*  
Stephen Schermer\*\*,  
*Assistant Principal*  
Maurice Clubb  
Ben Musa\*\*

## **FLUTE**

Evan Pengra Sult\*, *Principal*  
Laura Werner

## **PICCOLO**

Laura Werner

## **OBOE**

Dan Williams, *Principal*  
Tad Margelli\*

## **ENGLISH HORN**

Tad Margelli

## **CLARINET**

Jennifer Nelson\*\*, *Principal*  
Denise Lum

## **BASS CLARINET/E-FLAT**

Denise Lum

## **BASSOON**

Mona S. Butler\*, *Principal*  
Dana Jackson

## **HORN**

Rodger Burnett\*, *Principal*  
Danielle Lemieux  
Richard Reed\*  
Ryan Stewart

## **TRUMPET**

Sarah Viens, *Principal*  
Richard Werner\*

## **TROMBONE**

Mark Williams\*, *Principal*  
Kay D. Nichols\*

## **BASS TROMBONE**

Douglas Nierman\*

## **TUBA**

Ryan Schultz, *Principal*

## **TYMPANI**

Phil Hanson\*, *Principal*

## **PERCUSSION**

Matthew Kocmierski\*, *Principal*  
Gunnar Folsom

## **HARP**

John Carrington, *Principal*

## **KEYBOARD**

Christina Siemens, *Principal*

## **PERSONNEL MANAGER**

Rodger Burnett

## **MUSIC LIBRARIAN**

Mona S. Butler

\*Founding members of PNB Orchestra (1989).

\*\*25 plus years with PNB Orchestra.

The Pacific Northwest Ballet Orchestra is composed of musicians represented by the PNB Orchestra Players Organization.

Steinway & Sons is the official piano of PNB.





"The title of our 2020-2021 season, *Dance Happens Everywhere*, is true; dance happens everywhere. Right now, it's happening in PNB's studios and in any other year this wouldn't be news, but in the midst of a global pandemic, it is truly remarkable. Our dancers are back, working in groups of four, spread out across seven studios. Masks are worn at all times and there's plenty of sanitizing. Dancers only see the other three members of their pod, unless it's through a window or on a Zoom screen. With extensive scheduling and meticulous planning, it seems to be working, which means we can make dance happen everywhere, including on our stage and on your flat screen.

"I wish I could hear the excited chatter coming from the other side of the red velvet curtain, mixed with the cacophony of our orchestra tuning up. And though we can't see you at Doug Fullington's pre-show lecture, or hear you welcoming Emil de Cou to the podium, I'm imagining a similar sense of anticipation as you settle in front of your screen with friends, family, or solo, with dinner or popcorn, in finery or your favorite pajamas. You're about to connect with PNB again, just as you always have. So cheer loudly; we'll hear it. Applaud, laugh, gasp, cry, and savor all that is wonderful about dance. It's something we can all share."

PNB Artistic Director Peter Boal

## Rep 1 Digital stream OCTOBER 15–19, 2020

### ***Dances at a Gathering*** (Excerpt)

Music: Frederic Chopin

Choreography: Jerome Robbins

### ***F O I L*** (Excerpts: *Be Still, Wait*)

Music: Nadia Boulanger and Clara Schumann

Choreography: Eva Stone

### ***One Body*** (PNB Premiere) (Excerpt)

Music: John Kennedy

Choreography: Albert Evans

### ***Swan Lake*** (Excerpts)

Music: Peter Ilyich Tchaikovsky

Choreography: Kent Stowell

### ***Jewels*** (Excerpts from *Rubies, Emeralds* and *Diamonds*)

Music: Gabriel Fauré, Igor Stravinsky, and Peter Ilyich Tchaikovsky

Choreography: George Balanchine © The George Balanchine Trust

### ***Mopey***

Music: C.P.E. Bach and The Cramps

Choreography: Marco Goecke

### ***The Calling***

Music: Anonymous

Choreography: Jessica Lang

### ***The Trees The Trees*** (Excerpt)

Music: Kyle Vegter

Choreography: Robyn Mineko Williams

### ***Red Angels*** (Excerpt)

Music: Richard Einhorn

Choreography: Ulysses Dove

Pacific Northwest Ballet's 2020-2021 digital season was proudly sponsored by Browne Family Vineyards, ArtsFund, Microsoft, and Peter & Peggy Horvitz. Special thanks also to 4Culture, National Endowment for the Arts, The Shubert Foundation, City of Seattle Office of Arts & Culture, and The Wallace Foundation.

The works of George Balanchine performed by Pacific Northwest Ballet are made possible in part by The Louise Nadeau Endowed Fund.

# Letter from the EXECUTIVE DIRECTOR



Not long after the start of Covid shutdowns, I met with a King County Public Health official who advised us to get used to living and working in a pandemic world. Peter rightfully and decisively had just moved us to an all-digital operation, but we had only recently abandoned plans for a fall season, a *Nutcracker* run, PNB school classes in studios, and in-person gatherings. That public health conversation, like so many of the past 18 months, was sobering. But as I write this in September 2021, we've turned the corner on the most limiting aspects of Covid19 restrictions. We're back in the theatre, classes and *Nutcracker* rehearsals are happening in the studios once again. We've just put in another order for rapid antigen tests, N95 masks, and disinfectant for our floors and ballet barres. It seems we are indeed used to living and working in a pandemic world.

Perspective, however, is everything. During our 2021-2022 opening weekend at McCaw Hall we heard – despite vaccine card checks, mandatory mask requirements, checkerboard seating, and heavy restrictions backstage – nothing but joy, gratitude, and a nearly miraculous sense of something lost being found again. Local journalist Melody Datz Hansen captured it beautifully: “We were all back in the theatre, the place where we remember what we love, why we love it, and what we are fighting for.”

In this space of a new beginning, we also recognize the importance of pausing to ask ourselves what we've learned over the past 18 months: What do we want to carry forward? What past practices no longer serve us or our community? What do we want to reinvent or invent anew?

We know the work we've done to create a more inclusive PNB feels right in every way. There is more authenticity in our organization, more courageous conversations, more personal agency by colleagues who may have stayed silent in the past. We took on an ambitious learning agenda over the 2020-2021 season, including a plan to include every PNB administrator, artist,

member of our production team, orchestra, faculty, and our professional division students in a curriculum around the docu-series *Race: The Power of an Illusion*. More than 300 PNB employees took part in these all-day facilitated trainings, designed by consultant Steve Sneed and our Inclusion, Diversity, Equity, and Accessibility (I.D.E.A.) committee led by Kiyon Ross and Naomi Glass as well as a dedicated training subcommittee. From this foundation of understanding the social, historical, and biological constructs of race in America, we can better understand how to dismantle any existing barriers to participation at PNB and create the greatest measure of belonging in this community. Additional I.D.E.A. subcommittees dedicated to community engagement, governance, committee engagement, and communications ensure continued centering of this vitally important work.

It is no exaggeration to say that every day of the last season brought us a new hill to climb. We also work within a sector of organizations facing the same existential perils as PNB. There has never been a more important time to link arms with other arts and cultural leaders, and demonstrate our contributions as a business sector: the 3 to 1 multiplier effect on spending in neighborhoods that include arts and culture organizations; the hundreds of thousands of people employed by organizations fueling the creative economy, and the contribution our sector makes to our state's GDP – an impressive 8.4%.

We've all now experienced a region without the dynamic element of live performance. It is less interesting for sure, but the economic repercussions of this loss are keenly felt across our entire state, and underscore the fact that arts and culture is both nice *and* necessary. The CARES Act and American Rescue Plan relief programs have saved us. They've been a vital lifeline to PNB and to our large, interdependent sector. In advocating for these funds we've also had the opportunity to affirm the importance of the cultural community. As we walk out of the pandemic, I'm hopeful that we'll occupy an important place in the story of recovery across our city, King County, and our state.

We are so very grateful for the myriad ways this community has shown up for PNB over the past year and a half. In a time defined by separation and a falling away of all we took for granted, you have been present for the ballet in every possible way. From all of us, our heartfelt thanks – and welcome back.

A handwritten signature in black ink, appearing to read 'Ellen Walker', with a long, sweeping flourish extending to the right.

Ellen Walker, Executive Director



# INCLUSION, DIVERSITY, EQUITY, AND ACCESSIBILITY AT PNB



Pacific Northwest Ballet recognizes the historical and present inequities in ballet and is committed to shifting the culture in our Company and art form through meaningful action and reflection. We strive to be an arts organization that reflects our community and is relevant, accessible, and welcoming to everyone.

Throughout PNB's history, we have understood the importance of how classical arts organizations show up in, and for, their communities. Since 2014, PNB has moved this commitment front and center, dedicating more time and resources to ensure a more inclusive, diverse, equitable, and accessible PNB and ballet field.

The Pacific Northwest Ballet (PNB) Inclusion, Diversity, Equity, & Accessibility (I.D.E.A.) Committee is a cross-functional committee that values equity, diversity, inclusion, and accessibility as guiding organizational principles. We seek to reflect and embrace our community and to provide a welcoming and inclusive environment in which artists, audiences, students, staff and volunteers of all backgrounds learn, collaborate, and participate for the benefit of all. The work of the I.D.E.A. Committee directly supports PNB's mission to inspire, engage, and educate through dance. Diversity and diverse perspectives advance PNB's ability to achieve new standards of excellence in every aspect of its organization. PNB seeks to build a fully-inclusive, anti-racist, multicultural organization, creating space for shifting perspectives that reflect our industry's continual evolution.

The I.D.E.A. Committee is dedicated to:

- Building PNB artist, board, faculty, staff, student, and volunteer awareness about issues relating to race and other forms of diversity.
- Promoting learning opportunities for all artists, board, faculty, staff, and students around equity, race and other forms of diversity, and inclusion.
- Integrating equity learning and work throughout all facets of the organization.
- Filtering PNB's programs, practices, and policies through a lens that is sensitive to issues around equity, race and other forms of diversity, accessibility, and inclusion.
- Developing and implementing an annual I.D.E.A. Action Plan.
- Centering underrepresented perspectives across the organization through community collaboration and professional consultation.
- Cultivating authentic relationships and engagement with under-invited communities in our work outside of PNB.
- Inviting feedback relating to I.D.E.A. work from artists, board, faculty, staff, student and families, volunteers, audiences, and community partners.
- Ensuring our artistic output is reflective of our community.
- Maintaining public transparency by I.D.E.A. Committee updates and statements to our website and annual report.



# STAFF

## ARTISTIC STAFF

Peter Boal, Artistic Director  
Anne Dabrowski, Otto Neubert\*, Giovanni Villalobos, Ballet Masters  
Emil de Cou, Music Director/Principal Conductor  
Josh Archibald-Seiffer, Conductor/Company Pianist  
Rodger Burnett\*, Orchestra Personnel Manager  
Christina Siemens, Principal Company Pianist  
Stephen Barnes\*, Jeff Junkinsmith, Emi Oguri, Megan Phillips, Natasha Pinelis, Katja Rubin, Shelley Sutton-Bolton, Don Vollema, Annastasia Workman, Company Class Pianists  
Mona Butler\*, Orchestra Librarian  
Jon Blake, Birgit Hansen, Librarians  
Sheila Dietrich\*, Archivist  
Michele Curtis, Family Matinee Ballet Master  
Lauren Kirchner, Student Cast & Parent Volunteer Coordinator

## PRODUCTION

Norbert Herriges, Technical Director  
Reed Nakayama, Resident Lighting Design Coordinator  
Sandra Barrack, Production Stage Manager  
Alexandria Wommack, Stage Manager  
Leigh’Ann Andrews, Stage Manager (Ghost Variations)  
Greg Davis, Master Carpenter  
Jeffrey Stebbins\*, Master of Properties  
Michael Grogan, Master Electrician  
Alan Hiskey\*, Flyman  
Cole Erin Guinn, Assistant Carpenter  
Jay Gosselin\*, Kevin Krist\*, Properties Assistants  
Jonathan Hackett\*, Production Electrician  
Jan Harvey-Smith\*, Master Scenic Artist  
Scott Bennet, Jennifer Law, Kelly Staton, Scenic Artists  
Dominic Iacono, Lighting Technician  
Toby Basiliko, Sound  
Jim Austin\*, Kate Takata, Followspot Operators  
Jack Taylor, Lindsay Thomas, Videographers  
Noel Pederson, Lindsay Thomas, Video Editing

## COSTUME SHOP

Christine Joly De Lotbiniere, Costume Shop Manager  
Madeleine DeGracia, Wardrobe Manager  
Pat Stovall, Wardrobe Assistant / Lead Dresser  
Sherri J. Thompson\*, Wardrobe Assistant  
Meleta Buckstaff, Assistant Costume Shop Manager  
Luna Pham, Mark Zappone, Drapers  
Pauline Smith\*, First Hand  
Rob Newton, Costume Technician  
Wendy Oberlin, Dyer/Painter/Crafts  
Jenn Oaster, Lead Maintenance  
Kate Hartman, Carrie Steficek, Dressers

## EXECUTIVE OFFICE

Ellen Walker, Executive Director  
Terrie Flaming, Director of Human Resources  
Craig Big Eagle, IT Manager  
Jason Darland, Desktop Support

## FINANCE

David Thorpe, Chief Financial Officer  
Kaleriya Maslyak, Accounting/Payroll Associate

## OPERATIONS

Lauren Kirchner, Office Manager  
Brian Zenk, Maintenance Supervisor

## COMPANY OPERATIONS & TOURING

Kiyon Ross, Director of Company Operations

## MARKETING & ADVANCEMENT

Lia Chiarelli, Chief Marketing & Advancement Officer  
Lexi Clements, Director of Marketing  
Liza Madison, Director of Development/Donor Engagement  
Carrie Mood Okada, Director of Development/Individual & Planned Giving  
Gary Tucker, Director of Communications  
Jen Shealy, Tessitura Database Manager  
Kristen Liang, Engagement Manager/Executive Assistant

## DEVELOPMENT

Caitlin Bell, Institutional Giving Manager  
Jackson Cooper, Major Gifts Officer  
Nicole Song, Annual Fund Manager  
LiLi Pigott, Donor Information Coordinator

## MARKETING & COMMUNICATIONS

Lindsay Thomas, Videographer  
Cassandra Lea-Saxton, Senior Manager of Digital Experience  
Noel Pederson, Marketing Manager  
Kate Farwell, Manager of Amusements

## PATRON SERVICES

Megan Weigley, Patron Experience Manager  
Max Frauel, Patron Experience Supervisor  
Amanda Mulvihill, Patron Experience Lead  
Julie Jamieson, Group Sales  
Davis Wolfe, Patron Service Representative

## PACIFIC NORTHWEST BALLET SCHOOL

Peter Boal, Director  
Denise Bolstad\*, Managing Director  
Abbie Siegel\*, School Principal  
Meg Potter, Assistant Principal  
Andrea Abercrombie, School Supervisor  
Wendy Casper, Assistant to the Managing Director  
Eva Stone, NEXT STEP Program Manager  
Naomi Glass, DanceChance Manager  
Lauren Kirchner, DanceChance Coordinator  
David Jensen, Summer Residence Director  
Kristen Carder, Katharine Grimm, Chloe Sagara, Associate Registrars  
Bethany Nielcen, FRC Operations Coordinator  
Rachel Henderson, Administrative Assistant

## FACULTY

Marisa Albee\*, Peter Boal, Nancy Crowley, Ikolo Griffin, Dana Hanson, Dane Holman, Carrie Imler, Kaori Nakamura, Jonathan Porretta, Meg Potter, Abbie Siegel\*, Jennifer Turner, Le Yin

Kelly Boal, Emily Coello, Caitlin Cooney, Michele Curtis, Dammiel Cruz, Kyle Davis, Lauren DeBard, Naomi Glass, Susan Gorter, Benjamin Griffiths, Claudia Houston-Aragon, Deborah Kenner, Miriam Landis, Dina McDermott, Samantha Myer, Louise Nadeau\*, Laurie McKarns Perrault, Lesley Rausch, Kendal Ruland, Carli Samuelson, Suzanne Singla, Eva Stone, Marjorie Thompson, Julie Tobiason\*, Malia Vassar, Amber Willett

PNB Company dancers, Guest Faculty

## SCHOOL ACCOMPANISTS

Don Vollema, Music Staff Coordinator  
Jessica Andrews, David Barela, Stephen Barnes, Carol Buschmann, David Clodfelter, David Close, Tatyana Dadayeva, Oleg Dusaev, Evelyn Hsu, Eva Huentelman, Irv Huck, Nathan Jensen, Jeff Junkinsmith, Marina Katsel, Adam Kessler, Art Koshi, Avi Lasser, Emi Oguri, Michael Owcharuk, Susan Paton, Megan Phillips, Natasha Pinelis, Randall Plut, Elizabeth Purswell, Angela Rinaldi-Gribas, Katja Rubin, Shelley Sutton-Bolton, Rob Vienneau, Annastasia Workman, Josh Zimmerman

## COMMUNITY EDUCATION

Shannon Barnes, Director  
Rochelle Rapaszky, Associate Director and Equity, Diversity, & Inclusion Initiative Coordinator  
Ann Marie Caldwell, Programs Manager

Mikhail Calliste, Ciara McCormack  
Greenwalt, Adriana Hernandez, Lauren Kirchner, Mackenzie Malhotra, Robert Moore, Amanda Morgan, Hayley Shannon, Ayako Shapiro, Suzanne Singla, Ellen Tejera, Teaching Artists

Becca Baggenstoss, Devin Bews, Noah Colbeck, Jordan Furrow, Nick Helgeson, Max Holmberg, Jeremy Jones, Adam Kessler, Accompanists

## PNBCONDITIONING STAFF

Amy Barkley, Pilates Coordinator  
Melissa Brown, Carol Elsner, Teresa Hanawalt, Deborah Kenner, Dina McDermott, Kayoko Price, Suzanne Singla, Tara F. Stepenberg, Marjorie Thompson, Jennifer Turner

## THERAPY

Steven Anderson, MD, Consulting Physician  
Boyd Bender, Director of Physical Therapy Services & Physical Therapist  
Elizabeth Rigsbee, Lisa Van Loben Sels, Physical Therapists  
Lori Brewington, Physical Therapy Assistant  
Christopher Kagen, Dorothee Wihl, Massage Therapists  
Seattle Gym, Official Fitness Club for PNB Company dancers & Staff

## CONSULTANTS

Toby Diamond, Ph.D.\*, Psychologist  
Josh Spell, MSW, LICSW, PNBS Consulting Therapist  
Alan Woodle, D.P.M.\*, Podiatrist/Foot & Ankle Specialist  
Henry Lu, P.T., A.T.C., Physical Therapist  
Monica Van Winkle, MS, RD, Consulting Dietician  
Karen Clippinger, MS.PE, Kinesiologist

## SPECIAL COUNSEL

Perkins Coie, Employment Law  
MacDonald Hoague & Bayless, Immigration Law  
Moss Adams LLP, Auditors

Pacific Northwest Ballet dancers are represented by AGMA—the American Guild of Musical Artists, AFLCIO. Pacific Northwest Ballet Orchestra is represented by the PNB Orchestra Players Organization. Stage Crew is represented by I.A.T.S.E., local #15. Wardrobe work is performed by employees represented by Theatrical Wardrobe Union #887, I.A.T.S.E. Stage Draperies: I. Weiss, New York. PNB is an EOE

\*25 or more years with PNB



## Rep 2 Digital Stream November 12–16, 2020

### ***Wonderland* (World Premiere)**

Original Music and Adaptations: Michael Wall

Additional Music: Jean-Philippe Goude, Hugues Le Bars, Erik Satie, Camille Saint-Saëns

Choreography: Penny Saunders

PNB's 2020 world premiere of Penny Saunders' *Wonderland* is principally supported by the Jane Lang Davis New Works Fund and Glenn Kawasaki, with additional support by T.R. Ko.

Principal support for the premiere of *Wonderland* was provided, in part, by PNB's newly-established Jane Lang Davis New Works Fund. In 2020 PNB announced the receipt of a million-dollar gift – designated to the PNB Foundation – from the Friday Foundation, to be used in perpetuity to provide support for a new ballet each season and/or support the full breadth of PNB's New Works Initiative.

### ***Waterbaby Bagatelles* (Excerpt)**

Music: 20th-century bagatelles (Mickey Hart and Zakir Hussain, *The Hunt*)

Choreography: Twyla Tharp

### ***Arms* (PNB Premiere)**

Music: Luis Resto

Choreography: Susan Marshall

The 2020 PNB premiere of Susan Marshall's *Arms* was supported by Sharon Lee.

### ***Ghost Variations* (World Premiere)**

Music: Robert Schumann (*Ghost Variations*, 1854, Theme, Variations II & V; *Liederkreis*, Op., 39, No. 5 "Mondnacht", 1840, arranged by Clara Schumann, 1872–1874) and Clara Schumann (*Three Romances*, Op. 11, 1839, I. Andante; Scherzo No. 2 in C minor, Op. 14, after 1840)

Choreography: Jessica Lang

The 2020 world premiere of Jessica Lang's *Ghost Variations* was principally supported by Bob Benson and Deidra Wager, with additional support by H. David Kaplan.

"*Ghost Variations* was created in August 2020 during the global pandemic. Keeping to the protocols of two pods of four dancers, donned in masks, physically distanced and never touching (unless cohabitating), sometimes behind plexiglass, with covers on Zoom in other studios, this is a ballet created for the stage with costumes and theatrical lighting. It was my intention to create a ballet for the stage that was filmed and broadcast as opposed to making a 'dance film'. Even though our only way to experience this world premiere is on a screen right now, *Ghost Variations* will seamlessly transfer to the stage for live performance when it is safe for all of us to gather in theaters again."

Choreographer Jessica Lang

Pacific Northwest Ballet's 2020-2021 digital season was proudly sponsored by Browne Family Vineyards, ArtsFund, Microsoft, and Peter & Peggy Horvitz. Special thanks also to 4Culture, National Endowment for the Arts, The Shubert Foundation, City of Seattle Office of Arts & Culture, and The Wallace Foundation.



# Letter from the **CHAIRMAN OF THE BOARD**



Looking back on our 2020/2021 season, I must say that it feels like we are indeed pandemic veterans. Eighteen months of ups and downs, twists and turns, have left us stronger, more creative, more nimble, and ever more excited and anticipatory of every moment we get to interact with our friends and patrons.

As you know, everything about our entire 2020/2021 season was virtual. The Phelps Center, PNB's rehearsal and home and home to our school, was largely quiet as pods were limited to first four dancers, then six, and staff worked mostly from home. But with the start of our 2021/2022 season, I'm happy to say the full company is back together in classes and rehearsals, albeit masked. And we have you, our live audience, to dance for. Our spirits are high and they are going higher. While 2019/2020 was a time of introspection with the onset of Covid, our 2020/2021 Dance Happens Everywhere season was a time for us to get out there and make dance and music happen in every possible way. We felt a binding loyalty and responsibility to the community we serve and we were ready to deliver.

When I look back on the past year I am humbled and grateful for how seamlessly board and staff jelled on priorities, strategy and execution. In our second season of enduring Covid, our board was largely focused on supporting, guiding, advocating, and cheering on the excellent work of our leadership team and their departments. In many ways our job felt largely two-fold: to offer financial support and a few tough opinions from time to time, and then to get out of their way and let them soar. Your ballet company has a well-oiled, experienced and cohesive team and they consistently showed up together, in spades, this past season. The board is grateful for their tireless work, steadfastness of execution and their consistent esprit de corps.

If you've been reading our updates throughout the year, in addition to navigating the pandemic environment, you know that Diversity, Equity, Inclusion, and Accessibility (I.D.E.A.) have become even more important elements of what we stand for and the responsibility we share. In addition to our staff continuing their work in this area, our board IDEA Task Force is well entrenched and making an impact at the board level as well.

It feels so exciting to be back and launching our 49<sup>th</sup> season LIVE at McCaw Hall. Live performance of our company and or our orchestra is incomparable. And while the virtual season was great, we know it's just not the same for our local audience.

PNB exists for its live audience. It's really that simple and that earnest. To be in front of you this season is a gift and we cherish every opportunity. Each performance, a moment in time; the most breath-taking moments etched in our memories to carry us until the next time we meet again.

Your love and support of this company is what has allowed us to return to the stage. Dance is not a 'nice to have'; PNB is a vital part of this community and Seattle would not be the same without us. We know that and you know that, and we plan to take the entire rest of this year convincing everyone else! And while we are giddy with showing up live for you, we know risks remain: we have yet to pull off 42 live performances of Nutcracker and to return to eight shows each for our remaining reps in 2022. But we are reaching and we are executing and there is a very bright light through the tunnel. Thank you for being there with us every step of the way.

A handwritten signature in black ink that reads "Aya Hamilton".

Aya Hamilton, Chairman

# BOARD OF TRUSTEES

## OFFICERS

Chairman – Aya Hamilton <sup>2 3</sup>  
President – Joan Fitzmaurice <sup>3</sup>  
Treasurer – Maria Mackey  
Secretary – Lynn Lindsay  
Assistant Treasurer – Dan Kingston  
Assistant Secretary – Lynne Graybeal  
Foundation Board Chairman - Peter Horvitz <sup>2 3</sup>  
Immediate Past Chairman – David Hadley <sup>2 3</sup>  
Chairman Emeritus – Sheffield Phelps\*

## VICE PRESIDENTS

Board Development – Vivian Schwab  
Governance – Lynne Graybeal  
Education – Jon Conte  
Marketing/Public Relations – Sara Jones  
Fund Development – Peter Horvitz <sup>2 3</sup>

## EX OFFICIO TRUSTEES

Artistic Director: Peter Boal <sup>1</sup>  
Executive Director: Ellen Walker <sup>1</sup>  
Young Patrons Circle: Jessica Zen <sup>1</sup>  
Parents Association: Jennifer Gaines <sup>1</sup>  
PNB STARS: Kristin Pastoriza <sup>1</sup> &  
Alesha Shemwell <sup>1</sup>

## GOVERNING BOARD OF TRUSTEES

Donna Barnett  
Carl Behnke <sup>2</sup>  
Susan Brotman <sup>2</sup>  
Sue Buske  
Jon Conte  
Sharon Falkner  
Jerald Farley  
Joan Fitzmaurice <sup>3</sup>  
Stephen E. Fuhs  
Lynne Graybeal  
Levke Haas  
David Hadley <sup>2</sup>  
Aya Hamilton <sup>2</sup>  
W. Daniel Heidt <sup>2</sup>  
Toni Hoover  
Peter Horvitz <sup>2 3</sup>  
Sara Jones  
Mariana Keller  
April Kiebertz  
Dan Kingston  
Megan Kirley  
Terrel Lefferts  
Josh Lieberman  
Lynn Lindsay  
Maria Mackey  
Frederick W. McDonald  
Carol Neiman  
Jenna Owens  
Kristin Pastoriza  
Tom A. Puentes  
James Raisbeck  
Barbara Ries  
Catherine Ries  
Vivian Schwab  
Leonard Sorrin  
Elizabeth Stokes  
Jennifer Thompson  
Aimee Truchard  
Stephanie True  
Natasha Lalji Verjee

Connie Walsh  
Jodi Wong  
Leslie Yamada  
Shirley Zaic

## ADVISORY COUNCIL

Marleen Alhadeff  
Courtney Bear  
Elisabeth Bodal  
Brooke de Boutray  
Margaret Dell’Osso  
Elizabeth Dougherty  
Kathy Alvord Gerlich  
Stacy Graves  
Adiel Guinzburg  
Kalen Holmes  
CathyBeth Hooper  
Jill Jackson  
Pamela Johnson  
Glenn Kawasaki  
Maritta Ko  
Helene Mawyer  
Alida Oles  
Mimi Richards  
Judy Schoenecker  
Alesha Shemwell  
Mel Sturman  
Peggy Swistak  
Christina Tanner  
Karen Van Til  
Deidra Wager  
Lisa Wahbe  
Kathryn Wickham

## TRUSTEES EMERITI

Norma Cugini\*  
Jane M. Davis\*  
Wendy Griffin <sup>2</sup>  
Cathi Hatch <sup>2</sup>  
Travis Keeler <sup>3</sup>  
Arthur H. Mazzola <sup>2 \*</sup>  
Jane McConnell  
Joe Norman <sup>3</sup>  
Rick Redman  
Francia Russell  
Kent Stowell  
Carol Wright

## BOARD OF TRUSTEES LIFE FELLOWS

Patty Barrier  
Kay Baxter  
Robert R. Braun, Jr.  
Ron Elgin  
James A. Elias  
Don C. Franklin  
David F. Hill <sup>3</sup>  
Catherine Hobi Hawes  
John Iverson <sup>3 \*</sup>  
Gail James  
Jim Judson \*  
H. David Kaplan  
Dr. Susan Lindsay  
Maria Postnikoff-Downing  
Marsha Rich Ingham  
Sharon Richardson  
Susan R. Richey  
Cynthia Stroum  
Linda Warson  
David B. Winder <sup>2 3</sup>  
Linda Wyman

<sup>1</sup> Advisory/Ex Officio

<sup>2</sup> Past Chairs

<sup>3</sup> Past Presidents

\*Deceased





**Digital stream**  
**December 11–26, 2020**

Music: Peter Ilyich Tchaikovsky  
 Choreography: George Balanchine

Principal sponsorship support for the 2015 PNB premiere of *George Balanchine's The Nutcracker*® with original scenic and costume design by Ian Falconer, was made possible through the generosity of Pam & Dan Baty.

Additional major support was provided by Patty Edwards, Carl & Renee Behnke, and Peter & Peggy Horvitz, along with donations from over 900 other individuals.

Star Sponsor is Chihuly Studios.

The works of George Balanchine performed by Pacific Northwest Ballet, including *George Balanchine's The Nutcracker*®, are made possible in part by The Louise Nadeau Endowed Fund.

Pacific Northwest Ballet's 2020-2021 digital season was proudly sponsored by Browne Family Vineyards, ArtsFund, Microsoft, and Peter & Peggy Horvitz. Special thanks also to 4Culture, National Endowment for the Arts, The Shubert Foundation, City of Seattle Office of Arts & Culture, and The Wallace Foundation.









# PNB SCHOOL

642

Founded in 1974, Pacific Northwest Ballet School is recognized as one of the top three ballet training institutions in the United States. Under the direction of Peter Boal, in 2019-2020 the School provided a complete, professional curriculum to 1,284 students at The Phelps Center and The Francia Russell Center. With Covid shutdowns continuing, school remained virtual for most of the school year, serving 642 students through Zoom ballet classes.

49

In September 2020, PNB welcomed 49 Professional Division students—28 new students and 21 returning, hailing from 20 states in the US.

985

In January – February 2021, administrators and faculty auditioned 985 students for Summer Course via 35 Zoom auditions . In addition, 9 artistic directors from around the US attended Zoom classes to observe Professional Division students.

\$384K

In the 2020-2021 school year, applications for tuition assistance increased. PNB School awards scholarship purely based on need, and is able to award partial or full tuition scholarships to most students who apply. PNB School awarded a total of \$384,333 in tuition assistance in 2020-2021 to 77 students.

30

Out of 417 accepted students, nearly 150 students hailing from 30 states registered for PNB’s 2021 Summer Course at the Phelps Center, in a welcome return to in-person classes.

## 2020-2021 Academic Year Students

332 Seattle

306 Bellevue

642 Total

Creative Movement, Pre-Ballet, Levels I-VIII, Professional Division



UPPER LEVEL CLASS WITH PETER BOAL

Left: PNB School Assistant Principal Meg Potter teaching a Zoom class at the Francia Russell Center.

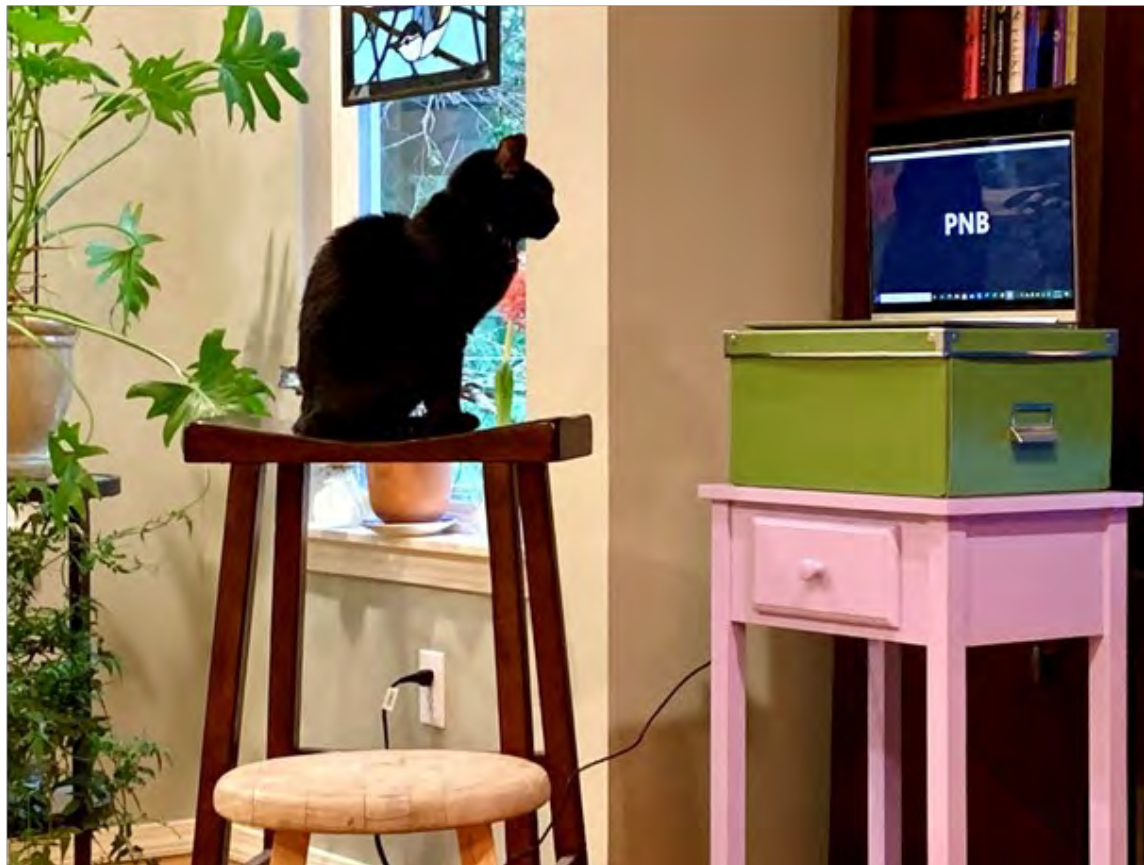
Right: Instructional video still from spring 2020.



PNB Dancers and Mentorship Program leaders Cecilia Iliesiu and Amanda Morgan with PNB School students during their virtual "Wafflebration." Photo © Amanda Morgan.



# THANK YOU to SCHOOL FACULTY and STAFF





# I.D.E.A. AT PNB SCHOOL

Since 2014, PNB School has implemented a number of Inclusion, Diversity, Equity, and Accessibility (I.D.E.A.) measures, including:

- Live captioning for Family Matinee performances.
- DanceChance mentorship program.
- Updated dress code to allow flesh-colored tights and shoes in all levels.
- Adaptive dance classes via STG Dance for PD® and Seattle Public School partnerships.
- Expanded summer course audition locations in order to reach a more diverse student population.
  - These include Tacoma Urban Performing Arts Center, Baltimore School of the Arts, Alonzo King's LINES in San Francisco, two audition locations in Japan, and annual participation in the International Audition for Blacks in Dance.
- Established New Voices and New Voices II for Levels VII and VIII, choreography classes for young women.
- Serving as LGBTQ+ safe space.

New measures in 2020-2021 included:

- Mentorship program with company dancers for all advanced students.
- Opportunities for gender and non-gender conforming students to dance and train on pointe.
- Removal of gender references in class and in printed materials (still in progress).
- Two open houses (2020) for BIPOC students.
- Inclusion of pronouns for students on all registration forms.
- All-day racial equity training for all School faculty, staff, and accompanists.
- Diversity training/discussion specific to PNB School faculty members.
- Implementation of anti-harassment and anti-racist statement for all students.
- Progress toward greater diversification of faculty with new hires and guest teachers.





# COMMUNITY EDUCATION PROGRAMS

With classes taking place remotely during the 2020-2021 school year, PNB's Community Education team was unable to deliver their usual host of in-person and in-school programming, but still found ways to keep students engaged and learning about dance. The team pivoted to digital learning, both synchronous and asynchronous through DISCOVER DANCE virtual residencies, field trips, and partnerships with community organizations.

## 2020-2021 PROGRAM HIGHLIGHTS

Thanks to an anonymous gift, **5,100** Seattle Public School students at 13 partner schools were invited to access the digital stream of *George Balanchine's The Nutcracker*®. Additionally, through the Creative Advantage All-Access Streaming Project, all Seattle youth could access free live-stream arts programming including PNB Community Education's 6-week session, *Dancing Our Natural World*.

**Partnerships:** Seattle Public Schools, Bellevue School District, Highline School District, ArtsWA, Office of the Superintendent of Public Instruction, Seattle University, Spectrum Dance Theater, Seattle Children's Theatre, Book-It Repertory Theatre, and Seattle Repertory Theatre.

**26** Schools served in 2020-2021

**100** Students participated in Dance To Learn at 7 Seattle Public School childcare sites through Launch

**85** Students received synchronous programming in out-of-school time settings through 5 different partnerships & organizations

**17** DISCOVER DANCE Virtual Residency Partner Schools

**30** Asynchronous videos created for partner classrooms

**117** Synchronous Microsoft Teams residency classes taught

**100+** Teachers received professional development to bring dance into their classrooms through the Washington State Teaching Artist Training Lab (TAT Lab)

**48** Seattle University Masters in Teaching Candidates attendees at *Using Movement & Dance in the Classroom* workshop

**23** Years serving Seattle, Bellevue, and Highline

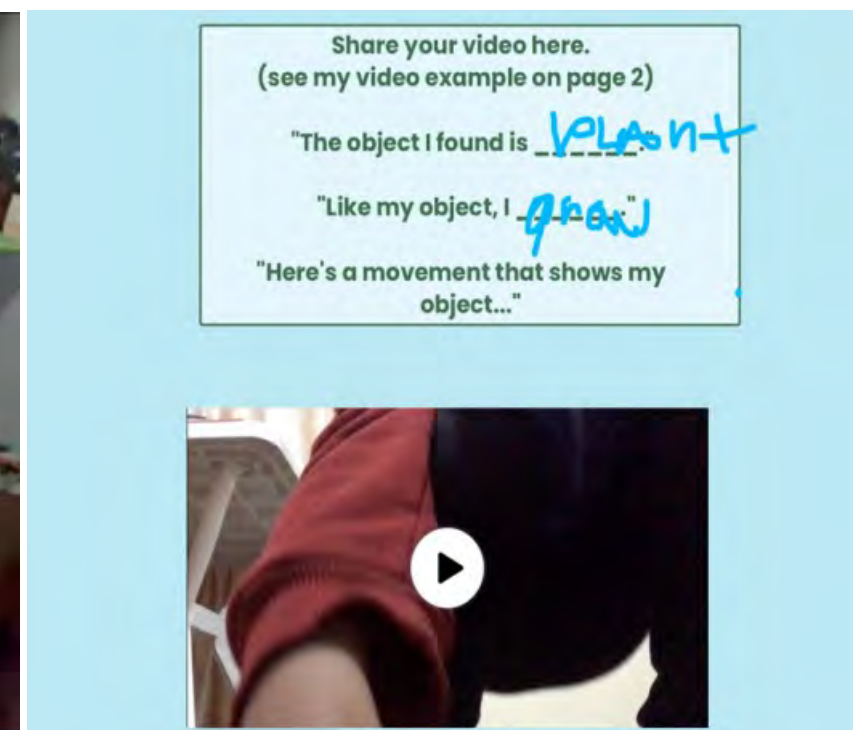
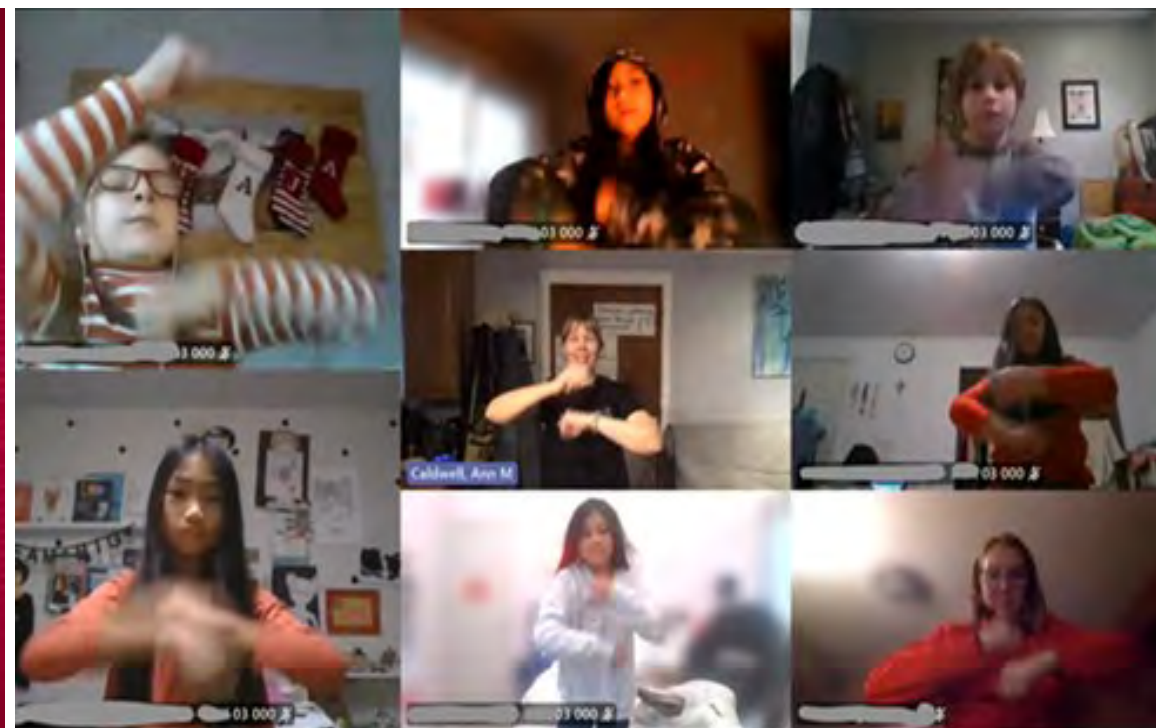
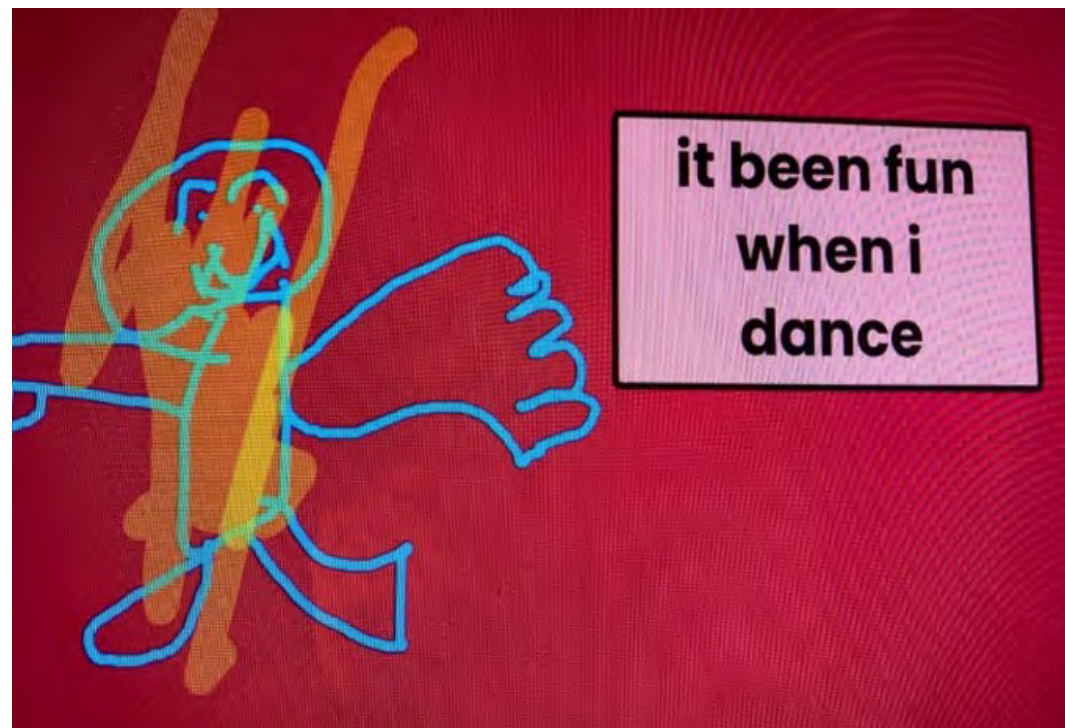
# DISCOVER DANCE

*"Something that I learned in this Discover Dance class is that we put together choreography and we did the wind and sun and so much bouncing around and happiness, it made me feel really good, I love it."*

-2021 Graham Hill 3<sup>rd</sup> grader

*"Something I learned from DISCOVER DANCE is [they] move and you can see how they're feeling."*

-2021 Graham Hill 3<sup>rd</sup> grader





# AUDIENCE EDUCATION

**186** **Ballet Talk: Pre-Performance Lectures**  
Ballet Talk, led by Education Programs Manager Doug Fullington, has been shared in podcast form since the 2018-2019 season, with over 17,000 listeners to-date. PNB released six episodes of Ballet Talk during the 2020-2021 all digital season, and two Ballet Talk videos reached nearly 186 viewers.

**5,172** **Meet the Artist**  
Meet the Artist moved online for PNB's Dance Happens Everywhere season. Interviews with choreographers, dancers, and musicians were shared with each digital stream, garnering 2,275 views.

**64,228** **Free streaming content**  
From July 2020 through June 2021, nearly 65,000 viewers tuned into PNB's free digital content. This included full digital ballets like the nine-part *The Intermission Project* and *Las Estrellas*, shorterworks like *Happening* or the collaborative *Sequentia*, performance excerpts, and dancer-generated videos.

**5,927** **Pnb is listening**  
PNB is Listening is an ongoing collaboration between PNB artists and staff, designed to highlight diverse voices within our community. Launched in June 2020, this series has featured panels including Women Who Choreograph, Dancers of Asian and Asian-American Heritage, a Pride month discussion, and more. Nearly 6,000 viewers tuned into PNB is Listening during the 2020-2021 season.

**13,566** **Online celebrations**  
In addition to the free streaming content shared above, PNB also produced videos celebrating the careers of retiring dancers Lindsi Dec and Sarah Ricard Orza, and the birthday of beloved Director of Company Operations (and retired Soloist) Kiyon Ross. PNB also produced two digital programs for its annual choreographic showcase, NEXT STEP, where PNB Company members created digital dance films which showed their new dance works performed by PNB School Professional Division students. Over 13,500 viewers tuned in.





Noelani Pantastico and James Yoichi Moore in Jean-Christophe Maillot's *Roméo et Juliette*. Photo © Angela Sterling.

# Roméo et Juliette

**Digital stream February 11–15**

Music: Sergei Prokofiev (Romeo and Juliet, Op. 64, 1935-1936)

Choreography: Jean-Christophe Maillot

From *West Side Story* to *Twilight*, Shakespeare's great romance seems always to find new interpretation, and its tale of forbidden love has been especially enticing to the dance world. Peter Boal was so mesmerized by Jean-Christophe Maillot's *Roméo et Juliette* when he attended its New York debut in 1999, that it became his first full-length acquisition for PNB as artistic director.

Supporting sponsors for PNB's 2016 production of Jean-Christophe Maillot's *Roméo et Juliette* were Bank of America, Van Cleef & Arpels and Neiman Marcus, and the Norman Archibald Charitable Foundation.

The 2008 PNB premiere of *Roméo et Juliette* was generously underwritten by Dan and Pam Baty. PNB is also grateful to Dan & Pam Baty for their leadership support to underwrite the creation of scenery and costumes for this production in 2013.

*Roméo et Juliette* is a co-production with Atlanta Ballet.

Pacific Northwest Ballet's 2020-2021 digital season was proudly sponsored by Browne Family Vineyards, ArtsFund, Microsoft, and Peter & Peggy Horvitz. Special thanks also to 4Culture, National Endowment for the Arts, The Shubert Foundation, City of Seattle Office of Arts & Culture, and The Wallace Foundation.



# Letter from the **FOUNDATION CHAIRMAN OF THE BOARD**



The PNB Foundation was formed in 1996 to hold endowment gifts and bequests exclusively for the benefit of Pacific Northwest Ballet and Pacific Northwest Ballet School. The PNB Foundation is governed by its own board elected by PNB Board of Trustees.

The Endowment provides ongoing annual support that allows PNB to create engaging performances and programs, attract and retain the best artists, and pursue vital education and community education initiatives with confidence. Gifts to PNB's Endowment serve as an investment in PNB's future as well as an enduring tribute to donors' generosity.

Last year the Foundation received \$238,000 in new gifts and bequests, and gifted \$845,000 to support PNB. Our investments provided a 36.1% return for the fiscal year ended June 2021. Over the last 20 years, investment return has been 6.5% compared to our policy benchmark return which was 6.7%.

Since its formation in 1996, the Foundation has provided over \$14.9 million to support PNB's artistic and educational programs.

The endowment funds are strategically invested to increase the value of the portfolio and to provide a dependable, growing source of annual operating support. The Foundation investments are valued at over \$25 million, and are diversified among investment categories: 81% in Equities, 8% in Real Assets such as natural resources and real estate, and 11% in Fixed Income.

The PNB Foundation Board meets quarterly to monitor the investments, review the performance of investment managers, and determine whether to make changes to the allocation of funds or the managers.

You can support PNB's Endowment by making a gift of cash or securities. If this is not the right time for you to make an outright gift to the Endowment, please consider naming PNB as a beneficiary in your will or trust. By helping to build our Endowment, you will keep PNB dancing in perpetuity.

Thank you for your dedication to and belief in Pacific Northwest Ballet.

A handwritten signature in dark ink, appearing to read "P. A. Horvitz", with a stylized flourish at the end.

Peter Horvitz, Foundation Chairman

# ENDOWMENT ASSETS

\$26,849,000

Investments*	\$25,092
Pledges*	\$49
Charitable Remainder Unitrust*	\$ 1,708
<hr/>	
Total Endowment*	\$26,849

\*in thousands

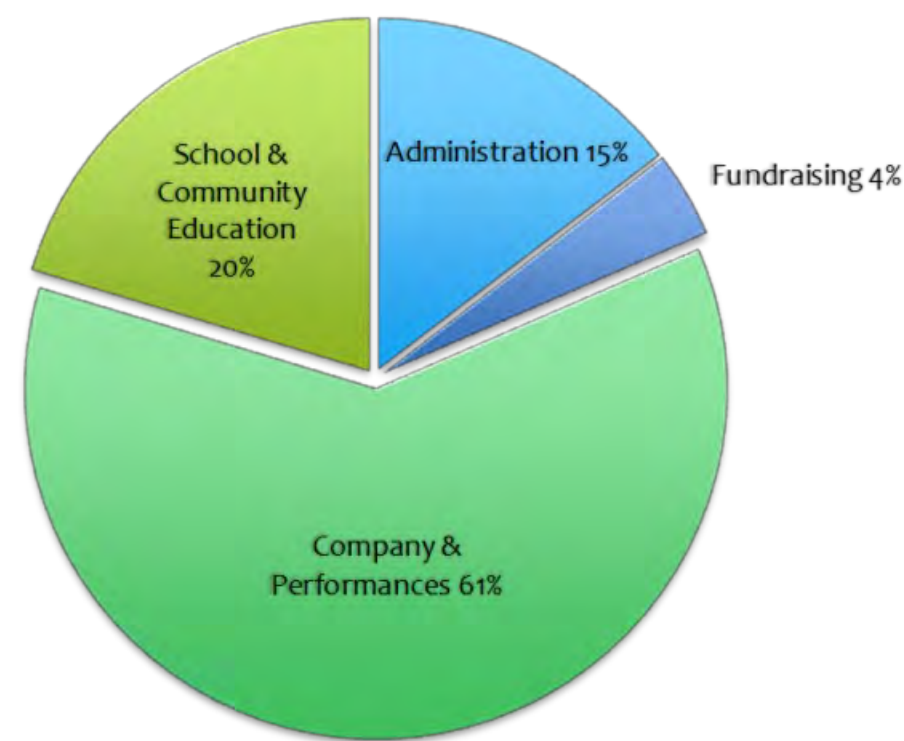




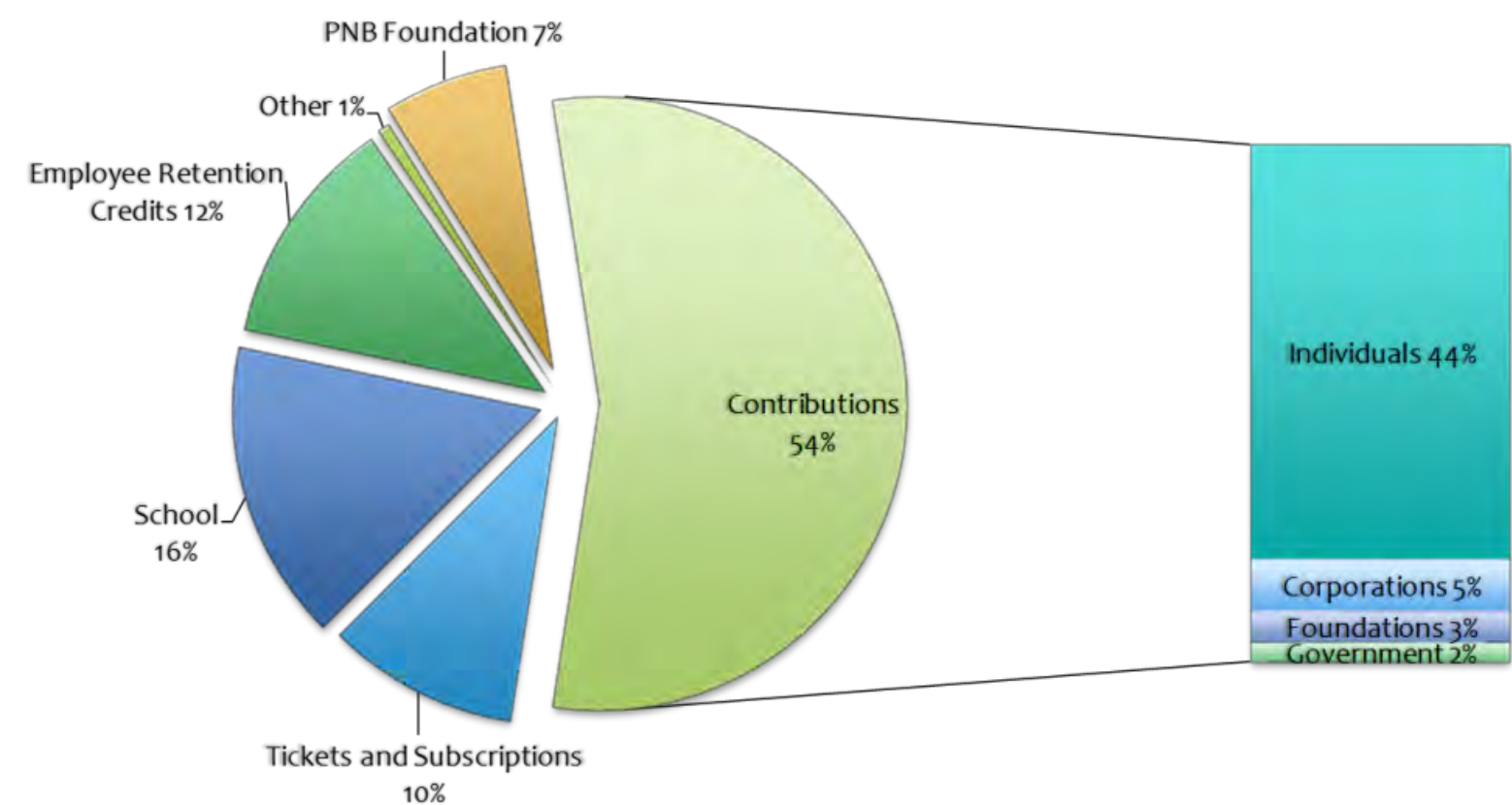
# CONSOLIDATED STATEMENT OF ACTIVITIES

For year ending June 30, 2021

Operating Expense: \$13.76 Million



Operating revenue: \$13.04 Million



**Rep 4**  
**Digital stream April 1 – 5, 2021**

***And the sky is not cloudy all day* (World Premiere)**

Music: John Adams ("Rag the Bone", "Judah to Ocean", "Toot Nipple", "Dogjam", and "Pavane: She's so Fine" from *John's Book of Alleged Dances*, 1994)

Choreography: Donald Byrd

***Pictures at an Exhibition***

Music: Modest Mussorgsky (1874)

Choreography: Alexei Ratmanský

***Future Memory* (World Premiere)**

Music: Peter Gregson ("Alan Doesn't Fight" from the motion picture *Forgotten Man*, 2019, and "Gavottes" from the album *Recomposed by Peter Gregson: Bach – The Cello Suites*, 2018), Dustin O'Halloran ("An Ending, a Beginning" from the album *Other Lights*, 2019), Jóhann Jóhannsson ("Stuk" from the album *Jóhann Jóhannsson: 12 Conversations with Thilo Heinzmann*, 2019), Jean-Michel Blais ("outsiders" from the album *Dans ma main*, 2018)

Choreography: Alejandro Cerrudo

Pacific Northwest Ballet's 2020-2021 digital season was proudly sponsored by Browne Family Vineyards, ArtsFund, Microsoft, and Peter & Peggy Horvitz. Special thanks also to 4Culture, National Endowment for the Arts, The Shubert Foundation, City of Seattle Office of Arts & Culture, and The Wallace Foundation.

The 2017 Pacific Northwest Ballet premiere of Alexei Ratmanský's *Pictures at an Exhibition* was generously underwritten by Patty Edwards.



*Future Memory* is the sixth Cerrudo ballet to enter PNB's repertory – following *Memory Glow* (world premiere 2014), *Little mortal jump* (PNB premiere 2016), *Silent Ghost* (PNB premiere 2018), *PACOPEPEPLUTO* (PNB premiere during 2020 First Look gala) and *One Thousand Pieces*, which was only performed once for a small but supportive audience at its March 2020 dress rehearsal, before PNB was temporarily shut down due to the COVID-19 pandemic. At that time, Artistic Director Peter Boal announced that Mr. Cerrudo had been appointed as PNB's first Resident Choreographer.



# DONOR RECOGNITION

Pacific Northwest Ballet depends on sustainable partnerships both onstage and behind the curtain, and never was this more true than during our first-ever all digital season. We are deeply grateful for your committed support throughout the 2020-2021 Dance Happens Everywhere season, which kept PNB's 700+ employees working during such uncertain times, and ensured we could continue to inspire, engage, and educate through dance.

Through digital streams, all-access educational videos, PNB House Parties, live virtual events, and more, PNB's 2020-2021 season was a triumph of spirit and innovation—and it was made possible by the generosity and encouragement of our many donors. We salute you for your commitment and support.

## Corporate Giving

**\$478,076**

**\$251,313 In-Kind**

Major corporate sponsors included Browne Family Vineyards, ArtsFund, The Boeing Company, and Microsoft Corporation. Corporate gifts are received in several forms, including corporate foundation gifts, in-kind donations, and sponsorships.

## Annual Fund

**\$4,982,904**

**6,242 Donors**

Annual Fund contributions support every facet of PNB, including the New Works Initiative, Community Education Programs, DanceChance, PNB School, scholarships, and general operations. In the 2020-2021 season, PNB received generous support from donors in 49 US states and 10 countries.

## Foundation & Government Giving

**\$443,800 Foundation**

**\$235,129 Government**

Major foundation donors included the Jerome Robbins Foundation, the Nesholm Family Foundation, The Seattle Foundation, The Shubert Foundation, The Virginia B. Toulmin Foundation, and The Wallace Foundation. Foundation and government contributions are designated towards both specific programs and general operating expenses.

# ENDOWMENT

## **\$1,000,000 and above**

Jeffrey\* & Susan Brotman  
Kreielsheimer Foundation  
David Michaud  
Anonymous

## **\$500,000-\$999,999**

Estate of Ruth Hoffman  
Peter & Peggy Horvitz  
Dr. Joe G. Norman, Jr.  
Estate of Althea Stroum  
Arlene A. Wright  
The Bagley Wright Fund  
Talented Students in the Arts  
Initiative, a collaboration of the  
Doris Duke Charitable Foundation  
and the Surdna Foundation  
Anonymous

## **\$250,000-\$499,999**

Mr. & Mrs. William\* J. Dunn  
Estate of Gerard L. Hanauer  
Estate of Helen C. Kloess  
Estate of Betty Kreager  
Estate of Gloria Peck-Neils

## **\$150,000-\$249,999**

Carl & Renee Behnke  
Jane & Robert Cremin  
John & Carmen\* Delo  
Laurie A. Griffith  
William Randolph Hearst Foundation  
Glenn Kawasaki  
Anonymous (2)

## **\$100,000-\$149,999**

Patrice & Kevin Auld  
Estate of Louise V. Blanks  
Estate of Mrs. Jack Cluck  
Jane M.\* & David R. Davis  
Aya Stark Hamilton  
Jeremy & Jacqueline Jaech  
Henry\* & Mary Ann James  
Spencer A. Johnson &  
Braiden Rex-Johnson

H. David Kaplan, In Memory of  
Dr. Stanley M. Pier  
Travis & Suzanne Keeler  
Catherine S. Leschen  
Roger F. Miller  
Estate of Marywilde Nelson  
The Norcliffe Foundation  
Mr. & Mrs. Tom A. Puentes  
Rick & Jennifer Redman  
John & Elizabeth Rudolf  
John F. & Julia P.\* Shaw  
Allen & Kathleen Shoup  
Kayla Skinner\*  
Sophie Sussman\*  
Estate of Jack D. Wulfekuhle

## **\$50,000-\$99,999**

Chap & Eve Alvord  
Apex Foundation  
Robert M. Arnold\*  
Estate of Edward S. Brignall  
Estate of Evangeline Edwards  
Estate of Erma Erickson  
Jane Erskine\*  
Reed & Maren Erskine  
Estate of George Franz  
Mrs. Paul S. Friedlander\*  
Robin Gainey & Jerry Sanford, Jr., In  
Memory of Jerome G. Sanford, Sr.  
John Graham Foundation  
W. Daniel Heidt & Michele B. Heidt  
Estate of Pauline Hood  
Bruce & Carol Hosford  
Estate of Susanne F. Hubbach  
Jim\* & Diana Judson  
Frederick W. McDonald  
Estate of Shirley Callison Miner  
Margaret Perthou-Taylor\*  
Jeanne Ellen Tweten & James W. Leslie  
Estate of Frankie Wakefield  
Estate of Barbara L. Weinstein  
Ron & Carolyn Woodard  
Carol Wright

## **\$25,000-\$49,999**

The Kenneth and Marleen Alhadeff  
Charitable Foundation  
Jerry\* & Rita Anches  
Sharon & Jay Ballantine  
Patty & Jimmy Barrier  
John & Kay Baxter  
Rebecca & Jack\* Benaroya  
Benjamin Bevis\*  
Mr. & Mrs. Robert R. Braun, Jr.  
Mr. & Mrs. Anson Brooks, Jr.  
Ralph E. Bruno\*  
Estate of Cordelia Burns  
Dale & Leslie Chihuly  
Cheryl Clark & Stephan Coonrod  
Clise Properties, Inc.  
Gail Cottle & Reynold Brown  
Alex\* & Norma\* Cugini  
Estate of Trudel Dean  
Derdick Trust  
Patty Edwards  
Joan Fitzmaurice  
Eliza Flug  
Susan E. Foster & Maurice J. Pirio  
William Franklin  
Estate of Merrill Gerstel  
Mr.\* & Mrs. James S. Griffin  
David & Cheryl Hadley  
Mike & Janet Halvorson  
Ross Hartling, MD & Johnese Spisso  
Cathi & Ken\* Hatch  
Estate of Anne Haugen  
Catherine Hobi Hawes  
Luke & Gail Helms  
David F. Hill & Barbara M. Hyland-Hill  
Kalen & Sean Holmes  
Moe & Susan Krabbe  
James A. Kraft & Dominique Posy  
Firoz & Najma Lalji  
Dr. Frank & Lynn Lindsay  
Michael & Barbara Malone  
Marcella McCaffray  
Audrey McCoy  
MCM a Meisenbach Company  
Carol & Paul Neiman

Laura J. Peterson  
In honor of our parents, Sheffield &  
Patricia Phelps  
James & Sherry Raisbeck  
Dr. Mack & Susan Richey  
John & Sarah Rindlaub  
Mrs. John S. Robinson\*  
Jan Rogers  
Jon & Judy Runstad  
John Charles & Mary R. Sellen-Klinker  
Jan & Jim Sinegal  
DJ Smith-Brooks  
Estate of Phillip Soth  
Delphine & Charles Stevens  
John Stokes & Laurie McDonald  
Harry C. & Joan Stonecipher  
Kent Stowell & Francina Russell  
Dr. Michael & Peggy Swistak  
Doug & Janet True  
Toby & Linda Warson  
Richard L. Weisman  
Albrecht Widmann & Kenneth Barlow  
Wyman Youth Trust  
Leslie & Tachi Yamada  
Anonymous (3)

## **\$15,000-\$29,999**

Mrs. Phyllis B. Clark\*  
Barry & JoAnn Forman  
Ruth & Bill Gerberding  
Dr. Hellmut & Marcy Golde  
Adele Golub  
Gerald & Lyn Grinstein  
Mark & Julie Hutcheson  
Skip & Jackie Kotkins  
Lisa Kroese  
Diane & Gordon Kuenster  
Helen L. Luchs\*  
Dennis & Linda Mitchell  
Estate of Beatrice R. Olson  
Heidi Orr  
Estate of Opal J. Orr  
Cynthia Phelps\*  
Mr. R. Stewart Phelps  
Barbara Prestrud, In Memory of  
Mr. & Mrs. Louis K. Bye

Lynn Ries  
Estate of Mary Schneider  
Donna & Joshua Taylor  
Wayne Thurman  
Anonymous

## **\$10,000-\$24,999**

Erik & Sherilyn Anderson  
Betty L. Blakeney  
Tom & Jeannie Blank  
Bill & June Boeing  
Diane Canaday & Daniel Hesse  
Tatiana Davidson  
Mrs. Mildred K. Dunn\*  
Jim & Ann Elias  
Dr. Stephen & Beverly Fuhs  
Mr. & Mrs. George M. Galpin  
G. Keith & Naomi Grim  
Estate of Mary S. Helmick  
John\* & Marli Iverson  
Estate of Ralph C. Jacobson  
Craig & Karen Kennedy  
Lee Kraft Cressman &  
Paul R. Cressman  
Joan T. Lasersohn  
Patricia & Wilfrid Loeken  
Keith & Mary McCaw Family  
Foundation  
Galen Mohr\*  
JPMorgan Chase & Co.  
Estate of Nancy Nuckols Keefe  
Lea Anne & Randall Ottinger  
John Parchem & Barbara Lycett  
Safeco Corporation  
Estate of Amy L. Sidell  
PNB STARS  
George\* & Nelly Sofer  
Paula Rose\*  
Craig Tall  
Estate of David Wagoner

\*Deceased

## **The following named funds have been created in the PNB Endowment:**

Alexis Phelps Dancer's Support  
Endowed Fund  
The Althea Stroum Production Fund  
Arlene A. Wright DanceChance  
Endowment Fund  
Benjamin Houk Scholarship for Young Men  
Carmen Elizabeth Delo Endowed Fund for  
Education and Outreach  
Catherine S. Leschen Endowed  
Scholarship Fund  
Frank Hobi Endowed Scholarship Fund  
Frankie Ladley Wakefield Endowment for  
Ballet Educational Programs  
Helen Kloess Endowed Scholarship Fund  
Jane McConnell Scholarship  
Janet Reed Scholarship Fund  
Kreielsheimer Artistic Development Fund  
Laurie A. Griffith Endowed Scholarship Fund  
Louise Nadeau Endowed Fund  
Lucinda Hughey Endowed Scholarship Fund  
Northwest Endowed Fund  
Patricia Barker Endowed Scholarship Fund  
Patricia Phelps Endowed Scholarship Fund  
Paula Rose Endowed Scholarship Fund  
Roger F. Miller Endowed Fund  
Spencer A. Johnson & Braiden Rex-Johnson  
Principal Dancers' Endowed Fund  
Dr. Stanley M. Pier Endowed  
Scholarship Fund  
Tom & Gretchen Puentes Endowed  
Scholarship Fund  
William Randolph Hearst Foundation  
Endowed Education & Outreach Fund



# CORPORATE & INSTITUTIONAL GIVING

**\$200,000 & above**

Friday Foundation  
Seattle Center\*  
The Hearst Foundations  
The Seattle Times\*

**\$100,000-\$199,999**

ArtsFund  
Browne Family Vineyards  
City of Bellevue  
Office of Arts & Culture|Seattle  
PricewaterhouseCoopers\*  
The Shubert Foundation  
The Wallace Foundation

**\$50,000-\$99,999**

4Culture  
The Boeing Company  
Grousemont Foundation  
KOMO 4\*  
Microsoft Corporation  
Nesholm Family Foundation  
Starbucks Coffee Company\*  
Anonymous

**\$25,000-\$49,999**

Anonymous Fund of  
The Philadelphia Foundation  
ArtsWA  
Freed of London  
The Jerome Robbins Foundation  
National Endowment for the Arts  
Perkins Coie LLP\*  
Providence St. Joseph Health  
Seattle Foundation  
Virginia B. Toulmin Foundation

**\$10,000-\$24,999**

The Boeing Company  
Bonewitz CPL  
Entertainment Industry Foundation  
JPMorgan Chase & Co.  
Jubilation Foundation Fund  
of the Tides Foundation  
Kilpatrick Townsend & Stockton LLP  
MacDonald Hoague & Bayless\*  
The Morgan Fund at Seattle  
Foundation  
Moss Adams LLP\*  
Nintendo of America  
Perkins Coie LLP  
Robert Chinn Foundation  
U.S. Bank

**\$2,500-\$9,999**

Bellevue Arts Commission  
Deloitte Services LP  
Emerald Research Group  
Fran’s Chocolates\*  
Goldman, Sachs & Co.  
Kaiser Permanente  
K&L Gates  
KUOW 94.9 Public Radio\*  
scan|design Foundation by  
Inger & Jens Bruun  
The Peg & Rick Young Foundation  
Wells Fargo  
Anonymous

**Up to \$2,499**

Alaska Airlines\*  
Amazon  
Balboa Winery  
Cordell, Neher & Co.  
Estates Wine Room\*  
Gather\*  
Impact 100 Seattle  
Kelly Foundation of Washington  
Macrina Bakery\*  
Mirella Dancewear\*  
Northern Trust  
Pagliacci Pizza\*  
Paragon Seattle  
Premera Blue Cross  
Sound Credit Union  
superGraphics, Inc.\*  
Talking Rain\*  
Tealeaves\*  
Anonymous

*\*In-Kind Support*



Abby Jayne DeAngelo and Guillaume Basso in rehearsal for Margarita Armas’ *kawsay*. Photo © Lindsay Thomas. 29





Leta Biasucci in George Balanchine's *Coppélia* © The George Balanchine Trust. Photo © Angela Sterling.

# George Balanchine's *Coppélia*

**Digital stream May 6–10, 2021**

Music: Léo Delibes (*Coppélia, ou la Fille aux Yeux d'Émail*, 1869-1870;  
with excerpts from *Sylvia, ou la Nympe de Diane*, 1876, and *La Source [Naïla]*, 1866)

Choreography: Alexandra Danilova and George Balanchine  
© The George Balanchine Trust (after Marius Petipa)

Pacific Northwest Ballet's 2021 digital presentation of *Coppélia* is supported  
by the True Family and Associate Sponsor Perkins Coie.

Presenting Sponsor of PNB's 2016 performances of *Coppélia* was the Office of Arts & Culture  
– Seattle. Principal support for the 2010 PNB premiere of George Balanchine's *Coppélia* was  
provided by Glenn Kawasaki, Dan & Pam Baty, Brady Richardson, Maurice Kanbar, Mrs.  
Jeannik Méquee Littlefield, and Rudolf Nureyev Dance Foundation.

The works of George Balanchine performed by Pacific Northwest Ballet are made possible in  
part by The Louise Nadeau Fund. PNB's *Coppélia* is a co-production with San Francisco Ballet.

Pacific Northwest Ballet's 2020-2021 digital season was proudly sponsored by Browne Family  
Vineyards, ArtsFund, Microsoft, and Peter & Peggy Horvitz. Special thanks also to 4Culture,  
National Endowment for the Arts, The Shubert Foundation, City of Seattle Office of  
Arts & Culture, and The Wallace Foundation.



# RÉVÉRENCE SOCIETY

Donald & Jeanne Adams  
David Akiyama  
Rev. Mary Petty Anderson  
Sena Baron  
Patty & Jimmy Barrier  
Amy Baskerville  
Hallock W. Beals  
Courtney Bear & John Geist  
Carl & Renee Behnke  
Janice Berlin  
Sharon Bidwell  
Louise Blanks\*  
Elizabeth Bottler\*  
John H. Bowen  
Robert R. Braun, Jr.  
Philip Brazil  
Susan Brotman  
Lorna Brown  
Mr. Peter Brown &  
    Ms. Janet McKinnon  
Carol A. Burch  
Diane Burgess  
Daniel Burkert  
Susan Y. Buske  
Sally S. Cahill Brookbank  
Dorrienne Chinn  
Ferrell Nathan Conn  
Gail A. Cottle  
Tavia Crowder  
Judith Cushman & Bob Quick  
Michael W. Dabney  
Rita Daubenspeck  
Tatiana Davidson  
Philip & Lenore Defliese  
John Delo  
Sheila C. Dietrich

Jennifer Doscher  
William J.\* & Sandra B. Dunn  
Virginia Earnshaw  
Mrs. Patty Edwards  
James& Ann Elias  
E.R.H.  
Thomas & Jane Fadden  
Kate Forster  
Russell & Nancy Fosmire  
Robin F. Gainey  
Deborah Gates  
Natalie Gendler\*  
Gail Goralski  
Inger A. Goranson  
Gene Grantham  
Lynne Graybeal & Scott Harron  
Mrs. James F. Griffin  
Susan & Bill Grinstein  
Mr. & Mrs. James M. Halverson  
Aya Hamilton  
Jan Harper  
Cathi & Ken\* Hatch  
Ms. Amy J. Haugerud  
Joann Haugerud  
Catherine Hobi Hawes  
W. Daniel Heidt & Michele B. Heidt  
Klaus and Joaquenía Heinrich  
Paula Hopping  
Peter Horvitz  
Roy L. Hughes  
John E. Iverson\*  
Tom\* & Gail James  
Robert C. Jenkins  
Ms. Karlene Johnson  
Kathleen M. Johnson\*

Spencer A. Johnson &  
    Braiden Rex-Johnson  
Barbara A. Johnston  
H. David Kaplan  
April & Steven Kieburtz  
Ken & Claudia Kilbreath  
Debby Kim  
Edith Kraemer  
Betty Kreager\*  
Bruce & Carol Koch Household  
Rocke R. Koreis & Candy J. Lee  
Frances J. Kwapil  
Joan T. Lasersohn  
Ms. Marjorie J. Levar  
Dr. Frank & Lynn Lindsay  
Ms. Penny Lorenz  
Ms. Grace Lynch  
Donald & Cecilia MacLaren  
Mr. David Mattson  
Arthur H. Mazzola  
Mr.\* & Mrs. J. Daniel McConnell  
Frederick W. McDonald  
Edward McGuirk  
Kathryn McPherson Roon  
David Michaud  
Curt & Mary Mikkelsen  
June Milette\*  
Roger F. Miller  
Paul M. Mockett\*  
Dr. Armin & Beverly Mohr  
Ann D. Molitor  
Lisa & Jonathan Morris  
Phyllis Moss  
Carol & Paul\* Neiman  
Marywilde Nelson\*  
Judy & Arnie Ness

Dr. Joe G. Norman, Jr.  
Ms. Margaret Ordornia  
Mr. & Mrs. Richard Parsell  
William & Carol\* Parsons  
Richard & Jean Patton  
Jean E. Phillips  
Dennis Pierce & Eddie Edmondson  
James & Sherry Raisbeck  
E.R.H.  
Richard C. Redman  
Ms. Christina Rich  
Mimi Richards  
Lynn Ries  
Michael Righi  
Royce & Maura Roberts  
Ann Lyda Rogers  
Mary K. Rogers  
Dr. H. Martin Rosa  
Cornelius & Penny Rosse  
JoAnne Hardt Rudo  
John Rudolf  
Michael Ann Sagin  
Ms. Stephanie V. Salamon  
Barbara Sando  
Judith Schoenecker &  
    Christopher Myers  
Sam Sebesta  
Tony Sepanski &  
    Ann Logan Phillips  
John F. & Julia P.\* Shaw  
Mr. & Mrs. Michael Sheetz  
John & Melba Short  
Sue Ann Smith  
W. Dyanne Stepanek  
Elizabeth Stokes  
Dr. Michael & Peggy Swistak

Wayne Thurman  
Dr. Darlene A. Townsend  
Beni Turan  
Nicholas Utzinger & John Rochford  
Sharon Van Valin & Richard Tait  
Elaine Vona  
Deidra Wager  
Rebecca Walker  
Pam & Bill Wanser  
Mr. Mike Waters  
Cathy & Ross Wiggins  
Ray Williams  
Mr. John C. Wilson, Jr.  
Ms. Jodi Wong  
Mr. Leonard Young  
Evelyn Zabo  
Anonymous (8)  
\*Deceased

# MEMBERS OF THE BARRE

**Artistic Director’s Circle**  
**\$100,000+**

Jeffrey\* & Susan Brotman  
Patty Edwards  
Jeanne Kanach  
T.R. Ko  
Terrel and Rob Lefferts  
Jolene McCaw and Family  
Anonymous (2)

**Chairman’s Circle**  
**\$50,000 - 99,999**

Chap & Eve Alvord  
Megan and Tim Kirley  
Marcella McCaffray  
In honor of Karen Gershowitz

**President’s Circle**  
**\$25,000 - 49,999**

Dan & Pam Baty  
Carl & Renee Behnke  
Quinn Winifred Ginsberg  
Lyndall Boal  
Laura Mair and Jim Boshaw  
Susan Y. Buske  
Dr. Stephen & Beverly Fuhs  
Lynne E. Graybeal & Scott Harron  
Glenn Kawasaki  
Sharon Lee  
James & Sherry Raisbeck  
Lynn Ries & Rod Proctor  
Dr. Michael & Peggy Swistak  
Jodi Wong  
Anonymous (2)

**REHEARSAL DIRECTORS’ Circle**  
**\$10,000 - 24,999**

Donna & Anthony Barnett  
Kathleen & Jon Blake  
Mr. & Mrs. Jon W. Blake  
William T and Sydney J Buckley  
Tom & Jeannie Blank  
Jack Blaylock & Jane Evans  
Dr. Thomas & Terrill Boyce  
Daniel & Margaret Carper  
Foundation  
Jon R. Conte & Margaret Kerrigan  
Margaret A. Dell'Osso  
John & Carmen\* Delo  
John Delo & Elizabeth Stokes  
Dr. Milton & Nancy English  
Kristina M. Erickson  
Anonymous  
Jim and Birte Falconer  
Jerald E. Farley  
Joan Fitzmaurice  
Ariel Fund  
Katharyn Alvord Gerlich  
Charlotte Nicole Guidry-Wold  
David & Cheryl Hadley  
Aya Stark Hamilton  
Anne Holmes  
Kalen Pieper Holmes  
CathyBeth & Steven W. Hooper  
Spencer A. Johnson  
                    & Braiden Rex-Johnson  
Mariana & Cesar Keller  
Janet Ketcham  
April & Steven Kieburtz

Dan Kingston & Maureen Mooney  
Firoz & Najma Lalji  
Alan & Sharon Levy  
Joshua Lieberman  
Dr. Frank & Lynn Lindsay  
Laura Lundgren  
Maria Mackey  
The MacRae Family Foundation  
Carol & Paul\* Neiman  
Jenna Owens and Warren Jackson  
Mr. & Mrs. Tom A. Puentes  
Mimi Richards  
Barbara Ries  
Catherine & Grant Ries  
Judith Schoenecker  
                    & Christopher Myers  
Vivian & Jim Schwab  
David Shank  
Adiel & Sandi Silverio  
Leonard Sorrin & Kay Deasy  
Mel & Leena Sturman  
Jennifer Thompson  
Susan Thurston  
Aimee Truchard  
Natasha Lalji Verjee  
Deidra Wager  
Robert & Lisa Wahbe  
David & Romaine Watt  
Sally Anne West & Peder Knudsen\*  
Anonymous (7)

**Patrons of the Barre**  
**\$7,500 – 9,999**

The Kenneth and Marleen Alhadeff  
Charitable Foundation  
Kenneth & Marleen Alhadeff  
Ms. Susan L. Ehlers  
W. Daniel & Michele B. Heidt  
Michele & Dan Heidt  
Pam & Ned Johnson  
Sara A. Jones & Ryan Richter  
Susan & Ronald Runyon  
Mary-Catherine Schugel  
Peyton & Carolann Storli  
Anonymous (2)

**Members of the Barre**  
**\$5,000-\$7,499**

Linda & Tom Allen  
Jane & Peter Barrett  
Jeffrey A. Bell  
Paul and Leora Bloom  
Gary & Linda Blume  
Mr. & Mrs. Robert R. Braun, Jr.  
Collett Cox  
Crissa Cugini  
In honor of Norma Cugini  
Bertrand & Brooke de Boutray  
Phil & Lenore Defliese  
Elizabeth & Shawn Dougherty  
James and Anne Dulfer  
Elizabeth Giblin Designated Fund  
Anne M. Foster  
William E. Franklin  
Ian Friedland  
Susan M. Gardner  
Courtney & John Geist

Gail Goralski  
Stephen & Marie Heil  
Toni Hoover & Alfred Nettles  
John\* & Marli Iverson  
Stephanie Jung  
Christine Kimes  
Seymour & Evelyn Klebanoff  
Karen Koon  
Rocke R. Koreis & Candy J. Lee  
Renee Lund  
Glenn Lux  
Barbara & Michael Luxenberg  
Christina Marra and Paul M. Silver  
Ms. Cheryl McNees  
Ms. Barbara Lycett & Mr. John M.  
Parchem  
Richard & Jean Patton  
Ms. Chris Pickles  
Ellen Pottenger & Simone J. Berger  
Dick & Alice Rapasky  
Christina Rich  
Tom & Carolyn Roe  
Eric Schlegel & Mary Stout  
Alesha & Dave Shemwell  
Denise Littlefield Sobel  
Ms. Roanne Sones  
Christina Tanner  
Karen & Steve Van Til  
Tom & Connie Walsh  
Kathryn Wickham  
Cathy & Ross\* Wiggins  
Ms. Robyn Wilson  
Sylvia Zonoff  
Anonymous (4)

\*Deceased



## Rep 6 Digital stream june 10–14, 2021

### ***Curious Kingdom* (World Premiere)**

Music: Maurice Ravel, Erik Satie, and songs performed by Edith Piaf (*Non, je ne regrette rien*, *La vie en rose*, *L'homme à la moto* [*Black Denim Trousers and Motorcycle Boots*])

Choreography: Christopher Wheeldon

The world premiere of Christopher Wheeldon's *Curious Kingdom* is generously underwritten by Susan Brotman.

### ***The Veil Between Worlds* (World Premiere)**

Music: Oliver Davis

Choreography: Edwaard Liang

Principal support for the world premiere of Edwaard Liang's *The Veil Between Worlds* is provided by Denise Littlefield Sobel, with additional support provided by Chap & Eve Alvord, T.R. Ko, Lyndall Boal, Jodi Wong, Tom & Connie Walsh, Stephanie Jung, and Elizabeth Pirnat.

### ***PACOPEPEPLUTO***

Music: Songs sung by Dean Martin and Joe Scalissi (*In the Chapel in the Moonlight*, *Memories Are Made of This*, and *That's Amore*)

Choreography: Alejandro Cerrudo

The 2020 Pacific Northwest Ballet premiere of Alejandro Cerrudo's *PACOPEPEPLUTO* was generously underwritten by Susan Brotman.

PNB thanks Presenting Sponsor for Rep 6, The National Endowment for the Arts; and Associate Sponsor, Bonewitz.

Pacific Northwest Ballet's 2020-2021 digital season was proudly sponsored by Browne Family Vineyards, ArtsFund, Microsoft, and Peter & Peggy Horvitz. Special thanks also to 4Culture, National Endowment for the Arts, The Shubert Foundation, City of Seattle Office of Arts & Culture, and The Wallace Foundation.



They said it couldn't be done, and yet Pacific Northwest Ballet pushed forward with its plans for an all-digital season, featuring a selection of archival recordings mixed in with a cornucopia of new works choreographed, rehearsed, and filmed under strict pandemic protocols. And audiences responded, tuning in from near and far, with patrons in all 50 states and 34 countries. PNB concludes its first- (and hopefully last-) ever digital season with its **Rep 6**, featuring two more world premiere works from Tony Award-winning choreographer Christopher Wheeldon, and artistic director of Ballet Met, Edwaard Liang. The program also included an encore performance of Alejandro Cerrudo's cheeky *PACOPEPEPLUTO* which entertained audiences during PNB's First Look gala earlier in the season.

# ANNUAL FUND

*CONDUCTOR'S CIRCLE*  
*\$2,000-\$3,999*

Dr. Itamar B. Abrass & Dr. Christine K. Abrass  
Mr. & Mrs. George Bertsch  
Mr. & Mrs. Keith Birdwell  
Jane M.\* & David R. Davis  
John & Chani Doggett  
Scott & Kim Fancher  
Ms. Sharon Lamm  
Stephen & Marleen Land  
Joan & Tim Meskill  
Charles Montange & Kathleen Patterson  
Dean A. Pollack & Lizabeth A. Wilson  
Megan & Greg Pursell  
Steven & Nancy Rogers  
Laura & Adam Selipsky  
Mrs. Patricia Steiner  
Camille Uhlir  
Nicholas Utzinger & John Rochford  
In memory of John L. Voorhees  
Maggie Walker  
Anonymous (2)

*CHOREOGRAPHER'S CLUB*  
*\$1,000-\$1,999*

Deborah & Charles Adelman  
Marie Anderson & John Mitchell  
Jane & Brian Andrew  
Dr. Barbara G. Beatty & Dr. J. David Beatty  
Greta & Alicia Birkby  
Mr. & Mrs. Dana Birkby  
Capt. & Mrs. Paul Bloch  
In celebration of Peter Boal and Ellen Walker  
Marcia & Les Books  
Katherine Braun & James Dean  
In memory of Dean K. and Ulista J. Brooks  
Lora Lee Brown  
Mr. & Mrs. Donald W. Capron  
Heinke Clark  
Melissa Glick & Thomas Coates  
Mr. and Mrs. Mike Creighton  
Ms. Patricia E. Crockett and Mr. Keith Johnson  
Bruce Cross & Karen Kruse  
Krijn & Judy de Jonge  
Paula Diehr & Frank Hughes  
Sheila C. Dietrich  
Patricia Dodge  
Emma Timmins-Schiffman & Ronen Elad  
Dr. & Mrs. Gary Enzmann  
Pamela Fink & Michael Bevan  
Dr. Randall & Betty Fisher  
Richard & Gloria Folsom  
Mr. Frederic C. L. Fu  
Suzanne Schreiber & Robert Greco

Anne & Zach Grout  
Geraldine Hashisaki  
Ms. Joann Haugerud  
David Hicks & Rebecca Black  
Ms. Julie Hill  
Mr. & Mrs. Jonathan Himmelfarb  
Gary & Jennifer Hinds  
Ellen Hopkins & Erik Anderson  
Ms. Karen Hoven  
Dr. Catherine Hunter  
Joyce & Craig Jackson  
Tom\* & Gail James  
Larry & Robin James  
Ms. Lyndal Johnson  
Tom Freeman & Mikala Johnson  
Gilla Kaplan  
Travis & Suzanne Keeler  
Dr. David Kerlick  
Virginia King  
Mrs. Christina H. Kirk  
Mrs. Audrey S. Kirsop  
Ms. Michelle M. Krussel  
Suzy Lloyd  
Ms. Grace Lynch  
Mrs. Nicole MacInnes  
Ms. Anne D. Martin & Ms. Leslie Martin Kinkade  
Ms. Judith McBroom  
Ms. Marguerite E. McCarty & Mr. Paul D. Joppa  
Mr. Marshall McClintock  
M. Victoria McFall  
Lesley McGalliard  
Roger F. Miller  
Maryl Nance & Liam Mundy  
Martha Nalebuff & Mark Wagner

Mr. Lev Novik  
David Ogden  
Ms. Kathryn Pratz  
Cynthia Putnam & Mark Groudine  
Mr. & Mrs. Douglass Raff  
Sandi & Jim Reed  
Mr. Harry Reinert  
Steven & Fredrica Rice  
Haugen Family  
Erik Selberg & Mary Kathryn Rodgers  
Ms. Joy Rogers  
In memory of Fred Sadeghi  
Barbara Sando  
Betsy & Jason Schneier, MD  
Stephen Alley & Amy Scott  
Beth Shipley  
Erika Sigmon  
Ronald & Dawnelle Spaulding  
Delphine and Charles Stevens  
Susan & Philip Stoller  
Mr. Michael Summy  
Jessica Tarzan  
Ms. Elizabeth A. Taylor  
Wayne Thurman  
Ms. Lorraine Toly  
Mimi A. Tutihasi  
Anonymous  
Mr. Owen M. Winter  
Tim & Tiffany Wissner  
Mr. James H. Wood & Mrs. Martha L. Shapiro  
Leslie & Tachi Yamada  
In memory of Margret K. Zeller  
Anonymous (13)

*PRINCIPAL*  
*\$500-999*  
Mr. & Mrs. L. A. Andrew, III  
Phoebe Andrew  
Mr. Jonas Barklund  
Ms. Margaret Bossi  
Bowman Price Financial Advisors  
In honor of Sheila Brunstad  
Judy de Jonge  
Ms. Rebecca Dean  
Glenn & Bertha Eades  
Mr. and Mrs. Glenn Eades  
Mrs. Lynne Ellis  
Sharon Falkner & Gene Chamberlain  
Ms. Dorothy M. Finley  
Dorothy M. Finley  
Tracy and Alice Forsythe  
Ms. Donna J. Franklin  
Lisa Hanna and Wesley Henrie  
Wesley Henrie & Lisa Hanna  
Ms. Patricia A. Hopps  
Anonymous  
Ms. Carol S. Ivory-Carline and Mr. Jan D. Carline  
Joan & Bob Lawler  
Vivian Lee  
Hank Levy and Ronit Katz  
Ms. Sarah Lovejoy  
Gwen Lundberg, David Aggerholm  
Marchell Mathes  
Ms. Carol J. McCready-Cohn  
Dr. and Mrs. Robert Metz  
Councilwoman C. Louise Miller & Mr. Stafford Miller  
Julie Anderson Miller

Louise Miller  
Judy & Arnie Ness  
Thi Nguyen  
Richard & Sally\* Parks  
Jenny & Jeff Payne  
Mr. & Mrs. Jeff Payne  
Everett E Reagan  
Mrs. Anita Reich  
Kim Richter  
Patricia S. Robbins  
Sabra & Mark Rossman  
Steve & Linda Saunto  
Bruce Schickler  
Alice and Don Schilling  
Jim Schneidmiller & Gina Vangelos  
Dr. Sam L. Sebesta  
Eric and Julie Shankland  
Mr. & Mrs. Gary Sipple  
In honor of George Vivian  
John Snider & Todd Taketa  
Ms. Diane E. Stark  
Mr. Walter M. Stuteville  
Tom Sykes and Sarah Thomas  
Dr. Michael P. Theisen and Mr. Ronald S. Jones  
Mr. Epaminondas Trimis  
Richard & Rosemary Tuengel  
Chad & Tina Urso McDaniel  
Bruce Veale & Michelle Steffen  
In honor of Ellen Walker  
Laurie Weckel  
Shannon Wilson and Mitchell Johnson  
Robert & Jennifer Youngken  
Mr. and Mrs. Christian Zobel  
Anonymous (9)



# ANNUAL FUND

*SOLOIST*  
*\$250-\$499*  
Michael C. Allen  
Hannah Arntson  
Gail & William Bain  
Kendall and Sonia Baker  
Ms. Lauret Ballsun  
Ms. Margaret Berger  
Linda Berkman  
Bobbi Bild  
Thomas & Carol Borda  
Mrs. & Mr. Jo Borden  
In honor of musicians  
Philip Brazil  
Suz & Katie  
Thomas Bruhns  
Ms. Barbara J. Burns  
Mrs. Karen Carlson-Iffert &  
    Ms. Teresa Iffert-Dul  
Barbara Cordova  
Mr. & Mrs. Jack Cordova  
Mary C Coward & John Empey  
Sandra Craig  
Mr. Edward Darr and  
    Mr. James Fesalbon  
David and Pat DeGroot  
Karen Domino  
Mr. & Mrs. Fred Drummond  
Ms. Marilyn E. Eck  
Ms. Lynn Elmore  
Sergey Genkin  
Mr. Sergey Genkin  
Dr. Terry B. Gernsheimer MD  
Anonymous  
Mr. & Mrs. Jay Goldstein  
Susan & Bill Grinstein  
Dr. & Mrs. Paul R. Gutowski  
Ms. Gail Halpern  
Ms. Talitha J. Harper  
Cynthia Harris  
Julia Hecht & Ken Walkky

Klaus and Joaquenia Heinrich  
Jennie Hendrie  
Anonymous  
Elizabeth C. Iliesiu  
Greg & Tamara Jackson  
Ms. Jennifer Jones  
Mr. Paul S. Kassen  
Ms. Susan Knox & Mr. Weldon Ihrig  
Suzanne Kohl  
Bill & Kathie Kreager  
Ms. Mary Ann Langland  
Ms. Eleni Ledesma  
Elizabeth and Paul Leiba  
In honor of Helen Leseney  
Ariel Lopez & Thomas A Finley  
Ms. Kathy Lopez  
Michael Mabrito  
Helen Mark  
Mrs. Anne Matsen  
Christopher Maurer  
Mr. Christopher Maurer  
David & Karin McKee  
Ms. Sally Morgan  
Anne Willoughby Nelson  
Lenore Pearlman  
Diane Pien & Merle Weiss  
Madelon Pomeroy  
Barbara & Neal Porter  
Deborah Ramsden  
Ken Rash & Scott Ofstead  
Brian & Laura Readdy  
Arthur & Wendy Rodriguez  
Mr. David Russo & Ms. Valerie  
    Torrens  
Mr. & Mrs. Charles Sacrison  
Dianne & Jeremy Salesin  
Ms. Sandi Schildt  
Mr. & Mrs. Donald L. Scott  
Karla Steele & Dick Siebe  
Bernard and Susan Silbernagel  
Mr. & Mrs. Roy Sparks

Katherine and Brock Stiles  
David & Jane Stockert in honor of  
    Howard F. Weckel  
Sharon Van Valin & Richard Tait  
Donna & Joshua Taylor  
Jeffrey Tinnea and Ann Davis  
Julie C. Van Camp  
Linda Vangelos & Stephen Kaufer  
Mr. Ernest Vogel  
Rebecca Walker  
Karen Wetmore  
Mrs. Margaret A. Whitney  
Ms. Judith Wilensky  
Judith Woods  
Ms. Corrie Yackulic  
Marvin Yamaguchi & Dianne  
    Graham  
Dr. & Ms. Conrad Yunker  
Ms. Maxine A. Zemko  
Ling Zhang  
Anonymous (13)

*CORPS DE BALLET*  
*\$100-\$250*  
Clayton & Barbara Anderson  
Ms. Evelyn Arrigoni-Armstrong  
Lauren Auerbach  
Mrs. Winifred M. Becker  
Tessa & Chris Bennion  
Dr. Stephen Berard  
Ms. Eileen Bleeker  
Stephen & Kristine Bowman  
Joan H. Bright  
Michael Crenshaw & Mary Brodd  
John & Gilda Brown  
Ms. Cynthia A. Clegg  
Andrew & Betty Cowan  
Robert & Karen Crider  
Col. & Mrs. Dennis M. Cunneen  
Mrs. Barbara Daugherty  
Ms. Kay R. Davis

Dottie Delaney  
Alec Donaldson  
Donna & Rob Dughi  
William Echols  
JoLynn Edwards  
Marilyn Evans  
Charlie Fink & Leonard Jones  
Susan Fink  
Ms. Carolyn A. Frankhouser &  
    Ms. Charlotte Mcfail  
Carolyn Frankhouser  
Ms. Maureen Frisch  
John & Karin Fry  
Donn Fry/Diane Stielstra  
James & Lynda Gable  
Linda Garrido  
Alicia J Yamamoto and David W  
Gray  
Ms. Sarah Jane Gunter  
Jenny Hartley  
Ms. Jenny V. & Emily Hartley  
Jenny Hartley  
Duston & Kathleen Harvey  
Drs. K.E. and I. Hellstrom  
Paul Heppner  
Mary Himple  
Mr. & Mrs. Walter A. Himple  
Brent and Nancy Hirschman  
Ms. Joanne Hjort  
Jane & Randall Hummer  
Julie Hungar  
Mrs. Julie Hungar  
Ms. Patricia A. Hynes  
Lisa Jaret  
Ms. Robin Jenkinson  
Margretta Josephson  
Ms. Margretta J. Josephson  
Ms. Dysa Kafoury  
Ms. Helene Kaplan  
Linda Katz  
Ms. Stephanie Kirby

Leslee Kiyokawa  
Ms. Leslee A. Kiyokawa  
Karen Knebel  
Kevin Koreis  
Larry & Evonne Kucera  
Mr. Lawrence P. Kucera and  
    Ms. Diana Brown  
Kristine A. Larson  
Meghan Larson  
In celebration of Las Estrellas  
Mrs. Joy J. Lauderbaugh  
Mr. & Mrs. John B. Leaman  
Ken and Nanette Leaman  
Marilyn & Vernon Leck  
Lenore and Don Lynch  
Mr. and Mrs. Horst Mader  
Heidi Madson  
Eva Mannisto  
Sandra Marshall  
Carolyn Mawbey  
Lila Woodruff May  
Edward McGuirk  
Barbara Mericle  
Ms. Kitty Mintz  
Marcy & J Montgomery  
Mr. Roger J. Morris  
Ms. Kara Moss  
Dee and Bob Mulford  
Ms. Jean M. Murakami  
Donald & Lynn Murphy  
Donna Murray  
Suz and Dan Myers  
Berl Nussbaum  
Sherry Ogur  
Beverly Osband & Eberhard Riedel  
Mr. and Mrs. David F. Parker  
Mr. and Mrs. Edward Pavlin  
Kathryn Pearson  
Hal Perkins  
Steve and Sue Petitpas  
Don & Carolyn Priest

Jill Princehouse  
Ms. Linda Quan MD  
Stacy Quan and Jeff Shaw  
Ms. Rosalind Renouard  
James and Elizabeth Roche  
Mr. & Mrs. Ronald Rodeheffer  
Barbara Roper  
Dr. John Rusin  
Ben Ryan  
Polly Sanford  
Augusta Sedoff & Howard  
Schanzer  
David & Barbara Sherer  
Hazel  
Donald Skirvin  
Mr. Edward J. Woods &  
    Ms. Nancy E. Sleight  
Mrs. & Mr. Jerry F. Smith  
Ms. Ethel Story  
Ethel M. Story  
Ms. Priscilla L. Strand  
In memory of Nira Sweeney  
Ms. Valerie Ann Taylor  
Vivienne Lee Tooman  
Mr. & Mrs. Ronald Tooman  
Kat Uzzelle  
Susan L. Vestal  
Elsa & Art Vetter  
Mr. & Mrs. Arthur Vetter  
Christine & Oscar Vilches  
Ms. Diane Walker  
Ms. Joan Walsh  
Mark and Signe White  
Daniel Wilson & Jacob Mans  
Ms. Dawn Wojciechowski  
Ms. Leslie Wright  
Yolanka Wulff  
Glen & Cathy Wyatt  
Mrs. Diane D. Yokoyama  
Mr. Leonard Young  
Anonymous (36)

