



ANNUAL REPORT

2021/2022



VISION

Enriching lives in the Pacific Northwest, considered a national treasure, and acclaimed worldwide, PNB epitomizes excellence in the performing arts.

MISSION

Set new standards for artistic excellence, innovation, and creativity.

Attract the most talented dancers, choreographers, musicians, collaborative artists, staff, and volunteers.

Educate and develop dance artists as well as enthusiasts.

Captivate a devoted, supportive, continually growing, and diverse audience.

Strengthen our financial and organizational foundation.



LETTER FROM THE ARTISTIC DIRECTOR



In March of 2020, we abandoned the Phelps Center and the Francia Russell Center, turning out lights as we left, closing all operations for the Company, School and PNB programs. As we headed home, we optimistically reassured ourselves by saying it might just be for a few weeks - or even months. I don't need to tell any of you how wrong our projected timelines were. Even when we opened the "comeback season" in September of 2021, we couldn't have anticipated how tentative our operations would continue to be in the lingering caution and ever-changing news of the pandemic.

A striking All-Alejandro Cerrudo program was only seen by a few hundred ticket buyers - all masked, socially-distanced and checked at the door for proof of vaccination. *Roméo et Juliette* is known as box office gold, and with the final PNB performances by beloved ballerina Noelani Pantastico, one never would have anticipated falling short of our modest single ticket goal. Those in attendance made up for the empty seats next to them by cheering twice as loud. Even a winning All-Twyla Tharp program underwhelmed with attendance. Variants and new habits continued to plague our return to normal. But we found a silver lining in subscriptions (both in-person and digital), and single ticket sales for *The Nutcracker*, *Swan Lake* and *Beauty and the Beast*. Our patron base proved loyal and committed to helping PNB through challenging times while helping to usher us into our 50th Anniversary Season.

We also saw school enrollment drop to 50% of its 2019 high. Community Education programs and our DanceChance program struggled without in-person public school activities. DISCOVER DANCE performances could not take place and fundraising events were postponed. It was a challenging year on many fronts.

It is during the most difficult times that you see your greatest strengths. We have an amazing team at Pacific Northwest Ballet. At every turn, employees demonstrated remarkable tenacity. Dancers worked tirelessly while breathing through masks and testing daily. Our development staff underscored the importance of support in times of vulnerability and found unwavering commitment and extraordinary generosity. Marketing staff reassured patrons and catered to individual needs, making every audience member feel valued and understood. Parents, students, faculty, and staff did what they could to help return PNBS to in-person performances and training and thanked everyone for their patience along the way.

Here are a few highlights of our comeback season that deserve mention: We conducted Racial Equity Training for 299 full- and part-time employees, Professional Division students, and Board & Advisory Council members. We presented our first sensory-friendly performances. We ensured that dancers of all ages could elect to wear flesh-toned tights and shoes. We designated gender-neutral spaces, and un-gendered roles. We conducted a 21-city audition tour for our summer course. We returned to live performances of the Family Matinee, Next Step, and School Performance. We presented a full digital season for all subscribers in Seattle and around the world. We continued to develop plans for strategic expansion of our facilities and financial reserves. We presented over 90 performances in three cities. The PNB orchestra played in every one of these performances. We managed two full company/full orchestra tours, despite huge logistical hurdles and a few dozen cases of COVID. We built all new *Swan Lake* bodices. We brought seven ballets to New York City and three to Los Angeles, where we also presented a second incarnation of PNB's new Dance Film Festival, a choreography class for area middle school students, and a dance class for people living with Parkinson's disease.

For all the technology we have gained and benefited from over the past few years - online registration for classes and auditions, Zoom meetings, Crystal Pite coaching through a monitor, etc., we are still unable to order a crystal ball, so we don't know what's around the corner. However, we do know steady management, as demonstrated throughout the tough times and the boon times by Executive Director Ellen Walker, plus fiscal prudence and a clear understanding of the need for measured risk by CFO David Thorpe and PNB's Finance Committee and Board of Trustees, is the most prudent preparation for what's to come whatever that may be. We are an institution that steps forward united by sound judgement and core principles, with a clear and unwavering commitment to serving our community through dance and education. We are also humbly aware we exist because of that community, and remain profoundly grateful for the support and feedback we have received. Despite a few blows, we have never been stronger, and we have never been more ready to dance into the next fifty with you by our side.

A handwritten signature in black ink that reads "Peter Boal". The signature is fluid and cursive, with the first name "Peter" and last name "Boal" clearly distinguishable.

Peter Boal, Artistic Director

ARTISTIC STAFF

Peter Boal, Artistic Director
Kent Stowell and Francia Russell, Founding Artistic Directors

PRINCIPALS

Leta Biasucci
Kyle Davis
Angelica Generosa
Elle Macy
James Yoichi Moore
Elizabeth Murphy
Noelani Pantastico
Lucien Postlewaite
Lesley Rausch
Dylan Wald

SOLOISTS

Jonathan Batista
Joshua Grant
Cecilia Iliesiu
Miles Pertl
James Kirby Rogers
Sarah-Gabrielle Ryan
Price Suddarth
Ezra Thomson

CORPS DE BALLET

Madison Rayn Abeo
Malena Ani
Guillaume Basso
Ryan Cardea
Dammiel Cruz-Garrido
Mark Cuddihee
Christopher D’Ariano
Abby Jayne DeAngelo
Luther DeMyer
Connor Horton
Noah Martzall
Amanda Morgan
Sarah Pasch
Ginabel Peterson
Christian Poppe
Juliet Prine
Clara Ruf Maldonado
Kuu Sakuragi
Emma Love Suddarth
Yuki Takahashi
Leah Terada
Sarah Villwock
Genevieve Waldorf
Lily Wills

APPRENTICES

Ashton Edwards
Melisa Guilliams
Zsilas Michael Hughes
Joh Morrill

Emil de Cou ,
Music Director/Principal Conductor

Christina Siemens,
Principal Company Pianist

Otto Neubert, Anne Dabrowski, Gio-
vanni Villalobos
Rehearsal Directors

Norbert Herriges,
Technical Director

Christine Joly De Lotbiniere,
Costume Shop Manager

Josh Archibald-Seiffer,
Company Pianist/Conductor



Cecilia Iliesiu and Lucien Postlewaite in Alonzo King's *The Personal Element* . Photo © Angela Sterling. 4

ORCHESTRA



VIOLIN 1

Michael Jinsoo Lim,
Concertmaster
Jennifer Caine Provine,
Associate Concertmaster
Emilie Choi,
Assistant Concertmaster
Stephen Daniels**
Tom Dziekonski*
Ella Marie Gray*
YeSol Im
Lynn Bartlett Johnson**
Petro Krysa

VIOLIN 2

Rita Lee, *Principal*
Ingrid Fredrickson*
William E. Boyd*
Anne Cady*
Adrianna Hulscher
Laurie Wells
Kim Zabelle**

VIOLA

Alexander Grimes, *Principal*
Betty Agent*, *Assistant Principal*
Kayleigh Miller
Joyce Ramée*
Laura Renz
Eileen Swanson*

CELLO

Page Smith*, *Principal*
Virginia Dziekonski*,
Assistant Principal
Meg Brennand**
Andrea Chandler**
Charles Jacot
Brian Wharton

BASS

Todd Larsen**, *Principal*
Stephen Schermer**,
Assistant Principal
Maurice Clubb
Ben Musa**

FLUTE

Evan Pengra Sult*, *Principal*
Laura Werner

PICCOLO

Laura Werner

OBOE

Dan Williams, *Principal*
Tad Margelli*

ENGLISH HORN

Tad Margelli*

CLARINET

Jennifer Nelson**, *Principal*
Denise Lum**

BASS CLARINET/E-FLAT

Denise Lum**

BASSOON

Mona S. Butler*, *Principal*
Dana Jackson

HORN

Rodger Burnett*, *Principal*
Danielle Lemieux
Richard Reed*
Ryan Stewart

TRUMPET

Sarah Viens, *Principal*
Richard Werner*

TROMBONE

Mark Williams*, *Principal*

BASS TROMBONE

Douglas Nierman*

TUBA

Ryan Schultz, *Principal*

TYMPANI

Phillip Hanson*, *Principal*

PERCUSSION

Matthew Kocmierski*, *Principal*
Gunnar Folsom**

HARP

John Carrington, *Principal*

KEYBOARD

Christina Siemens, *Principal*
Josh Archibald-Seiffer

PERSONNEL MANAGER

Rodger Burnett*

MUSIC LIBRARIAN

Mona S. Butler*

*Founding members of PNB Orchestra (1989).

**25 plus years with PNB Orchestra.

The Pacific Northwest Ballet Orchestra is composed of musicians represented by the PNB Orchestra Players Organization.

Steinway & Sons is the official piano of PNB.

Singularly CERRUDO

SEPTEMBER 24—26, 2021
DIGITAL STREAM OCTOBER 7—11, 2021

PNB's first performances back onstage at McCaw Hall were open only to full season subscribers. The creative power of PNB's Resident Choreographer Alejandro Cerrudo was on full display in this triple bill, featuring the moving tranquility of *Silent Ghost*, spectacular teamwork in an excerpt from *One Thousand Pieces*, and a journey through the unexpected twists and turns of *Little mortal jump*.

SILENT GHOST

Music: Dustin Hamman, King Creosote & Jon Hopkins, Ólafur Arnalds, Nils Frahm

Choreography: Alejandro Cerrudo

ONE THOUSAND PIECES (Excerpts)

Music: Philip Glass

Choreography: Alejandro Cerrudo

LITTLE MORTAL JUMP

Music: Beirut, Andrew Bird's Bowl of Fire, Alexandre Desplat, Philip Glass,

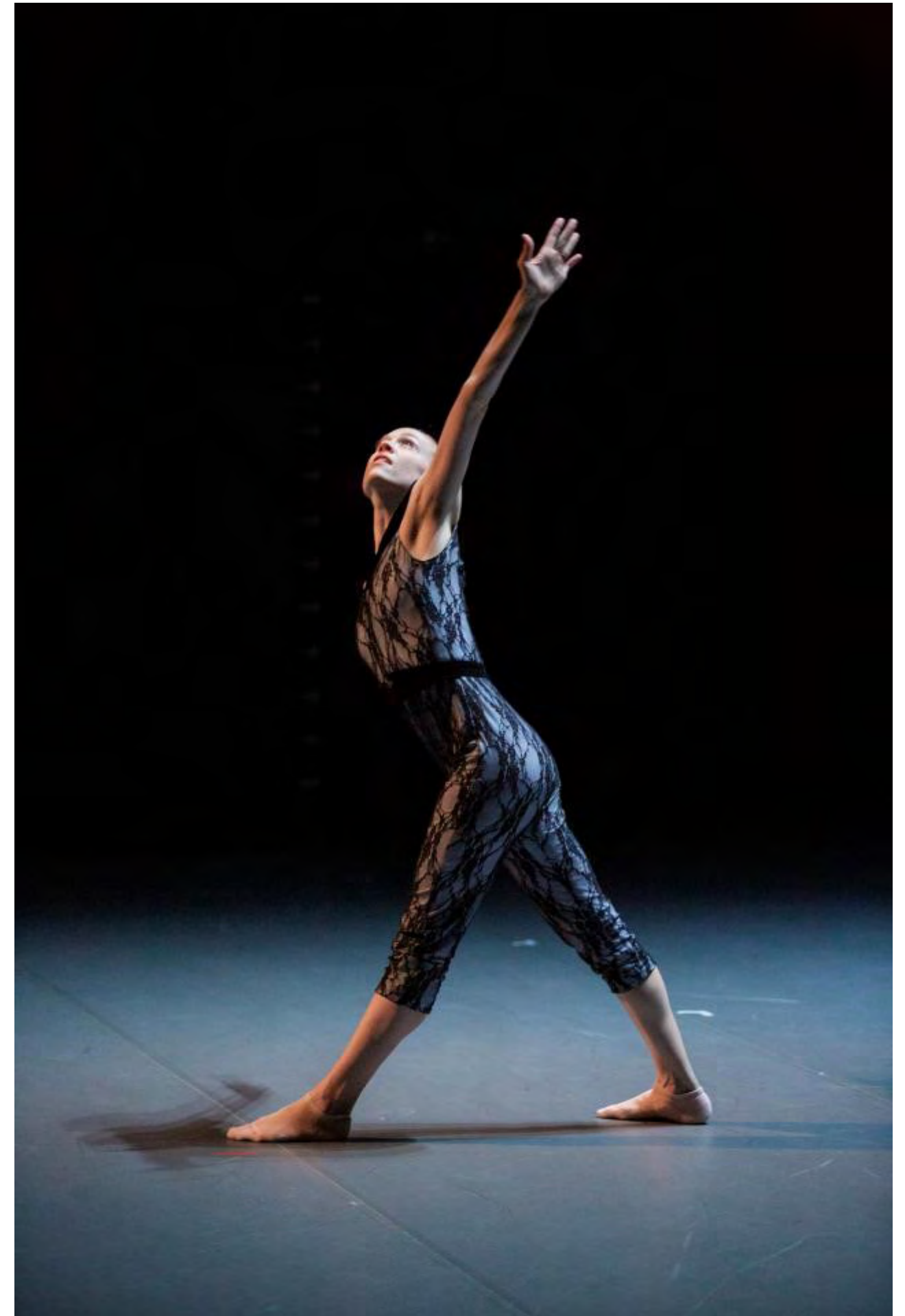
Hans Otte, Max Richter, Tom Waits & Kathleen Brennan

Choreography: Alejandro Cerrudo

The 2016 Pacific Northwest Ballet premiere of Alejandro Cerrudo's *Little mortal jump* was generously underwritten by Jeffrey & Susan Brotman.

Pacific Northwest Ballet's 2021-2022 season was proudly sponsored by ArtsFund, Microsoft, and Browne Family Vineyards. Special thanks also to 4Culture, National Endowment for the Arts, The Shubert Foundation, City of Seattle Office of Arts & Culture, and The Wallace Foundation.

PNB's digital season was made possible by Katherine Graubard and William Calvin.



LETTER FROM THE EXECUTIVE DIRECTOR



At this time last year, we were stepping into our first program of a season planned around an iterative return to our pre-pandemic business model. Our performance schedule, PNB School classes, and operations all prioritized health and safety measures, but could not have fully anticipated the protracted impact of the Delta and Omicron variants of Covid. Unlike so many of our ballet peers, we dodged cancellations of *Nutcracker*, presented planned runs of three mixed bills, *Roméo et Juliette*, and *Swan Lake*, and managed a few, wonderful in-person events. Then PNB's turn for cancellations arrived, in the very last Rep of the season, ALL THARP, where we lost the entire first weekend of shows to Covid. Fortunately, and in collaboration with all of our union partners, our stellar marketing team was able to produce a digital version of every program in the 21-22 season. The theme of our lockdown season, *Dance Happens Everywhere*, continued to resonate as dance fans, literally everywhere, enjoyed PNB performances at home. If you were among that enthusiastic and far-flung base, thank you for tuning in.

Along with many other organizations, federal Covid relief funds have buoyed and sustained PNB since 2021. As audiences slowly return to venues like ours, and revenues remain below pre-pandemic levels, our work now focuses on balancing careful stewardship of these subsidies with presenting ambitious programs on stage for our just-opened 50th Anniversary Season, as well as seasons to come.

PNB, of course, has always served our community beyond the stage. Over the course of our 2021-22 season, we continued moving the organization forward in the expansive spaces of Inclusion, Diversity, Equity, and Accessibility, which you'll hear us refer to as "I.D.E.A." We accomplished an ambitious learning agenda with consultant Steve Sneed and our organization-wide I.D.E.A. committee. As noted by Peter, nearly 300 employees, faculty, Company dancers, Professional Division students, and Board / Advisory Council members participated in the *Race: The Power of an Illusion* curriculum and

discussions designed to create shared understanding around the priority of IDEA at PNB. This year's new hires will begin their work with this curriculum on October 19. We also continued to highlight community voices through our *PNB is Listening* series (available on our YouTube channel), and we introduced PNB's first-ever sensory-friendly performances of *Nutcracker* and the family matinee of *Beauty & The Beast*. We also joined the nationwide, ballet-focused Cultural Competence and Equity Coalition with monthly meetings and content resources around modeling inclusive leadership, evaluating aesthetic and tradition, understanding new and better ways of looking at community engagement, and much more. Other meaningful steps included creating a monthly I.D.E.A. newsletter, adding a gender-neutral restroom, and installing bright welcome signage in our buildings. Signs feature a very common PNB refrain: "We're so glad you're here."

Speaking of our buildings, PNB facilities tend to be a complex subject, and work this past season on how to improve and update our spaces at the Phelps Center was no exception. Our presence in a heavily landmarked, rapidly evolving City of Seattle park with competition for space and resources added complexity to the programmatic needs assessment we've conducted over the past two years. Then we learned that the route of the West Seattle / Ballard Link Extension of Sound Transit was being planned to cut right through the Seattle Center campus. Advocacy efforts thus turned toward PNB's response to Sound Transit's Draft Environmental Impact Statement, as well as ongoing meetings and tours with city and county leaders. Once again we find ourselves in collaboration with other arts and culture organizations, lobbying for the sustainability of our large, interdependent, and diverse sector in the face of major external challenges. All of us have never been more clear in our understanding of the value of adaptation, the need for constant advocacy and the importance of a thriving arts and culture sector in a healthy city. With your participation in the arts, you strengthen our voices and our influence.

You'll learn much more about these major developments in the months to come. Suffice it to say, PNB has much at stake as we contemplate our future. Yet, at 50, we have the most important attributes in place to embrace all that comes our way: Among them, Peter's compelling program choices and the addition of Kiyon Ross to our excellent artistic leadership team, a magnificent company of dancers, phenomenal musicians, highly skilled costume artisans and production teams, a renowned PNB School faculty and staff, a dedicated, supportive Board of Trustees and Advisory Council, and an administrative team that has done and can do anything to make the PNB experience and our work in the community the best in any company, anywhere. Thank you for being part of our first 50 years and we hope you'll join us for the next chapter of PNB's story.

A handwritten signature in black ink, reading "Ellen Walker". The signature is fluid and cursive, with a large, stylized "E" and "W".

Ellen Walker, Executive Director

INCLUSION, DIVERSITY, EQUITY, AND ACCESSIBILITY AT PNB



Pacific Northwest Ballet recognizes the historical and present inequities in ballet and is committed to shifting the culture in our Company and art form through meaningful action and reflection. We strive to be an arts organization that reflects our community and is relevant, accessible, and welcoming to everyone.

Throughout PNB's history, we have understood the importance of how classical arts organizations show up in, and for, their communities. Since 2014, PNB has moved this commitment front and center, dedicating more time and resources to ensure a more inclusive, diverse, equitable, and accessible PNB and ballet field.

The Pacific Northwest Ballet (PNB) Inclusion, Diversity, Equity, & Accessibility (I.D.E.A.) Committee is a cross-functional committee that values equity, diversity, inclusion, and accessibility as guiding organizational principles. We seek to reflect and embrace our community and to provide a welcoming and inclusive environment in which artists, audiences, students, staff and volunteers of all backgrounds learn, collaborate, and participate for the benefit of all. The work of the I.D.E.A. Committee directly supports PNB's mission to inspire, engage, and educate through dance. Diversity and diverse perspectives advance PNB's ability to achieve new standards of excellence in every aspect of its organization. PNB seeks to build a fully-inclusive, anti-racist, multicultural organization, creating space for shifting perspectives that reflect our industry's continual evolution.

The I.D.E.A. Committee is dedicated to:

- Building PNB artist, board, faculty, staff, student, and volunteer awareness about issues relating to race and other forms of diversity.
- Promoting learning opportunities for all artists, board, faculty, staff, and students around equity, race and other forms of diversity, and inclusion.
- Integrating equity learning and work throughout all facets of the organization.
- Filtering PNB's programs, practices, and policies through a lens that is sensitive to issues around equity, race and other forms of diversity, accessibility, and inclusion.
- Developing and implementing an annual I.D.E.A. Action Plan.
- Centering underrepresented perspectives across the organization through community collaboration and professional consultation.
- Cultivating authentic relationships and engagement with under-invited communities in our work outside of PNB.
- Inviting feedback relating to I.D.E.A. work from artists, board, faculty, staff, student and families, volunteers, audiences, and community partners.
- Ensuring our artistic output is reflective of our community.
- Maintaining public transparency by I.D.E.A. Committee updates and statements to our website and annual report.

I.D.E.A. INITIATIVES AT PNB

PROVIDING SENSORY-FRIENDLY PERFORMANCES, SENSORY-ACCESSIBLE SEASONS, AND ADAPTIVE DANCE CLASSES.

- In December 2021 PNB proudly presented our first sensory-friendly performance of *The Nutcracker* for nearly 1,000 attendees, in partnership with nonprofit Sensory Access and led by Seattle Arts Fellow Gabriela Shutt. This performance provided ASL interpretation, free fidgets for all attendees, a social narrative, and movement/quiet stations throughout McCaw Hall designed to provide a range of sensory experiences so everyone was able to participate. A sensory-friendly *Beauty and the Beast* performance followed in March 2022, with live captions.
- In 2021/2022, PNB worked with Sensory Access to create sensory-accessible seasons, providing sensory-processing resources year-round for attendees. These resources include 8 sensory kits that may be checked out at any performance, 7 sensory guides to assist patrons during a performance, 2 social narratives, and training for front of house staff. This work has led PNB to qualify for certification through the International Board of Sensory Accessibility, a process we are in now with hopes to be fully certified for our 2022/2023 season.
- Dance for PD® was created in 2001 in Brooklyn, New York, and born out of a collaboration between Mark Morris Dance Group and Brooklyn Parkinson Group. This internationally-acclaimed program is now offered in over 300 communities and 23 countries. Dance for PD® classes aim to empower people to explore movement and music in creative, stimulating and enjoyable ways. STG Dance for PD® (Parkinson's disease) at PNB is a partnership between PNB and Seattle Theatre Group, with classes taking place once per week, 32 weeks per year. Classes are taught by professional teaching artists and accompanied by live music. What makes PNB classes especially unique is that the curriculum includes movements and themes that align with PNB repertoire onstage at the time of the class.


Start of the Show

The lights in the theater will go darker when the show is about to begin. Sometimes people will clap when the show is about to start because they are excited to see the show.

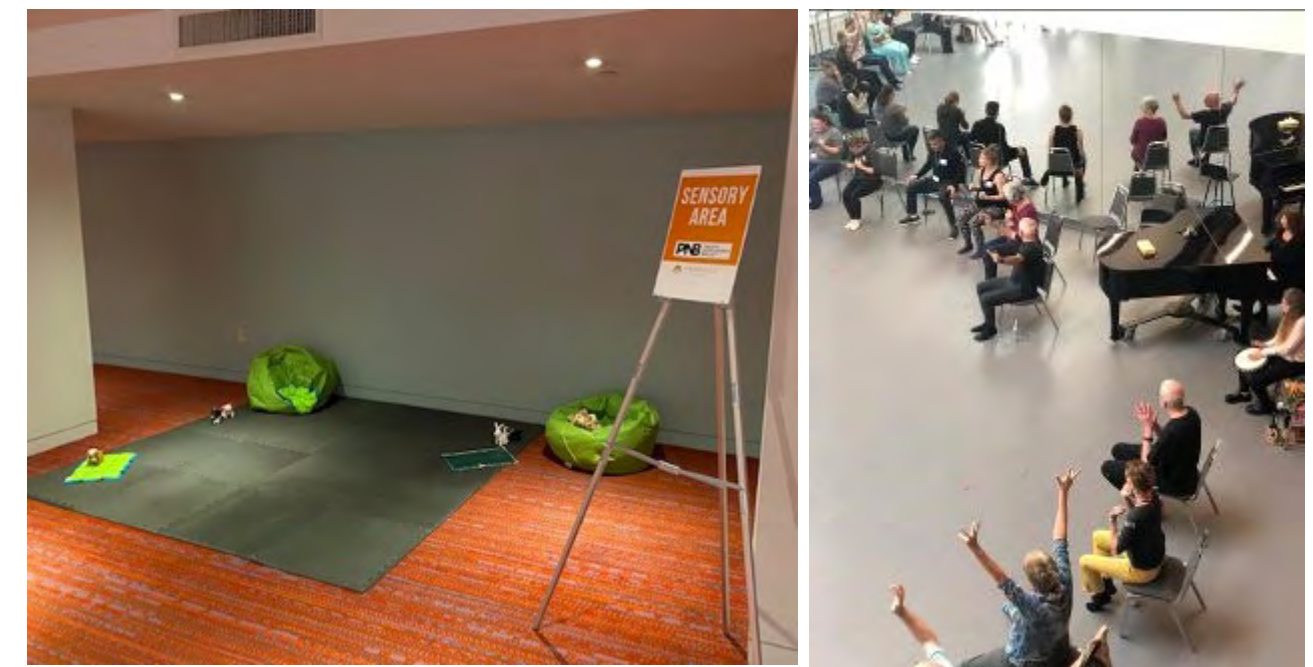
People also sometimes clap:

- after a solo or pas de deux (duet)
- at the end of the first act before the intermission (short)
- at the end of the show (long clapping)

You can clap at these times too if you want to. If the clapping is too loud you can put on headphones or cover your ears. additional headphones are available in the lobby. When people really like a show, they might stand up at the end while they are clapping. This is called a **Standing Ovation**.



SENSORY ACCESSIBILITY



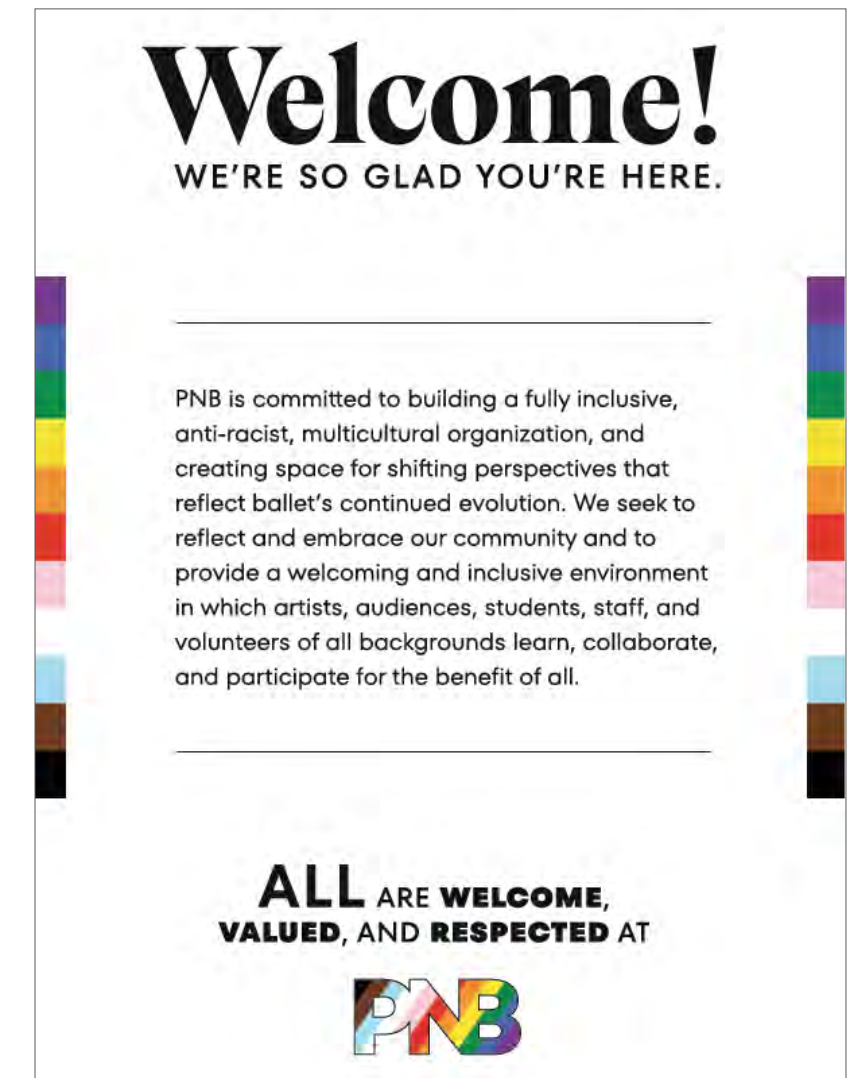
I.D.E.A. INITIATIVES AT PNB

CONSISTENT, MEANINGFUL SUPPORT OF ALL DANCERS IN BOTH OUR COMPANY AND SCHOOL:

- Opportunity for cisgender and nonbinary dancers to dance all roles (including pointe roles).
- Change in reference to pointe shoes and flat shoes vs. "men's technique".
- Removal of gender references in casting, class, and in printed materials.
- Inclusion of dancer pronouns in performance programs.
- Established gender neutral rest room.
- Changing costuming to incorporate flesh-toned tights and shoes for most ballets; continued work with ballet trusts to push for flesh-toned tights and shoes in all ballets.
- Membership in The Equity Project, a three-year, nationwide (20 company) cohort working to increase the presence of Black dancers in ballet led by Dance Theatre of Harlem, International Association of Blacks in Dance, and Dance/USA.
- Membership in the Cultural Competency and Equity Coalition, a cohort of ballet companies working to become fully anti-racist, multicultural institutions.
- Organizational commitment to serve as LGBTQ+ safe space.

SELECTED ADDITIONAL I.D.E.A. WORK (NOT COMPREHENSIVE)

- Regular, required trainings since 2018 (Respectful Workplace, Racial Equity for Organizational Transformation, Unconscious Bias, and Social Identity workshops) Organization-wide trainings in 2021-22 around the docu-series *Race: The Power of an Illusion*. By May 5, 2022, more than 250 PNB employees, faculty, Board, and students had participated in this curriculum.
- Partnering with Seattle Opera, Seattle Symphony, and Classical KING FM on the Seattle Arts Fellowship. PNB's 2021-2022 Fellow, Gabriela Shutt, was part of a cohort of BIPOC future arts leaders. Her focus is community engagement across departments, including building sensory-friendly and accessible PNB programming.
- Creating a dedicated I.D.E.A budget line item; collaborating cross-departmentally to secure funding for continued growth of this work.



STAFF

ARTISTIC STAFF

Peter Boal, *Artistic Director*
Anne Dabrowski, Otto Neubert*, Giovanni Villalobos, *Rehearsal Directors*
Alejandro Cerrudo, *Resident Choreographer*
Sarah Kolat, *Executive Assistant to Peter Boal*
Emil de Cou, *Music Director/Principal Conductor*
Christina Siemens, *Principal Company Pianist*
Josh Archibald-Seiffer, *Conductor/Company Pianist*
Laure Struber, *Company Pianist*
Rodger Burnett*, *Orchestra Personnel Manager*
Stephen Barnes*, Jeff Junkinsmith, Emi Oguri, Megan Phillips, Natasha Pinelis, Katja Rubin, Shelley Sutton-Bolton, Don Vollema, Annastasia Workman, *Company Class Pianists*
Mona Butler*, *Orchestra Librarian*
Jon Blake, *Librarian*
Sheila Dietrich*, *Archivist*

PRODUCTION

Norbert Herriges, *Technical Director*
Reed Nakayama, *Resident Lighting Design Coordinator*
Sandra Barrack, *Production Stage Manager*
Alexandria Wommack, *Stage Manager*
Jeffrey Stebbins*, *Master of Properties*
Alan Hiskey*, *Flyman*
Greg Davis, *Master Carpenter*
Cole Erin Guinn, *Assistant Carpenter*
Michael Grogan, *Master Electrician*
Jonathan Hackett*, *Production Electrician*
Jay Gosselin*, Kevin Krist*, *Properties Assistants*
Jan Harvey-Smith*, *Master Scenic Artist*
Scott Bennet, Jennifer Law, *Scenic Artists*
Dominic Iacono, *Lighting Technician*
Toby Basiliko, *Sound*
Jeremiah Gibson, Jordan Whiteley, *Projectionists*
Jim Austin*, Tammy Martin, *Followspot Operators*
Jack Taylor, *Videographer*

COSTUME SHOP

Christine Joly De Lotbiniere, *Costume Shop Manager*
Madeleine DeGracia, *Wardrobe Manager*
Meleta Buckstaff, *Assistant Costume Shop Manager*
Rita Brown, *Interim Wardrobe Head*
Sherri J. Thompson*, *Wardrobe Assistant*
Patrick Stovall, *Men's Cutter, Wardrobe Lead*
Denise Barry, *Draper*
Luna Pham, *Draper*
Pauline Smith*, *First Hand*
Rob Newton, *Costume Technician*
Wendy Oberlin, *Dyer/Painter/Crafts*
Amara Madeo, *Milliner/Crafts*
Shelby Rogers, *Hair and Makeup Lead*
Christy Granquist, Jenn Oaster, Carrie Steficek, *Wardrobe Leads*
Heather Andress, Samantha Tapola, Christy Kazimour, Carrie Rees, *Wardrobe Maintenance*
Michael Notestine, Bel Callero, Ron Erickson, Mary Seasly, LeAnn Hittenberger, *Dressers*
Samantha Tapola, Kevin Lloyd, Teresa O'Leary, *Stitchers*

EXECUTIVE OFFICE

Ellen Walker, *Executive Director*
Kristen Ramer Liang, *Executive Assistant to Ellen Walker & Board Liaison*
Terrie Flaming, *Director of Human Resources*
Craig Big Eagle, *IT Manager*
Jason Darland, *IT Desktop Technician*

FINANCE

David Thorpe, *Chief Financial Officer*
Kaleriya Maslyak, *Accounting/Payroll Associate*

OPERATIONS

Brian Zenk, *Maintenance Supervisor*
Lauren Kirchner, *Office Manager & COVID Supervisor*

COMPANY OPERATIONS & TOURING

Kiyon Ross, *Director of Company Operations*

MARKETING & ADVANCEMENT

Lia Chiarelli, *Chief Marketing & Advancement Officer*
Lexi Clements, *Director of Marketing*
Liza Madison, *Director of Development/Donor Engagement*
Carrie Mood Okada, *Director of Development/Individual & Planned Giving*
Gary Tucker, *Director of Communications*
Jen Shealy, *Tessitura Database Manager*

DEVELOPMENT

Caitlin Bell, *Institutional Giving Manager*
Jackson Cooper, *Major Gifts Manager*
Will Moser, *Foundation and Government Relations Manager*
LiLi Pigott, *Annual Fund Manager*
Nickolas Clark, *Donor Information Coordinator*
Leah Dooley, *Gift Officer*

MARKETING & COMMUNICATIONS

Lindsay Thomas, *Videographer*
Noel Pederson, *Marketing Manager*
Cassandra Lea-Saxton, *Senior Manager of Digital Experience*
Maris Antolin, *Marketing Coordinator*
Kate Farwell, *Manager of Amusements*

PATRON SERVICES

Max Frauel, *Patron Experience Manager*
Megan Weigley, *Patron Experience Manager*
Amanda Mulvihill, *Patron Services Manager*
Julie Jamieson, *Group Sales*
Julia Gyory, Eric Jeffords, Kayleah Lewis, Zoe Meadows-Sahr, Davis Wolfe, *Patron Service Representatives*

PACIFIC NORTHWEST BALLET SCHOOL

Peter Boal, *Director*
Denise Bolstad*, *Managing Director*
Abbie Siegel*, *School Principal*
Meg Potter, *Assistant Principal*
Wendy Casper, *Assistant to the Managing Director*
Andrea Abercrombie, *School Supervisor*
Naomi Glass, *DanceChance Manager*
Eva Stone, *NEXT STEP Program Coordinator*
David Jensen, *Summer Residence Director*
Kristen Carder, *Registrar*
Rachel Henderson, *Assistant Registrar*
Sarah Fogarty, *Phelps Center Front Desk Administrative Assistant*
Nora Henriksen, Lindsay Merz, Mairi Nicol, Katherine Straight, Asta Wylie, *Administrative Assistants*

FACULTY

Marisa Albee*, Peter Boal, Nancy Crowley, Ikolo Griffin, Dana Hanson, Dane Holman, Carrie Imler, Jonathan Porretta, Meg Potter, Abbie Siegel*, Jennifer Turner, Le Yin

Lucie Baker, Emily Coello, Naomi Glass, Susan Gorter, Akoiya Harris, Claudia Houston-Aragon, Deborah Kenner, Miriam Landis, Ayumi Matsuda, Dina McDermott, Samantha Myer, Louise Nadeau*, Kaori Nakamura, Kiyon Ross, Eva Stone, Marjorie Thompson, Julie Tobiasson*, Malia Vassar, Amber Willett

PNB Company dancers, *Guest Faculty*

SCHOOL ACCOMPANISTS

Don Vollema, *Music Staff Coordinator*
Jessica Andrews, Daniel Arthur, David Barela, Stephen Barnes, Darren Bartolo, Evan Captain, Jihun Cho, Tatyana Dadayeva, Oleg Dusaev, Eva Huentelman, Youngjin Joo, Jeff Junkinsmith, Marina Katsel, Adam Kessler, Vincent Newton, Emi Oguri, Michael Owcharuk, Gary Palmer, Megan Phillips, Elizabeth Purswell, Angela Rinaldi-Gribas, Katja Rubin, Shelley Sutton-Bolton, Annastasia Workman, Marina Yeremeyeva, Josh Zimmerman

COMMUNITY EDUCATION

Shannon Barnes, *Director*
Ann Marie Caldwell, *Programs Manager*
Gabriela Shutt, *2021-2022 Seattle Arts Fellow*

Ciara McCormack Greenwalt, Robert Moore, Hayley Shannon, Ayako Shapiro, Suzanne Singla, Ellen Tejera, Adriana Wright, *Teaching Artists*

Becca Baggenstoss, Devin Bews, Noah Colbeck, Jordan Furrow, Nick Helgeson, Max Holmberg, Jeremy Jones, Adam Kessler, *Accompanists*

PNBCONDITIONING STAFF

Melissa Brown, Carol Elsner, Teresa Hanawalt, Deborah Kenner, Dina McDermott, Kayoko Price, Suzanne Singla, Tara F. Stepenberg, Marjorie Thompson, Jennifer Turner

THERAPY

Steven Anderson, MD, *Consulting Physician*
Boyd Bender, *Director of Physical Therapy Services & Physical Therapist*
Elizabeth Rigsbee, Lisa Van Loben Sels, *Physical Therapists*
Lori Brewington, *Physical Therapy Assistant*
Theresa Benkman, Christopher Kagen, *Massage Therapists*

CONSULTANTS

Henry Lu, P.T., A.T.C., *Physical Therapist*
Josh Spell, MSW, LICSW, *Therapist*
Monica Van Winkle, MS, RD, *Dietician*

SPECIAL COUNSEL

Perkins Coie, *Employment Law*
MacDonald Hoague & Bayless, *Immigration Law*
Moss Adams LLP, *Auditors*

Pacific Northwest Ballet dancers are represented by AGMA—the American Guild of Musical Artists, AFLCIO.

Pacific Northwest Ballet Orchestra is represented by the PNB Orchestra Players Organization.

Stage Crew is represented by I.A.T.S.E., local #15.

Wardrobe work is performed by employees represented by Theatrical Wardrobe Union #887, I.A.T.S.E.

Stage Draperies: I. Weiss, New York.

PNB is an EOE

*25 or more years with PNB



Beyond **BALLET**

NOVEMBER 5—7, 2021
DIGITAL STREAM NOVEMBER 18—22, 2021

BEYOND BALLET featured a triple-bill of dance works by three acclaimed choreographers: the combination of Ulysses Dove's mournful *Dancing on the Front Porch of Heaven*, Jessica Lang's haunting *Ghost Variations*, and the PNB premiere of Alonzo King's *The Personal Element* brought unmatched emotion, expression, and musicality to audiences at McCaw Hall.

DANCING ON THE FRONT PORCH OF HEAVEN: ODES TO LOVE AND LOSS

Music: Arvo Pärt (*Cantus in Memory of Benjamin Britten*, 1977)

Choreography: Ulysses Dove

GHOST VARIATIONS

Music: Clara Schumann (*Three Romances*, Op. 11, 1839, I. Andante; Scherzo No. 2 in C minor, Op. 14, after 1840) and Robert Schumann (*Ghost Variations*, 1854, Theme, Variations II & V; *Liederkreis*, Op., 39, No. 5 "Mondnacht", 1840, arranged by Clara Schumann, 1872–1874)

Choreography: Jessica Lang

THE PERSONAL ELEMENT (PNB Premiere)

Music: Jason Moran

Choreography: Alonzo King

The 2006 Pacific Northwest Ballet premiere of Ulysses Dove's *Dancing on the Front Porch of Heaven* was generously underwritten in part by Glenn Kawasaki and Winona & Robert Nilan. The 2020 world premiere of Jessica Lang's *Ghost Variations* was principally supported by Bob Benson and Deidra Wager, with additional support by H. David Kaplan. The 2021 Pacific Northwest Ballet premiere of Alonzo King's *The Personal Element* was sponsored by the Jane Lang Davis New Works Fund, Bob Benson, and Glenn Kawasaki.

Pacific Northwest Ballet's 2021-2022 season is proudly sponsored by ArtsFund, Microsoft, and Browne Family Vineyards. Special thanks also to 4Culture, National Endowment for the Arts, The Shubert Foundation, City of Seattle Office of Arts & Culture, and The Wallace Foundation.

PNB's digital season was made possible by Katherine Graubard and William Calvin.

LETTER FROM THE CHAIRMAN OF THE BOARD



30 months into a running a ballet company during a pandemic, I'd almost say, we've got the hang of it now. We've rolled with the ups and downs of the times and I dare say in many ways we are stronger, more creative, and more nimble. The return to live performance in September 2021 was a joy for all of us, and we know for you as well.

While our entire 20/21 season was virtual, we were thrilled to be able to perform live for the entire 21/22 season, which included zero *Nutcracker* disruptions and one missed weekend of our June rep. Not bad, PNB! The Phelps Center (PNB's rehearsal home and home to our school) came back to life – a masked life – but still, dancing bodies abounded and life began to feel less odd.

Having endured our third season of Covid, I think we're almost at a point where we could write a manual on managing an arts organization during a pandemic. But all that knowledge, courage and pretty seamless execution really has been built under the guidance of Peter Boal, Ellen Walker, and the broader management team of PNB. They executed while the board supported, guided, advocated, fundraised, and cheered. If you look around the US at the many recent changes in leadership of many prominent ballet companies, I'm grateful that ours has stayed steadfast and grounded here at 301 Mercer Street. Your ballet company has a cohesive and experienced team that consistently shows up to work their magic and leave us spellbound. As a board, our staff inspires us every day to do and give our best, and I know our Association members appreciate them as well.

It feels so joyous to be here in September and launching our 50th season at McCaw Hall. Ours is a rich history with visionary leadership: Janet Reed, Kent Stowell, Francia Russell and Peter Boal. That is a lot of consistency over 50 years. The commitment to our three pillars of full lengths, the works of George Balanchine, and contemporary new works remains unchanged and we're thrilled that our entire season brings you some of each. Unchanged as well is the support and love this community has shown PNB over 50 years. For those of us who have been around PNB for a while, we remember with fondness, former dancers, production staff, administrative staff, and trustees who are no longer with the company but left indelible memories and friendships for us. We are forever grateful for our past and as excited as ever for our future.

But we never, ever, forget that we dance for you! Your love and support of this company is what has allowed us to stay the course of these past 36 challenging months. PNB is central and vital to this community and Seattle would not be the same without us. Thank you for being with us tonight and throughout this celebratory 50th year.

A handwritten signature in black ink that reads "Aya Hamilton".

Aya Hamilton, Chairman

BOARD OF TRUSTEES

OFFICERS

Chairman – Aya Hamilton ^{2 3}
President – Lynne Graybeal
Treasurer – Dan Kingston
Secretary – Len Sorrin
Assistant Treasurer – Maria Mackey
Assistant Secretary – Lynn Lindsay
Foundation Board Chairman - Peter Horvitz ^{2 3}
Immediate Past Chairman – David Hadley ^{2 3}
Chairman Emeritus – Sheffield Phelps*

EX OFFICIO OFFICERS

Artistic Director: Peter Boal ¹
Executive Director: Ellen Walker ¹

VICE PRESIDENTS

Board Development – Vivian Schwab
Governance – Joan Fitzmaurice ³
Education – Sue Buske
Marketing/Public Relations – Sara Jones
Fund Development – Peter Horvitz ^{2 3}

EX OFFICIO TRUSTEES

Young Patrons Circle: Jessica Zen ¹
PNB STARS: Courtney Barker ¹

GOVERNING BOARD OF TRUSTEES

Donna Barnett
Carl Behnke ²
Susan Brotman ²
Sue Buske
Jon Conte
Sharon Falkner
Jerald Farley
Joan Fitzmaurice ³
Stephen E. Fuhs
Lynne Graybeal
Levke Haas
David Hadley ²
Aya Hamilton ^{2 3}
W. Daniel Heidt ²
Toni Hoover
Peter Horvitz ^{2 3}
Sara Jones
Mariana Keller
April Kiebert
Dan Kingston
Megan Kirley
Terrel Lefferts
Josh Lieberman
Lynn Lindsay
Maria Mackey
Frederick W. McDonald
Carol Neiman
Jenna Owens
Kristin Pastoriza
Tom A. Puentes
Barbara Ries
Vivian Schwab
Leonard Sorrin
Elizabeth Stokes
Jennifer Thompson
Aimee Truchard
Stephanie True
Natasha Lalji Verjee

Lisa Wahbe
Connie Walsh
Jodi Wong
Leslie Yamada
Shirley Zaic

ADVISORY COUNCIL

Marleen Alhadeff
Courtney Bear
Elisabeth Bodal
Brooke de Boutray
Melissa Chadwick
Margaret Dell’Osso
Elizabeth Dougherty
Caitlin Echelbarger
Kathy Alvord Gerlich
Adiel Guinzburg
Kalen Holmes
CathyBeth Hooper
Jill Jackson
Pamela Johnson
Glenn Kawasaki
Mimi Richards
Catherine Ries
Maria Schmeiser
Judy Schoenecker
Alesha Shemwell
Mel Sturman
Peggy Swistak
Christina Tanner
Gillian Toledo
Karen Van Til
Deidra Wager

TRUSTEES EMERITI

Norma Cugini*
Jane M. Davis*
Wendy Griffin ^{2 *}
Cathi Hatch ²
Travis Keeler ³
Arthur H. Mazzola ^{2 *}
Jane McConnell
Joe Norman ³
Rick Redman
Francia Russell
Kent Stowell
Carol Wright

BOARD OF TRUSTEES LIFE FELLOWS

Patty Barrier
Kay Baxter
Robert R. Braun, Jr.
Ron Elgin
James A. Elias*
Don C. Franklin
David F. Hill ³
Catherine Hobi Hawes
John Iverson ^{3 *}
Gail James
Jim Judson *
H. David Kaplan
Dr. Susan Lindsay
Maria Postnikoff-Downing
Marsha Rich Ingham
Sharon Richardson
Susan R. Richey
Cynthia Stroum
Linda Warson
David B. Winder ^{2 3}
Linda Wyman

¹ Advisory/Ex Officio
² Past Chairs
³ Past Presidents
*Deceased



NOVEMBER 26—DECEMBER 28, 2021
DIGITAL STREAM DECEMBER 20—28, 2021

After a long, unexpected hibernation, Pacific Northwest Ballet's sparkling production of *George Balanchine's The Nutcracker*® returned to the stage for live performances in November 2021. Featuring Tchaikovsky's timeless score performed by the world famous PNB Orchestra, PNB Company dancers in show-stopping roles, bright young stars from the PNB School, unique-to-Seattle sets and costumes by Ian Falconer (creator of *Olivia the Pig*), and McCaw Hall's lobbies decked out with the season's best photo ops, PNB's production is a holiday treasure for audiences young and old.

Music: Peter Ilyich Tchaikovsky
Choreography: George Balanchine

Principal sponsorship support for the 2015 PNB premiere of *George Balanchine's The Nutcracker*® with original scenic and costume design by Ian Falconer, was made possible through the generosity of Pam & Dan Baty. Additional major support was provided by Patty Edwards, Carl & Renee Behnke, and Peter & Peggy Horvitz, along with donations from over 900 other individuals. Star Sponsor is Chihuly Studios. The works of George Balanchine performed by Pacific Northwest Ballet, including *George Balanchine's The Nutcracker*®, are made possible in part by The Louise Nadeau Endowed Fund.

Pacific Northwest Ballet's 2021-2022 season was proudly sponsored by ArtsFund, Microsoft, and Browne Family Vineyards. Special thanks also to 4Culture, First Republic Bank, National Endowment for the Arts, The Shubert Foundation, City of Seattle Office of Arts & Culture, and The Wallace Foundation. PNB media sponsorship provided by *The Seattle Times*. PNB's digital season was made possible by Katherine Graubard and William Calvin.





PNB SCHOOL

595

Founded in 1974, Pacific Northwest Ballet School is recognized as one of the top three ballet training institutions in the United States. Under the direction of Peter Boal, the School provides a complete, professional curriculum to hundreds of students at The Phelps Center and The Francia Russell Center (over 1,100 students pre-Covid). As PNB School continued to recover from Covid shutdowns, 595 students returned for in-person ballet classes.

49

In September 2021, PNB welcomed 41 Professional Division students—23 new students and 18 returning, hailing from 19 US states and 1 Canadian province.

1,127

In January – February 2022, administrators and faculty auditioned 1,127 students for Summer Course via in-person auditions in 20 cities around the US and 6 virtual Zoom auditions. In addition, 11 artistic directors from around the US visited PNB and attended classes to observe Professional Division students.

\$445K

PNB School awards scholarships purely based on need and is able to award partial or full tuition scholarships to most students who apply. PNB School awarded a total of \$445,718 in tuition assistance in 2021-2022 to 147 students at its Seattle and Bellevue locations, including the academic year, Summer Course, and DanceChance.

210

Out of 434 accepted students, nearly 150 students registered for PNB’s 2022 Summer Course at the Phelps Center, representing 32 states, 3 countries, and 121 ballet schools.

2021-2022 ACADEMIC YEAR STUDENTS

300 SEATTLE

295 BELLEVUE

595 TOTAL

Creative Movement, Pre-Ballet, Levels I-VIII, Professional Division



PNB School students performing onstage at McCaw Hall at School Performance. Photo © Lindsay Thomas. 17



PNB School students in *Beauty and the Beast*. Photo © Angela Sterling.



I.D.E.A. INITIATIVES IN PNB SCHOOL AND COMMUNITY EDUCATION

CULTIVATING THE NEXT GENERATION OF DANCE-MAKERS WITH A ONE-OF-A-KIND CHOREOGRAPHY PROGRAM FOR THE YOUNG WOMEN OF PNB SCHOOL, NEW VOICES.

- Since its inception in 2018, New Voices has encouraged hundreds of young women enrolled in PNB School to take an early interest in ballet choreography. Through New Voices, we can ensure that students gain insight and experience in choreography and the choreographic process.

PROVIDING EQUITABLE ACCESS TO HIGH-QUALITY DANCE EDUCATION THROUGH PNB SCHOOL & COMMUNITY EDUCATION PROGRAMS.

- DanceChance was created in 1994 by PNB School Founding Director Francia Russell to improve equity and access in classical ballet training. Partnering with Seattle Public Schools, this bedrock youth program invites students demonstrating unique attributes for classical ballet to study at Pacific Northwest Ballet School free of charge, dependent only upon students' potential and interest in dance. DanceChance aims to enrich the lives of each participant through the opportunity to study classical ballet, to cultivate a diverse School and Company, and to train and nurture the next generation of dancers.
- The 25-year old flagship program of PNB's Community Education department, DISCOVER DANCE has served 10 partner public schools in Seattle Public Schools & Bellevue School District. Partner schools boast between 9-24 years of participation. DISCOVER DANCE serves 30 classrooms of 1st-6th graders annually, and is fully inclusive; ALL students from each grade-band participate in 10-12 week in-school residencies, with an average of 17 contact hours per classroom. DISCOVER DANCE aligns with educational standards set by the Office of the Superintendent of Public Instruction; residencies focus on creative movement & student-created choreography, culminating in performances at PNB's venue McCaw Hall twice annually (November & March). Students keep journals throughout the residency, and PNB also provides educator and family resources to continue learning after the residency ends. Family communication materials are provided in 13 languages and tailored to the primary languages of each partner school.
- 13% of Seattle Public School students are eligible for Special Education Services. PNB's Community Education programs provides access and equity to DANCE TO LEARN and DISCOVER DANCE curriculum for students with disabilities through a modified curriculum, identifying and facilitating student supports, collaboration with school and district staff, and ongoing training for PNB staff and teaching artists.



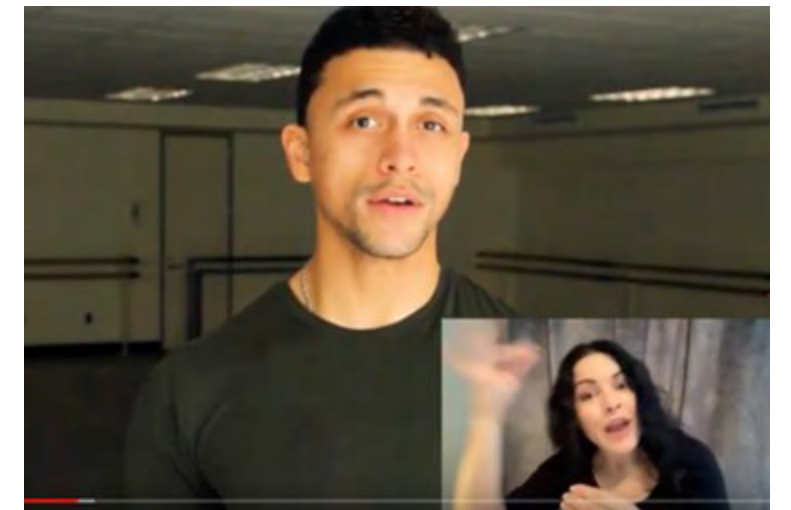
I.D.E.A. INITIATIVES AT PNB SCHOOL AND COMMUNITY EDUCATION

CONSISTENT, MEANINGFUL SUPPORT OF ALL DANCERS IN PNB SCHOOL & COMMUNITY EDUCATION:

- Live captioning for Family Matinee performances.
- DanceChance mentorship program.
- Updated dress code to allow flesh-colored tights and shoes in all levels.
- Adaptive dance classes via STG Dance for PD[®] and Seattle Public School partnerships.
- Expanded summer course audition locations in order to reach a more diverse student population.
- Established New Voices and New Voices II for Levels VII and VIII, choreography classes for young women.
- Serving as LGBTQ+ safe space.
- Mentorship program with company dancers for all advanced students.
- Opportunities for gender and non-gender conforming students to dance and train on pointe.
- Removal of gender references in class and in printed materials.
- Inclusion of pronouns for students on all registration forms.
- All-day racial equity training for all School faculty, staff, and accompanists.
- Diversity training/discussion specific to PNB School faculty members.
- Implementation of anti-harassment and anti-racist statement for all students.
- Progress toward greater diversification of faculty with new hires and guest teachers.

NEW MEASURES IN 2021-2022 INCLUDED:

- Membership in the Cultural Competency and Equity Coalition, a cohort of ballet companies working to become fully anti-racist, multicultural institutions.
- Established gender neutral rest room.
- Removal of gender references in casting.
- Pronoun pins provided for all staff and students.
- Organization-wide trainings in 2021-22 around the docu-series *Race: The Power of an Illusion*. By May 5, 2022, more than 250 PNB employees, faculty, Board, and students had participated in this curriculum.



COMMUNITY EDUCATION PROGRAMS

PNB’s Community Education team held its first in-person residencies since March 2020 in eight classrooms at three partner schools, with residency materials provided in seven languages (Amharic, English, Mandarin, Oromo, Somali, Spanish, and Vietnamese). The team also continued with its virtual workshops, residencies, and behind-the-scenes field trips to engage as many students as possible. Through PNB’s partnership with TAT LAB, Community Education staff trained 25 arts educators in a seven-month professional development program centered on instructional design and social justice in arts education.

2021-2022 PROGRAM HIGHLIGHTS

Thanks to an anonymous gift, **over 4,800** Seattle Public School students at 13 partner schools were invited to access the digital stream of *George Balanchine’s The Nutcracker*®. Students also received a study guide provided in the seven languages listed above. Through three virtual workshops families could join in dance activities, learn about the story and costumes, and meet PNB School Professional Division student dancers.

Partnerships: Seattle Public Schools, Bellevue School District, Highline School District, ArtsWA, Office of the Superintendent of Public Instruction, Seattle University, Spectrum Dance Theater, Seattle Children’s Theatre, Book-It Repertory Theatre, and Seattle Repertory Theatre, Washington State Teaching Artist Training Lab (TAT LAB).

26 Schools served in 2021-2022

18 DISCOVER DANCE Residency Partner Schools

7 Teaching artists

2 Accompanists

1 Digital performance, featuring 8 classrooms at 3 schools, PNB Company excerpts, and ASL interpretation

1,000 Attendees at PNB’s first sensory-friendly *Nutcracker* performance

300+ Students attended three free virtual *Nutcracker* pre-performance workshops

1 Educator Night at ALL THARP for DanceChance, DISCOVER DANCE, DANCE TO LEARN, and Dance in Physical Education partners

UNLIMITED Creative Advantage All-Access Streaming of PNB’s Community Education video series

24 Years serving Seattle, Bellevue, and Highline

AUDIENCE EDUCATION

While audience education programming wasn't completely back to pre-Covid levels, some programs began to return in-person while PNB continued to build on its innovation during our Dance Happens Everywhere digital season. A new digital dance film festival premiered in spring 2022 and eight new PNB is Listening videos were released during the 2021-2022 season.

21,000 **BALLET TALK: PRE-PERFORMANCE LECTURES**
Ballet Talk, led by Education Programs Manager Doug Fullington, has been shared in podcast form since the 2018-2019 season, with over 21,000 listeners to-date on multiple platforms. PNB released six episodes of Ballet Talk during the 2021-2022 season with over 3,300 downloads.

1,600 **MEET THE ARTIST**
Meet the Artist returned in-person to the Nesholm Family Lecture Hall for the 2021-2022 season. These post-performance interviews with choreographers and dancers engaged over 1,600 attendees.

2,100 **DIGITAL DANCE FILM FESTIVAL**
In April 2022, PNB premiered its first annual digital dance film festival, with six dance films selected by a diverse panel of industry professionals. The films—Places, Glitch, Hollow Hearts, Survival, GALLOP APACE, and All Eyes Forward—garnered over 2,100 views.

6,000 **PNB IS LISTENING**
PNB is Listening is an ongoing collaboration between PNB artists and staff, designed to highlight diverse voices within our community. Launched in June 2020, in 2021-2022 this series featured panels including Latinx Artists, Moms Who Dance, Mental Health Awareness, and more. Nearly 6,000 viewers tuned into PNB is Listening during the 2021-2022 season.





Noelani Pantastico and James Yoichi Moore in Jean-Christophe Maillot's *Roméo et Juliette*. Photo © Angela Sterling.

Roméo et Juliette

FEBRUARY 3—12, 2022
DIGITAL STREAM FEBRUARY 24—28, 2022

Music: Sergei Prokofiev (Romeo and Juliet, Op. 64, 1935-1936)
 Choreography: Jean-Christophe Maillot

From *West Side Story* to *Twilight*, Shakespeare's great romance seems always to find new interpretation, and its tale of forbidden love has been especially enticing to the dance world. Peter Boal was so mesmerized by Jean-Christophe Maillot's *Roméo et Juliette* when he attended its New York debut in 1999, that it became his first full-length acquisition for PNB as artistic director.

Supporting sponsors for PNB's 2016 production of Jean-Christophe Maillot's *Roméo et Juliette* were Bank of America, Van Cleef & Arpels and Neiman Marcus, and the Norman Archibald Charitable Foundation.

The 2008 PNB premiere of *Roméo et Juliette* was generously underwritten by Dan and Pam Baty. PNB is also grateful to Dan & Pam Baty for their leadership support to underwrite the creation of scenery and costumes for this production in 2013.

Roméo et Juliette is a co-production with Atlanta Ballet.

Pacific Northwest Ballet's 2021-2022 season was proudly sponsored by ArtsFund, Microsoft, and Browne Family Vineyards. Special thanks also to 4Culture, First Republic Bank, National Endowment for the Arts, The Shubert Foundation, City of Seattle Office of Arts & Culture, and The Wallace Foundation. PNB's digital season was made possible by Katherine Graubard and William Calvin.

LETTER FROM THE FOUNDATION CHAIRMAN OF THE BOARD



The PNB Foundation was formed in 1996 to hold endowment gifts and bequests exclusively for the benefit of Pacific Northwest Ballet and Pacific Northwest Ballet School. The PNB Foundation is governed by its own board elected by PNB Board of Trustees.

The Endowment provides ongoing annual support that allows PNB to create engaging performances and programs, attract and retain the best artists, and pursue vital education and community education initiatives with confidence. Gifts to PNB's Endowment serve as an investment in PNB's future as well as an enduring tribute to donors' generosity.

Last year the Foundation received \$1,370,000 in new gifts and bequests, and gifted \$900,000 to support PNB. Our investments decreased 14.8% in value due to declines in the stock market in 2022. Over the last 10 years, investment return has been 6.8% compared to our policy benchmark return which was 6.2%.

Since its formation in 1996, the Foundation has provided over \$15.8 million to support PNB's artistic and educational programs.

The endowment funds are strategically invested to increase the value of the portfolio and to provide a dependable, growing source of annual operating support. The Foundation investments are valued at \$21,850,000, and are diversified among investment categories: 79% in Equities, 9% in Real Assets such as natural resources and real estate, and 10% in Fixed Income .

The PNB Foundation Board meets quarterly to monitor the investments, review the performance of investment managers, and determine whether to make changes to the allocation of funds or the managers.

You can support PNB's Endowment by making a gift of cash or securities. If this is not the right time for you to make an outright gift to the Endowment, please consider naming PNB as a beneficiary in your will or trust. By helping to build our Endowment, you will keep PNB dancing in perpetuity.

Thank you for your dedication to and belief in Pacific Northwest Ballet.

A handwritten signature in dark ink, appearing to read "P. A. Horvitz", written in a cursive style.

Peter Horvitz, Foundation Chairman

ENDOWMENT ASSETS

\$26,849,000

INVESTMENTS*	\$21,850
PLEDGES*	\$40
CHARITABLE REMAINDER UNITRUST*	\$ 1,871
<hr/>	
TOTAL ENDOWMENT*	\$23,761

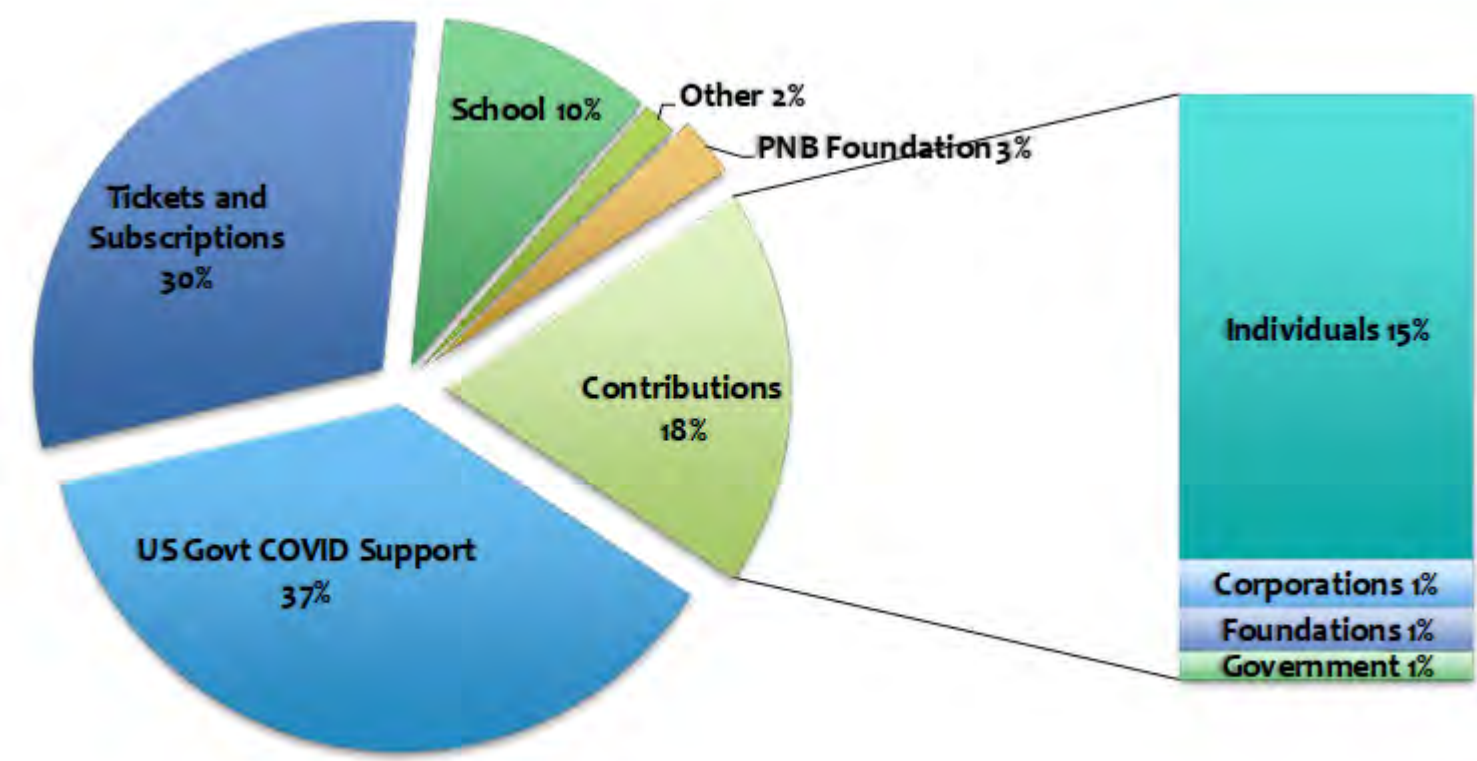
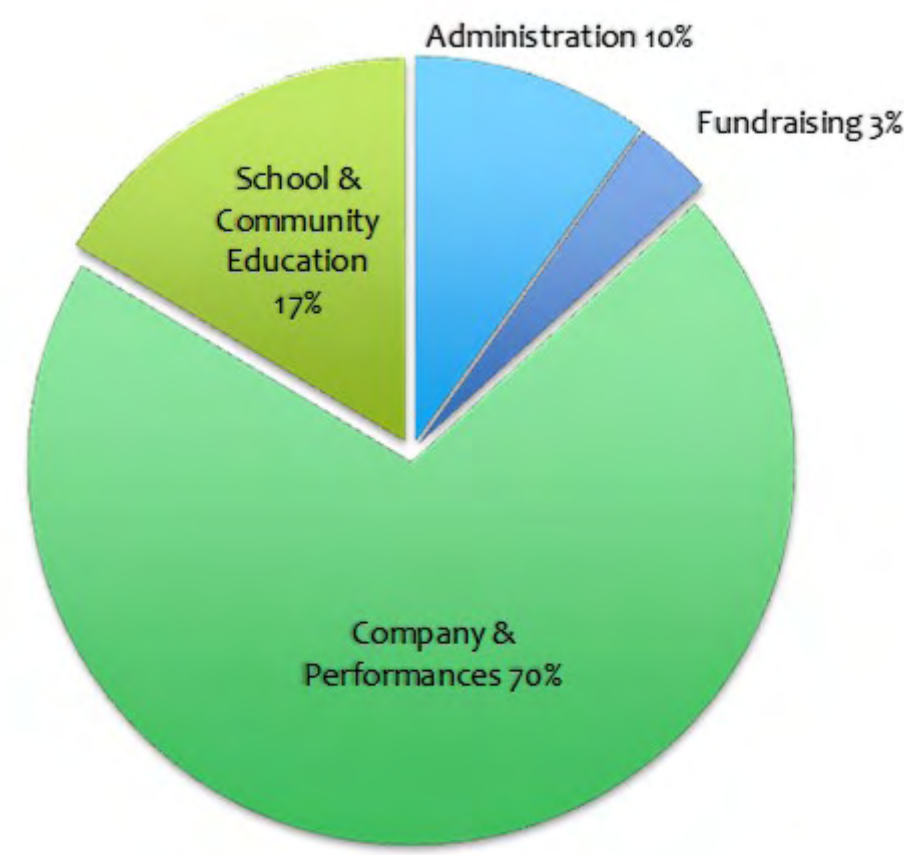
*IN THOUSANDS

CONSOLIDATED STATEMENT OF ACTIVITIES

For year ending June 30, 2022

OPERATING EXPENSE: \$26.31 MILLION

OPERATING REVENUE: \$32.69 MILLION



PLOT POINTS

MARCH 18—27, 2022

DIGITAL STREAM MARCH 31—APRIL 4, 2022

***BEFORE I WAS* (World Premiere)**

Music: Macie Stewart & Sima Cunningham (formerly known as OHMME)

Choreography: Robyn Mineko Williams

***THE TIMES ARE RACING* (PNB Premiere)**

Music: "USA I-IV" from the album *America* by Dan Deacon

Choreography: Justin Peck

CAUGHT

Music: Robert Fripp (1984, 1981)

Choreography: David Parsons

PLOT POINT

Music: Bernard Herrmann (from *Psycho*, 1960), with additional soundtrack
by Owen Belton

Choreography: Crystal Pite

Major support for PLOT POINTS was provided by Once Upon a Dance and the Nesholm Family Foundation. The PNB World Premiere of Robyn Mineko Williams' *Before I Was* is generously underwritten by Tim and Megan Kirley. The 2007 Pacific Northwest Ballet premiere of David Parsons' *Caught* was generously underwritten by Marcella McCaffray. *Caught* is maintained in the active repertory of Parsons Dance through generous support from the Jim and Linda Ellis Foundation. The 2017 Pacific Northwest Ballet premiere of Crystal Pite's *Plot Point* was generously underwritten by Jeffrey* & Susan Brotman. The PNB premiere of Justin Peck's *The Times Are Racing* is generously underwritten by Susan Brotman.

Pacific Northwest Ballet's 2021-2022 season was proudly sponsored by ArtsFund and Microsoft.

Special thanks also to 4Culture, National Endowment for the Arts, The Shubert Foundation, City of Seattle Office of Arts & Culture, and The Wallace Foundation.

PNB's digital season was made possible by Katherine Graubard and William Calvin.

PNB media sponsorship provided by *The Seattle Times*.

*Deceased



DONOR RECOGNITION

Pacific Northwest Ballet remains committed to bringing our audiences the best in dance and educational programming. Whether onstage or off, our community knows they can depend on us for excellence and inspiration. Likewise, we depend on our community to keep us dancing—and we are so grateful for your continued support.

PNB's 2021-2022 season was a joyous return to in-person performances, education programs, and special events. Ticket sales only cover 70% of our annual operating expense in a typical year, and even less during these Covid recovery years. Our success is truly made possible by the generosity and encouragement of our many donors. We salute you for your commitment and support.

CORPORATE GIVING

\$439,000

\$251,313 IN-KIND

Major corporate sponsors included ArtsFund, The Boeing Company, First Republic Bank, Freed of London, Microsoft Corporation, and Safeco. Corporate gifts are received in several forms, including corporate foundation gifts, in-kind donations, and sponsorships.

ANNUAL FUND

\$5,536,982

4,758 DONORS

Annual Fund contributions support every facet of PNB, including the New Works Initiative, Community Education Programs, DanceChance, PNB School, scholarships, and general operations. In the 2021-2022 season, PNB received generous support from donors in 33 US states and nine countries.

FOUNDATION & GOVERNMENT GIVING

\$460,000 FOUNDATION

\$238,000 GOVERNMENT

Major foundation donors included the Grousemont Foundation, the Jerome Robbins Foundation, M.J. Murdock Charitable Trust, the National Endowment for the Arts Foundation, Nesholm Family Foundation, The Seattle Foundation, The Shubert Foundation, and government contributions are designated towards both specific programs and general operating expenses.

CORPORATE & INSTITUTIONAL GIVING

\$100,000 & ABOVE

ArtsFund
The Shubert Foundation

\$75,000-\$99,999

M.J. Murdock Charitable Trust
Microsoft Corporation

\$35,000-\$74,999

Anonymous Fund of The
Philadelphia Foundation
First Republic Bank
Glen Kerry Trimble Fund of
Seattle Foundation
Nesholm Family Foundation
Office of Arts & Culture Seattle
Anonymous

\$20,000-\$34,999

Freed of London
Grousemont Foundation
Jerome Robbins Foundation
National Endowment for the Arts
Precept Wine*

\$10,000-\$19,999

The Boeing Company
Joshua Green Foundation
Jubilation Foundation Fund of
Tides Foundation
Moss Adams*
Perkins Coie LLP
Providence St. Joseph Health
Safeco Insurance Foundation

\$5,000-\$9,999

Bellevue Arts Commission
Goldman, Sachs & Co.
Google
Peg & Rick Young Foundation
scan|design Foundation by Inger &
Jens Bruun
Washington State Arts Commission
Anonymous (2)

\$4,999 & BELOW

Amazon
Cordell, Neher & Co
Delta Dental
Poncho Legacy Fund of
Seattle Foundation
Princess Grace Foundation-USA
SuperGraphics*
Smith & Jones*
Talking Rain*
U.S. Bank

**In-Kind Support*



ENDOWMENT

\$1,000,000 AND ABOVE

Jeffrey* & Susan Brotman
Kreielsheimer Foundation
David Michaud
Anonymous

\$500,000-\$999,999

Elisabeth Bottler*
Estate of Ruth Hoffman
Peter & Peggy Horvitz
Dr. Joe G. Norman, Jr.
Estate of Althea Stroum
Arlene A. Wright
The Bagley Wright Fund
Talented Students in the Arts
Initiative, a collaboration of the
Doris Duke Charitable Foundation
and the Surdna Foundation
Anonymous

\$250,000-\$499,999

Mr. & Mrs. William* J. Dunn
Estate of Gerard L. Hanauer
Estate of Helen C. Kloess
Estate of Betty Kreager
Estate of Gloria Peck-Neils

\$150,000-\$249,999

Carl & Renee Behnke
Estate of Louise Blanks
Jane & Robert Cremin
John & Carmen* Delo
Laurie A. Griffith
William Randolph Hearst Foundation
Glenn Kawasaki
Estate of Arthur H. Mazzola
Anonymous (2)

\$100,000-\$149,999

Patrice & Kevin Auld
Estate of Louise V. Blanks
Estate of Mrs. Jack Cluck
Jane M.* & David R. Davis
Aya Stark Hamilton
Jeremy & Jacqueline Jaech
Henry* & Mary Ann James

Spencer A. Johnson &
Braiden Rex-Johnson
H. David Kaplan, In Memory of
Dr. Stanley M. Pier
Travis & Suzanne Keeler
Catherine S. Leschen
Roger F. Miller
Estate of Marywilde Nelson
The Norcliffe Foundation
Mr. & Mrs. Tom A. Puentes
Rick & Jennifer Redman
John & Elizabeth Rudolf
John F. & Julia P.* Shaw
Allen & Kathleen Shoup
Kayla Skinner*
Sophie Sussman*
Estate of Jack D. Wulfekuhle

\$50,000-\$99,999

Chap & Eve Alvord
Apex Foundation
Robert M. Arnold*
Estate of Edward S. Brignall
Estate of Evangeline Edwards
Estate of Erma Erickson
Jane Erskine*
Reed & Maren Erskine
Estate of George Franz
Mrs. Paul S. Friedlander*
Robin Gainey & Jerry Sanford, Jr., In
Memory of Jerome G. Sanford, Sr.
Natalie Gendler*
John Graham Foundation
W. Daniel Heidt & Michele B. Heidt
Estate of Pauline Hood
Bruce & Carol Hosford
Estate of Susanne F. Hubbach
Jim* & Diana Judson
Frederick W. McDonald
Estate of Shirley Callison Miner
Margaret Perthou-Taylor*
Jeanne Ellen Tweten & James W. Leslie
Estate of Frankie Wakefield
Estate of Barbara L. Weinstein
Ron & Carolyn Woodard
Carol Wright

\$25,000-\$49,999

The Kenneth and Marleen Alhadeff
Charitable Foundation
Jerry* & Rita Anches
Sharon & Jay Ballantine
Patty & Jimmy Barrier
John & Kay Baxter
Rebecca & Jack* Benaroya
Benjamin Bevis*
Mr. & Mrs. Robert R. Braun, Jr.
Sally S. Cahill Brookbank
Mr. & Mrs. Anson Brooks, Jr.
Ralph E. Bruno*
Estate of Cordelia Burns
Dale & Leslie Chihuly
Cheryl Clark & Stephan Coonrod
Clise Properties, Inc.
Gail Cottle & Reynold Brown
Alex* & Norma* Cugini
Estate of Trudel Dean
Derdick Trust
Patty Edwards
Joan Fitzmaurice
Eliza Flug
Susan E. Foster & Maurice J. Piro
William Franklin
Estate of Merrill Gerstel
Mr.* & Mrs.* James S. Griffin
David & Cheryl Hadley
Mike & Janet Halvorson
Ross Hartling, MD & Johnese Spisso
Cathi & Ken* Hatch
Estate of Anne Haugen
Catherine Hobi Hawes
Luke & Gail Helms
David F. Hill & Barbara M. Hyland-Hill
Kalen & Sean Holmes
Moe & Susan Krabbe
James A. Kraft & Dominique Posy
Firoz & Najma Lalji
Dr. Frank & Lynn Lindsay
Michael & Barbara Malone
Marcella McCaffray
Audrey McCoy
MCM a Meisenbach Company
Carol & Paul Neiman

Laura J. Peterson
In honor of our parents, Sheffield &
Patricia Phelps
James* & Sherry Raisbeck
Dr. Mack & Susan Richey
John & Sarah Rindlaub
Mrs. John S. Robinson*
Jan Rogers
Jon & Judy Runstad
John Charles & Mary R. Sellen-Klinker
Jan & Jim Sinegal
DJ Smith-Brooks
Estate of Phillip Soth
Delphine & Charles Stevens
John Stokes & Laurie McDonald
Harry C. & Joan Stonecipher
Kent Stowell & Francia Russell
Dr. Michael & Peggy Swistak
Doug & Janet True
Toby & Linda Warson
Richard L. Weisman
Albrecht Widmann & Kenneth Barlow
Wyman Youth Trust
Leslie & Tachi* Yamada
Anonymous (3)

\$15,000-\$29,999

Mrs. Phyllis B. Clark*
Barry & JoAnn Forman
Ruth & Bill Gerberding
Dr. Hellmut & Marcy Golde
Adele Golub
Gerald & Lyn Grinstein
Mark & Julie Hutcheson
Skip & Jackie Kotkins
Lisa Kroese
Diane & Gordon Kuenster
Helen L. Luchs*
Dennis & Linda Mitchell
Estate of Beatrice R. Olson
Heidi Orr
Estate of Opal J. Orr
June Milette*
Cynthia Phelps*
Mr. R. Stewart Phelps
Barbara Prestrud, In Memory of
Mr. & Mrs. Louis K. Bye

Lynn Ries
Estate of Mary Schneider
Donna & Joshua Taylor
Wayne Thurman
Anonymous

\$10,000-\$24,999

Erik & Sherilyn Anderson
Betty L. Blakeney
Tom & Jeannie Blank
Bill & June Boeing
Diane Canaday & Daniel Hesse
Tatiana Davidson
Mrs. Mildred K. Dunn*
Jim & Ann Elias
Dr. Stephen & Beverly Fuhs
Mr. & Mrs. George M. Galpin
G. Keith & Naomi Grim
Estate of Mary S. Helmick
John* & Marli Iverson
Estate of Ralph C. Jacobson
Craig & Karen Kennedy
Lee Kraft Cressman &
Paul R. Cressman
Joan T. Lasersohn
Patricia & Wilfrid Loeken
Keith & Mary McCaw Family
Foundation
Galen Mohr*
JPMorgan Chase & Co.
Estate of Nancy Nuckols Keefe
Lea Anne & Randall Ottinger
John Parchem & Barbara Lycett
Safeco Corporation
Estate of Amy L. Sidell
PNB STARS
George* & Nelly Sofer
Paula Rose*
Craig Tall
Estate of David Wagoner

*Deceased

The following named funds have been created in the PNB Endowment:

Alexis Phelps Dancer’s Support
Endowed Fund
The Althea Stroum Production Fund
Arlene A. Wright DanceChance
Endowment Fund
Benjamin Houk Scholarship for Young Men
Carmen Elizabeth Delo Endowed Fund for
Education and Outreach
Catherine S. Leschen Endowed
Scholarship Fund
Frank Hobi Endowed Scholarship Fund
Frankie Ladley Wakefield Endowment for
Ballet Educational Programs
Helen Kloess Endowed Scholarship Fund
Jane McConnell Scholarship
Janet Reed Scholarship Fund
Kreielsheimer Artistic Development Fund
Laurie A. Griffith Endowed Scholarship Fund
Louise Nadeau Endowed Fund
Lucinda Hughey Endowed Scholarship Fund
Northwest Endowed Fund
Patricia Barker Endowed Scholarship Fund
Patricia Phelps Endowed Scholarship Fund
Paula Rose Endowed Scholarship Fund
Roger F. Miller Endowed Fund
Spencer A. Johnson & Braiden Rex-Johnson
Principal Dancers’ Endowed Fund
Dr. Stanley M. Pier Endowed
Scholarship Fund
Tom & Gretchen Puentes Endowed
Scholarship Fund
William Randolph Hearst Foundation
Endowed Education & Outreach Fund



Kent Stowell's *Swan Lake*

Made possible by the E.L. Wiegand Foundation

APRIL 15—24, 2022
DIGITAL STREAM MAY 12—16, 2022

Music: Peter Ilyich Tchaikovsky (Op. 20, 1875 – 1876)
 Choreography: Kent Stowell

Pacific Northwest Ballet continued the celebration of its return to live performances with Kent Stowell's *Swan Lake*. Every element of this production was crafted to keep audiences on the edge of their seats, from the masterful choreography, stunning costumes by Paul Tazewell (*Hamilton*), and off-kilter scenic design by Ming Cho Lee, to the undeniably iconic score brought to life by the world famous PNB Orchestra. The tale at its heart – a classic tragedy of good versus evil – is considered by many to be the greatest classical ballet of all time, and provides the ultimate challenge for ballerinas: the dual role of Odette, trapped in the body of a white swan until an oath of true love sets her free; and Odile, the “Black Swan” temptress.

Kent Stowell's *Swan Lake* was made possible by the E.L. Wiegand Foundation. Special thanks to presenting sponsor ArtsFund, and major sponsor Susan Brotman.

Pacific Northwest Ballet's 2021-2022 season was proudly sponsored by ArtsFund and Microsoft. Special thanks also to 4Culture, National Endowment for the Arts, The Shubert Foundation, City of Seattle Office of Arts & Culture, and The Wallace Foundation. PNB's digital season was made possible by Katherine Graubard and William Calvin. PNB media sponsorship provided by The Seattle Times.

RÉVÉRENCE SOCIETY

Donald & Jeanne Adams
David Akiyama
Rev. Mary Petty Anderson
Sena Baron
Patty & Jimmy Barrier
Amy Baskerville
Carl & Renee Behnke
Janice Berlin
Sharon Bidwell
John H. Bowen
Robert R. Braun, Jr.
Philip Brazil
Susan Brotman
Lorna Brown
Mr. Peter Brown &
 Ms. Janet McKinnon
Carol A. Burch
Diane Burgess
Daniel Burkert
Susan Y. Buske
Dorrienne Chinn
Ferrell Nathan Conn
Gail A. Cottle
Paul Craggs
Tavia Crowder
Judith Cushman & Bob Quick
Michael W. Dabney
Philip & Lenore Defliese
John Delo
Sheila C. Dietrich
Jennifer Doscher
William J.* & Sandra B. Dunn
Virginia Earnshaw
Mrs. Patty Edwards
James & Ann* Elias
Kristina Erickson

Thomas & Jane Fadden
Robert & Natalie Findlay
Kate Forster
Russell & Nancy Fosmire
Deborah Gates
Courtney & John Geist
Gail Goralski
Inger A. Goranson
Gene Grantham
Lynne Graybeal & Scott Harron
Lila Greengard
Susan & Bill Grinstein
Mr. & Mrs. James M. Halverson
Aya Stark Hamilton
Jan Harper
Phyllis Harper
Cathi & Ken* Hatch
Ms. Amy J. Haugerud
Joann Haugerud
Catherine Hobi Hawes
W. Daniel Heidt & Michele B. Heidt
Klaus and Joaquenia Heinrich
Katie Holland
Paula Hopping
Peter Horvitz
Roy L. Hughes
John E.* and Marli Iverson
Tom* & Gail James
Robert C. Jenkins
Ms. Karlene Johnson
Pamela Johnson
Spencer A. Johnson &
 Braiden Rex-Johnson
Barbara A. Johnston
H. David Kaplan
April & Steven Kiebertz

Ken & Claudia Kilbreath
Debby Kim
Bruce & Carol Koch Household
Rocke R. Koreis & Candy J. Lee
Joan T. Lasersohn
Dr. Frank* & Lynn Lindsay
Ms. Penny Lorenz
Ms. Grace Lynch
Mr. David Mattson
Mr.* & Mrs. J. Daniel McConnell
Frederick W. McDonald
Edward McGuirk
Janet McKinnon
David Michaud
Curt & Mary Mikkelsen
Roger F. Miller
Sara Mockett
Dr. Armin & Beverly Mohr
Ann D. Molitor
Lisa & Jonathan Morris
Phyllis Moss
Carol & Paul* Neiman
Marywilde Nelson*
Judy & Arnie Ness
Dr. Joe G. Norman, Jr.
Ms. Margaret Ordornia
Mr. & Mrs. Richard Parsell
William & Carol* Parsons
Richard & Jean Patton
Ann Phillips
Jean E. Phillips
Dennis Pierce & Eddie Edmondson
James* & Sherry Raisbeck
Richard C. Redman
Ms. Christina Rich
Mimi Richards

Lynn Ries
Michael Righi
Royce & Maura Roberts
Ann Lyda Rogers
Mary K. Rogers
Kathryn McPherson Roon
Dr. H. Martin Rosa
Cornelius & Penny Rosse
JoAnne Hardt Rudo
John Rudolf
Michael Ann Sagin
Ms. Stephanie V. Salamon
Barbara Sando
Judith Schoenecker &
 Christopher Myers
Sam Sebesta
Tony Sepanski &
 Ann Logan Phillips
Mr. & Mrs. Michael Sheetz
Sue Ann Smith
W. Dyanne Stepanek
Elizabeth Stokes
Dr. Michael & Peggy Swistak
Richard Tait
Katherine Thiry
Wayne Thurman
Dr. Darlene A. Townsend
Beni Turan
Nicholas Utzinger & John Rochford
Sharon Van Valin & Richard Tait
Elaine Vona
Deidra Wager
Rebecca Walker
Pam & Bill Wanser
Mr. Mike Waters
Cathy & Ross Wiggins

Mr. John C. Wilson, Jr.
Ms. Jodi Wong
Mr. Leonard Young
Evelyn Zabo
Shirley Zaic
Anonymous (8)

*Deceased

MEMBERS OF THE BARRE

ARTISTIC DIRECTOR’S CIRCLE
\$100,000+

Apex Foundation
Dr. & Mrs. Ronald J. Beck
Susan Brotman
Patty Edwards
Peter & Peggy Horvitz
Jeanne Kanach
Once Upon A Dance
James* & Sherry Raisbeck
Tom* & Connie Walsh
T.R. Ko
Anonymous (2)

CHAIRMAN’S CIRCLE
\$50,000 - \$99,999

Chap & Eve Alvord
Bob Benson
Susan Y. Buske
Carl & Renee Behnke
Megan & Tim Kirley
Marcella McCaffray*
Jolene McCaw & Family
Deidra Wager
Leslie & Tachi* Yamada
Anonymous

PRESIDENT’S CIRCLE
\$25,000 - \$49,999

Lyndall Boal
Jim Boshaw & Laura Mair
Jim & Birte Falconer
Joan Fitzmaurice
Dr. Stephen & Beverly Fuhs
Lynne E. Graybeal & Scott Harron
Aya Stark Hamilton
Toni Hoover & Al Nettles
Glenn Kawasaki
Firoz & Najma Lalji
Sharon Lee
Dr. Frank* & Lynn Lindsay
Dr. Joe G. Norman, Jr.
PNB STARS
Lynn Ries & Rod Proctor
Leonard Sorrin & Kay Deasy
Dr. Michael & Peggy Swistak
Anonymous

REHEARSAL DIRECTORS’ CIRCLE
\$10,000 - \$24,999

Ariel Fund
Bill Ballard
Donna & Anthony Barnett
Jon & Kathleen Blake
Tom & Jeannie Blank
Jack Blaylock & Jane Evans
Dr. Thomas & Terrill Boyce
Daniel & Margaret Carper
Foundation
Jon R. Conte & Margaret Kerrigan
John & Carmen* Delo
John Delo & Elizabeth Stokes
William J.* & Sandra B. Dunn
Jerald E. Farley
William E. Franklin
Ian Friedland
Katharyn Alvord Gerlich
Levke Haas
David & Cheryl Hadley
W. Daniel & Michele B. Heidt
Anne Holmes
Kalen Pieper Holmes
CathyBeth & Steven W. Hooper
Marilyn Lee Huey &
Dorothy Sloan Huey*
Jill Jackson
Gail James
Sara A. Jones
Mariana & Cesar Keller
Janet Ketcham
April & Steven Kieburtz
Dan Kingston & Maureen Mooney
Joshua Lieberman
Laura Lundgren
Maria C. Mackey

Frederick W. McDonald
Carol & Paul* Neiman
Barbara Ries
Lynn Ries & Rod Proctor
Susan & Ron Runyon
Stephanie Vivian Salamon
Maria & Maximilian Schmeiser
Vivian & Jim Schwab
Judith Schoenecker
& Christopher Myers
David Shank
Adiel & Sandi Silverio
Denise Littlefield Sobel
Mel & Leena Sturman
Aimee Truchard
The True Family
Natasha Lalji Verjee
Robert & Lisa Wahbe
Ms. Jodi Wong
Anonymous (4)

PATRONS OF THE BARRE
\$7,500 – \$9,999

Marleen & Kenneth Alhadeff
Joan Hsiao & James Bromley
Sharon Falkner &
Gene Chamberlain
Melissa Chadwick
Pam & Ned Johnson
Stephanie Jung
Alan & Sharon Levy
Mary-Catherine Schugel &
Millie Chu
David & Romaine Watt

MEMBERS OF THE BARRE
\$5,000-\$7,499

Jane & Peter Barrett
Jeffrey A. Bell
Gary & Linda Blume
Kristin Bunce & Silas Beane
Collett Cox
Crissa Cugini
Bertrand & Brooke de Boutray
Phil & Lenore Defliese
Margaret A. Dell’Osso
Sheila C. Dietrich
Elizabeth & Shawn Dougherty
Donna & Robert Dughi
James & Anne Dulfer
Dr. Milton & Nancy English
Kristina M. Erickson
Anne M. Foster
Susan M. Gardner
Courtney & John Geist
Gail Goralski
Birgit Hansen
Cathi Hatch
Stephen & Marie Heil

Charlie & Lisa Herb
John* & Marli Iverson
Spencer A. Johnson &
Braiden Rex-Johnson
Renee Lund
Glenn Lux
The MacRae Family Foundation
Christina Marra & Paul M. Silver
Genevieve McClelland
James & Julie McElroy
Chelsea O’Dea
Janet Owen
John Parchem & Barbara Lycett
Richard & Jean Patton
Ms. Chris Pickles
Ellen Pottenger & Simone J. Berger
Dick & Alice* Rapasky
Christina Rich
Alesha & Dave Shemwell
Christina Tanner
Jennifer Thompson
Chris Capossela & Leigh Toner
Karen & Steve Van Til
The Art Works Charitable Fund
Xiong Wang & YuQing Zhong
Sally Anne West &
Peter Knudsen*
Lee Whiteside
Kathryn Wickham
Cathy & Ross* Wiggins
Dean A. Pollack &
Lizabeth A. Wilson
Carol Wright
Sylvia & George Zonoff

*Deceased

ALL THARP

JUNE 3—12, 2022
(NO DIGITAL STREAM)

BRIEF FLING

Music: Michel Colombier and Percy Grainger
(Country Gardens, 1918; Handel in the Strand, 1912)

Choreography: Twyla Tharp

SWEET FIELDS™ (PNB Premiere)

Music: 18th- and 19th-century American hymns by William Billings, William Walker, Abraham Wood, and Jeremiah Ingalls. Performed by The Tudor Choir, conducted by Doug Fullington.

Choreography: Twyla Tharp

WAITING AT THE STATION

Music: Allen Toussaint ("Let's," "Bright Mississippi," "Dolores' Boyfriend," "Mother-in-Law," "Don't Go To Sleep," "Fas-Fess," "I Miss You Baby," "The Mardi Gras Stomp," "Waiting at the Station")

Choreography: Twyla Tharp

Major support for ALL THARP is provided by the City of Seattle Office of Arts & Culture, Susan Y. Buske, and First Republic Bank.

Special thanks to Peter & Peggy Horvitz for their sponsorship of new costumes for PNB's 2022 performances of *Brief Fling*. Principal support for the 2013 PNB premiere of *Brief Fling* was provided by Lyndall Boal and Peter & Peggy Horvitz. The 2022 PNB company premiere of Twyla Tharp's *Sweet Fields* was principally supported by Leslie Yamada and Deidra Wager. The 2013 world premiere of Twyla Tharp's *Waiting at the Station* was generously underwritten by Peter & Peggy Horvitz.

Pacific Northwest Ballet's 2021-2022 season was proudly sponsored by ArtsFund and Microsoft.

Special thanks also to 4Culture, National Endowment for the Arts, The Shubert Foundation, City of Seattle Office of Arts & Culture, and The Wallace Foundation.

PNB's digital season was made possible by Katherine Graubard and William Calvin.

PNB media sponsorship provided by The Seattle Times.



ANNUAL FUND

CONDUCTOR'S CIRCLE
\$2,000-\$3,999

Dr. Itamar B. Abrass &
Dr. Christine K. Abrass
Ms. Kym Aughtry
Mr. & Mrs. George Bertsch
Mr. & Mrs. Keith Birdwell
The Blucher Family
Ellen C. Carnwath
Jane M.* & David R. Davis
Scott & Kim Fancher
Dr. Richard Herzberg
Marilyn Jorgensen
Christine Kimes
Seymour & Evelyn Klebanoff
Karen Koon
Gayl & Robert Krona
Ms. Sharon Lamm
Susan Louie
Renee Lund
Grace Lynch
Jennifer Morgan & Jane Ann Pullen
Thomas A. Nowak M.D
Dean A. Pollack &
Lizabeth A. Wilson
Megan & Greg Pursell
Judith Cushman & Bob Quick
Mr. Harry Reinert
Steven & Nancy Rogers
Laura & Adam Selipsky
Camille Uhler
In memory of John L. Voorhees
Maggie Walker
Xiong Wang & YuQing Zhong
Anonymous (2)

CHOREOGRAPHER'S CLUB
\$1,000-\$1,999

Deborah & Charles Adelman
Kari Anderson & Mark Pavlovic
Marie Anderson & John Mitchell
Ms. Katherine Barclay-Robertson
Dr. Barbara G. Beatty &
Dr. J. David Beatty
Ms. Ellen M. Beck
Mr. & Mrs. Michael Bellan
Sean Blakey & Kyna Foster
Capt. & Mrs. Paul Bloch
In celebration of Peter Boal &
Ellen Walker
Ms. Marcia Books
Mr. & Mrs. Ron Booth
In memory of Norma Broga
In memory of Dean K. &
Ulista J. Brooks
Lora Lee Brown
Mr. & Mrs. Donald W. Capron
Heinke Clark
Melissa Glick & Thomas Coates
Karen & Jeffrey Cone
Mr. & Mrs. Mike Creighton
Ms. Patricia E. Crockett &
Mr. Keith Johnson
Bruce Cross & Karen Kruse
Krijn & Judy de Jonge
Angela de Oliveira
Paula Diehr & Frank Hughes
Patricia Dodge
John & Chani Doggett
Emma Timmins-Schiffman &
Ronen Elad
Gary & Janice Enzmann
Pamela Fink and Michael Bevan
Ms. Dorothy M. Finley
Richard & Gloria Folsom
Mark & Jeanne Ford

Becky Forland
Mr. Frederic C. L. Fu
James Fung
Suzanne Schreiber & Robert Greco
Greenstein Family Foundation
Dr. Rena Hamburger
Lisa Hanna & Wesley Henrie
Anne & Zach Grout
Geraldine Hashisaki
Joann Haugerud
Jennie Hendrie
David Hicks & Rebecca Black
Ms. Julie Hill
Mr. & Mrs. Jonathan Himmelfarb
Gary & Jennifer Hinds
Ellen Hopkins & Erik Anderson
Paul Hopp
Mary & Mike Hudspeth
Dr. Francis P. Hunkins &
Dr. Patricia Hammill
Dr. Catherine Hunter
Joyce & Craig Jackson
Larry & Robin James
Tom Freeman & Mikala Johnson
Gilla Kaplan
Mr. & Mrs. David Kebely
Travis & Suzanne Keeler
Virginia King
Mrs. Christina H. Kirk
Mrs. Audrey S. Kirsop
Colleen Kiyonaga
Kevin Doods & Kristi Kiyonaga
Ella Kowalczyk
Ms. Michelle M. Krussel
Erika Lim
Suzy Lloyd
Marianne & Jim LoGerfo
Ms. Sylvia Lucas
John & Mara Luoma

Mr. Tom Mailhot & Ms. Betty Ngan
Ms. Anne D. Martin &
Ms. Leslie Martin Kinkade
Ms. Judith McBroom
Ms. Marguerite E. McCarty &
Mr. Paul D. Joppa
Mr. Marshall McClintock
Cheryl & Steve McConnell
M. Victoria McFall
Lesley McGalliard
Roger F. Miller
Lisa & Jonathan Morris
Maryl Nance & Liam Mundy
Martha Nalebuff & Mark Wagner
Mr. Lev Novik
David Ogden
Ms. Susan Pazina
Lenora Pearl
Ms. Kathryn Pratz
Mr. & Mrs. Douglass Raff
Suzanne & John Rahn
Sandi & Jim Reed
Steven & Fredrica Rice
Haugen Family
Erik Selberg &
Mary Kathryn Rodgers
Ms. Joy Rogers
JoAnne Rudo & Bob Bamford
In memory of Fred Sadeghi
Barbara Sando
Stephen Alley & Amy Scott
Ione Kim
Ms. Rebecca Shipley
Erika Sigmon
Leroy & Evelyn Smith
Mr. and Mrs. G. Kirk Smith
Lyle & Andrea Snyder
Ronald & Dawnelle Spaulding
Delphine & Charles Stevens
Mr. Michael Summy

Alex Rea & Akane Suzuki
Jessica Tarzan
Donna & Joshua Taylor
Clifton & Jennifer Teschke
Mimi A. Tutihasi
Toby Bright & Nancy Ward
Eugene & Marilyn Webb
Ms. Patricia A. Willits
Mr. Owen M. Winter
Tim & Tiffany Wissner
Mr. James H. Wood &
Mrs. Martha L. Shapiro
Mr. and Mrs. Herbert C. Wuensch
Ms. Tracey Yonick
In memory of Margret K. Zeller
Anonymous (13)

ANNUAL FUND

PRINCIPAL
\$500-\$999
Charles Alpers & Ingrid Peterson
Mr. Jonas Barklund
Ellen Barnhill
Ms. Margaret Bossi
Bowman Price Financial Advisors
Ms. Michelle Buhler
Chris Carlson & Lisa Roberts
Ms. Diane Charouhas
Andrew & Betty Cowan
Col. & Mrs Dennis M. Cunneen
Lorraine and Aimee Damman
Judy de Jonge
Ms. Rebecca Dean
Karen Domino
Mrs. Lynne Ellis
The Emery Family
Sharon Falkner &
 Gene Chamberlain
Ms. Donna J. Franklin
Betsy W. Geist
Ms. Patricia A. Hopps
Ms. Carol S. Ivory-Carlinae &
 Mr. Jan D. Carlinae
Joan & Bob Lawler
Mrs. Linda Leblanc
Vivian Lee
Hank Levy & Ronit Katz
Kyle & Wendy Kizzier
Drs. Philip* & Susan Lindsay
Ms. Sarah Lovejoy
Gwen Lundberg &
 David Aggerholm
Jerry L. Lundry
Marchell Mathes
Ms. Carol J. McCready-Cohn
Councilwoman C. Louise Miller &
 Mr. Stafford Miller
Julie Anderson Miller

In honor of Sheila Brunstad
Judy* & Arnie Ness
Thi Nguyen
Richard & Sally* Parks
Charles Montange &
 Kathleen Patterson
Jenny & Jeff Payne
Rachel Perlot & Jack Conger
Ms. Joanne Priebe
Everett E. Reagan
Anita Reich
Patricia S. Robbins
Cornelius & Penny Rosse
Steve & Linda Saunto
Bruce Schickler
Alice & Don Schilling
Sam L. Sebesta
Eric & Julie Shankland
Mr. & Mrs. Gary Sipple
In honor of George Vivian
Kathy Smith-DiJulio
John Snider & Todd Taketa
Ms. Diane E. Stark
Susan Schroeter-Stokes &
 Robert Stokes
Tom Sykes & Sarah Thomas
Dr. Michael P. Theisen &
 Mr. Ronald S. Jones
Mr. Epaminondas Trimis
Richard & Rosemary Tuengel
Kelly Van Gelder & Alex Shapleigh
Bruce Veale and Michelle Steffen
In honor of Ellen Walker
Laurie Weckel
Shannon Wilson &
 Mitchell Johnson
Robert & Jennifer Youngken
Tong Xu
Mr. & Mrs. Christian Zobel
Anonymous (8)

SOLOIST
\$250-\$499
Gail & William Bain
Kendall and Sonia Baker
Ms. Lauret Ballsun
Mr. Keoni Smith &
 Ms. Nola Jean Bamberry
Mrs. Mary Barrett
Ms. Margaret Berger
Barry & Vicki Betsinger
Bobbi Bild
Thomas & Carol Borda
Jo & John Borden
Philip Brazil
Suz & Katie Britt
Thomas Bruhns
David C. Brunelle
Ms. Barbara J. Burns
Karen Carlson-Iffert &
 Theresa Carlson-Iffert
Ms. Christina Chung
Barbara Cordova
Sandra Craig
Ms. Gail Crawford
David & Pat DeGroot
Ms. Linda Dorn
Mr. & Mrs. Fred Drummond
Mrs. Vasiliki Dwyer
Glenn & Bertha Eades
Joycelyn Eby
Ms. Marilyn E. Eck
Ms. Lynn Elmore
Dr. Terry B. Gernsheimer, MD
Mr. & Mrs. Jay Goldstein
Mr. & Mrs. Arthur Goodfellow
Bill & Susan Grinstein
Dr. and Mrs. Paul R. Gutowski
Ms. Gail Halpern
Karen Lane & Lloyd Hammel

Mr. Don Fleming &
 Ms. Elizabeth Hanna
Cynthia Harris
Joyce & Cecil Hayes
Julia Hecht & Ken Walkky
Klaus & Joaquenia Heinrich
Carolyne W. Howley
Ms. Judy Jacobson
Ms. Helene Kaplan
Ms. Susan Knox & Mr. Weldon Ihrig
Suzanne Kohl
Anny Kong
Andrea Koprowicz
Bill & Kathie Kreager
Ms. Mary Ann Langland
Elizabeth & Paul Leiba
In honor of Helen Leseney
Ms. Kathy Lopez
Penny Lorenz
Michael Mabrito
Maloney Family
Helen Mark
Mrs. Anne Matsen
Christopher Maurer
Joseph J. McGovern
David & Karin McKee
In honor of Aidan McKee-Bruns
Joan E. Miller
Mr. John Misko & Mrs. Kirsty Ellison
Ms. Sally Morgan
Donna Murray
In honor of musicians
Mr. Robert Mustard
Ms. Randi Nathanson
Ms. Janet B. Neumann &
 Mr. Ricardo Wenger
Dr. Elmo Newton
Ms. Susan Ostrander
Barbara & Neal Porter
Amy Pow

Deborah Ramsden
Ken Rash & Scott Ofstead
Brian & Laura Readdy
Mr. Peter R. Rimbey
Joey & Christen Robichaud
Arthur & Wendy Rodriquez
Sabra & Mark Rossman
Mr. David Russo &
 Ms. Valerie Torrens
Mr. & Mrs. Charles Sacrison
Dianne & Jeremy Salesin
Amanda Schaffer
Mr. Michael Schamens
Ms. Sandi Schildt
Shainie & Michael Schuffler
Mr. & Mrs. Donald L. Scott
Stuart & Judy Shorr
Karla Steele and Dick Siebe
Bernard & Susan Silbernagel
Mr. & Mrs. Roy Sparks
David & Jane Stockert in honor of
 Howard F. Weckel
Jane & Chuck Stonecipher
Margaret Swain & Larry Stark
In honor of Reese A. Teschke
Jeffrey Tinnea & Ann Davis
Judy Tsou & David Carlson
Julie C. Van Camp
Jim Schneidmiller & Gina Vangelos
Linda Vangelos & Stephen Kaufer
Sharon Van Valin & Richard Tait
Elsa & Art Vetter
Mr. Ernest Vogel
Rebecca Walker
Wendy & Jeff Westerlund
Karen Wetmore
Mrs. Margaret A. Whitney
Julie Williams
Ms. Judith Wilensky
Ms. Carolyn M. Wiley

Anne Willoughby Nelson
The Winter Family
Judith Woods
Dr. Sara Worden
Mr. Dave Wright
Ms. Corrie Yackulic
Marvin Yamaguchi &
 Dianne Graham
Carol Young
Dr. & Ms. Conrad Yunker
Ms. Maxine A. Zemko
Anonymous (18)

ANNUAL FUND

CORPS DE BALLET
\$100-\$250

Donald & Janna Anderson
Clayton and Barbara Anderson
In memory of Ted Anderson
Ms. Evelyn Arrigoni-Armstrong
Lauren Auerbach
Sena Baron
The Hietala Family
Mrs. Winifred M. Becker
Liudmila Beletskaya and Rouslan Beletski
Ruth and William Benfield
Tessa and Chris Bennion
Mrs. Karen S. Berry
Nicole Biglione
Stephen & Kristine Bowman
Ms. Nancy Brister
John & Gilda Brown
Bruce & Alva Butcher
S. Carton
Mr. Leroy Chadwick
Ms. Gayle Charlesworth
Ms. Daira Cilnis
Mr. Kenneth J. Cooper & Ms. Christine Sinnott-Cooper
Robert & Karen Crider
Mrs. Barbara Daugherty
Ms. Kay R. Davis
In honor of Amelia Glasnapp
Mr. Joe Denhart
Alec Donaldson
Mr. Wayne F. Doucette
Ms. Virginia Earnshaw
William Echols
JoLynn Edwards
Patricia Emmons & Shmuel Elad
Ms. Nancy C. Elliott
Ms. Irene Endresen
Marilyn Evans

Thomas & Jane Fadden
In honor of Jerry Farley
Mary Fernandez
Susan Fink
Carolyn Frankhouser
Craig Fraser
Ms. Maureen Frisch
Donn Fry & Diane Stielstra
James & Lynda Gable
Diana Gale & Jerry Hillis
Mr. & Mrs. John C. Garing
In memory of Lorraine Gershenfeld
Sachiko Glass
In memory of Shirley Harris-Lee
Duston & Kathleen Harvey
Maynard Hedegaard
Jim & Jackie Henry
Mary Himple
Brent & Nancy Hirschman
Ms. Joanne Hjort
Esther Holt & William Tonkin
Tuck Hoo
Erica Hsia
Mimi S. James
Lynn M. Janata
John & Sheryl Jardine
Susan K. Jones
Margretta Josephson
Phyllis Kaiden & Wayne Holt
William Kepper
Ms. Lorraine King
Leslee Kiyokawa
John Kloeck & Pat McWha
Kevin Koreis
Larry & Evonne Kucera
Ms. Dorothy Kulwin
Ms. Kate Lange-McKibben
Kristine A. Larson
In celebration of Las Estrellas
Mrs. Joy J. Lauderbaugh

Ken & Nanette Leaman
Esther Liu
In memory of Rita Lovington
Lenore & Don Lynch
Mr. & Mrs. Horst Mader
Heidi Madson
Eva Mannisto
Sandra Marshall
Carolyn Mawbey
Lila Woodruff May
Ms. Vicky McFarlane
Edward McGuirk
Barbara Mericle
Kristi Middleton
Marcy & J. Montgomery
Emily & Marc Mora
Ms. Lynda Morgan
Sue & Doug Mormann
Mr. Roger J. Morris
Ms. Kara Moss
Ms. Elizabeth Mountsier
Cheryl Mozena
Dee & Bob Mulford
Ms. Jean M. Murakami
Donald & Lynn Murphy
Suz & Dan Myers
Ms. Kate Nelson
Berl Nussbaum
Kim & Kevin Oakes
Debra O'Connell
Sherry Ogur
Maciek E. Orczyk & Iwona Strycharska-Orczyk
Ms. Sara Orr
Beverly Osband & Eberhard Riedel
Mr. & Mrs. David F. Parker
Kathryn Pearson
Hal Perkins
Steve & Sue Petitpas
Kenny & Donna Pittman

David Preston
Jill Princehouse
Ms. Linda Quan MD
Stacy Quan and Jeff Shaw
Eileen Reichert
Ms. Virginia Reilly
Ms. Rosalind Renouard
Dick & Sue Roberts
Ms. Jean C. Robinson & Mr. Kirk Bradley
James & Elizabeth Roche
Mr. & Mrs. Ronald Rodeheffer
Donald & Jo Anne Rosen
Ms. Carolyn Rowe
Amy Ruf & Greg Vann
Elizabeth Ruf
Dr. John Rusin
Mr. Jim Russell & Ms. Carol Charles
Ben Ryan
Polly Sanford
Augusta Sedoff & Howard Schanzer
Scott Scherer
Betsy & Jason Schneier, MD
Robert & Deborah Schor
David & Barbara Sherer
Svetlana Simova
Donald Skirvin
Griffin Smith & Marissa Sampsel
Mrs. & Mr. Jerry F. Smith
Dr.* & Mrs. George Sofer
Sharon J. Solberg
Mary M Stanton
Derek Storm & Cindy Gossett
Ms. Ethel Story
Ms. Priscilla L. Strand
Holly & John Sullivan
In memory of Nira Sweeney
The Swoggers
Ms. Valerie Ann Taylor

Ms. Tricia Tiano
Vivienne Lee Tooman
S. Elizabeth Treadgold
Ms. Janet Ulman
In honor of Maria Verdes
Susan L. Vestal
Christine & Oscar Vilches
Jennifer Wah
The Warren Family
Jarvis & David Weld
Mr. Hunter Wessells
Ms. Nita Wester
Mark & Signe White
Daniel Wilson & Jacob Mans
Mr. John C. Wilson, Jr.
Judith Wilson
Patricia Wilson
Ms. Dawn Wojciechowski
Linda Whinery Wolf
Jon Woo, M.D.
Ms. Leslie Wright
Yolanka Wulff
Alicia J. Yamamoto & David W. Gray
Ruri Yampolsky
Ms. Peggy Zafarana
In honor of Katerina & Peter Zakonov
Anonymous (48)

